

RFPC-SMA16-FN: SMA Straight Bulkhead Jack With O-ring, PCB Connector, Rated to IP67/68, 3GHz

Material and Plating:

- Insulator A: Teflon
- Insulator B: Teflon
- Body: Brass, Gold Plated
- Pin: Phosphor Bronze, Gold Plated
- Gasket: Silicon, Color: Red
- O-Ring: Silicone, Color: Red

Washer: Brass, Gold Plated

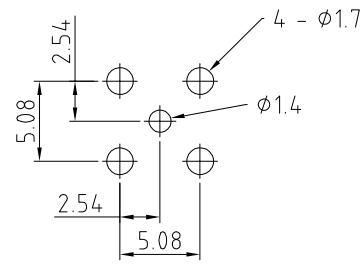
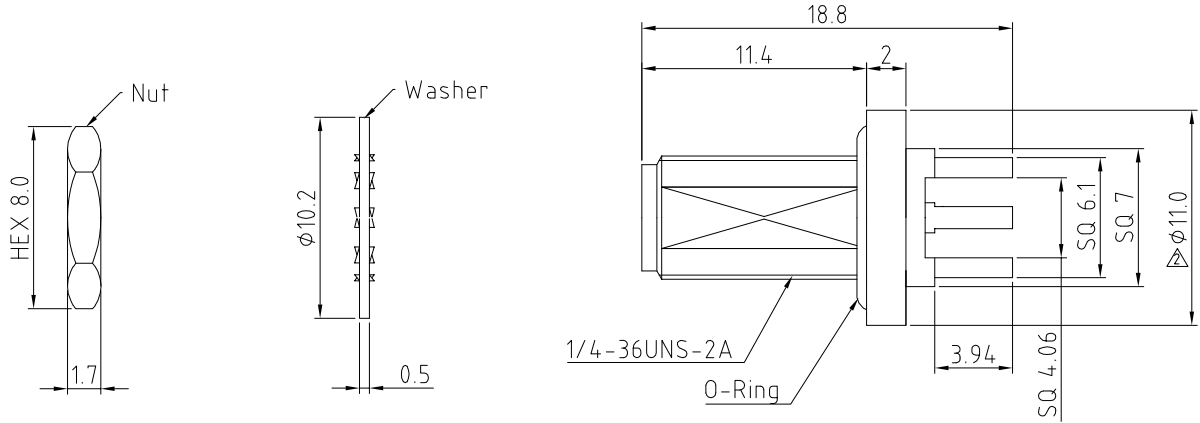
Nut: Brass, Gold Plated

Environmental:

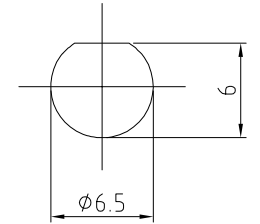
- A. Tested to:
 - i. IP6x - Dust tight - no particle ingress.
 - ii. IPx7 Waterproof for 30 minutes up to 1 meter underwater.
 - iii. IPx8 Waterproof for 48 hours at 1 meter underwater.

Notes:

- Packaging Type: Tray.
- Working Frequency Range: DC-3GHz.
- Operating Temperature: -55°C~+155°C
- The waterproof sealing function will work once the sealing o-ring is completely pressed and fitted to the device's panel.



Recommended PCB Hole Layout



Recommended Mounting Hole

HOW TO ORDER
RFPC - SMA16 - FN - X

WASHER AND NUT OPTIONS:
BLANK = SEPARATELY PACKED (STANDARD)
A = ALL ASSEMBLED WITH CONNECTOR

| | |
|-----------------|--|
| REV. DATE & DRN | 11 30/07/18 - NYW RELEASE |
| | 12 27/12/18 - NYW AMEND PIN MATERIAL |
| | 12 27/12/18 - NYW AMEND DIMENSION |
| | 13 18/02/19 - NYW ADD WASHER & NUT OPTIONS |
| | 14 ADD OPERATING TEMP. |
| | 15 25/02/22 - NYW ADD SQ TO DIMENSIONS |
| | ADD NOTE 4. |

| | | | |
|-------------------|-------------------------|-----------------------------|--------------------------------|
| Scale: NTS | THIRD ANGLE | Unstated: X, XX, XXX ANGLES | Tolerances: N/A, N/A, N/A, N/A |
| Drawn: NYW | | | |
| App'd: XXX | Title SMA PCB Connector | | |
| Date: 25 FEB. '22 | Revision: 1.5 | Unit: mm | |

| | | |
|--|------------------|---------------------|
| | | Type: RFPC-SMA16-FN |
| IP67/68 Rated Cables | www.gradconn.com | RFPC-SMA16-FN |
| © THIS DRAWING IS CONFIDENTIAL AND MUST NOT BE COPIED OR DISCLOSED WITHOUT WRITTEN CONSENT | | Drawing Number: |
| | | Sheet 1 of 1 |
| | | Drawing © E and O E |