

RFCT-SMA122-F37: SMA STRAIGHT BULKHEAD JACK WITH O-RING RATED TO IP68/69K, FOR Ø1.37MM CABLE, WITH SUS316 STAINLESS STEEL BODY, 6GHz

Material and Plating:

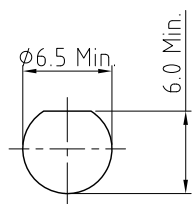
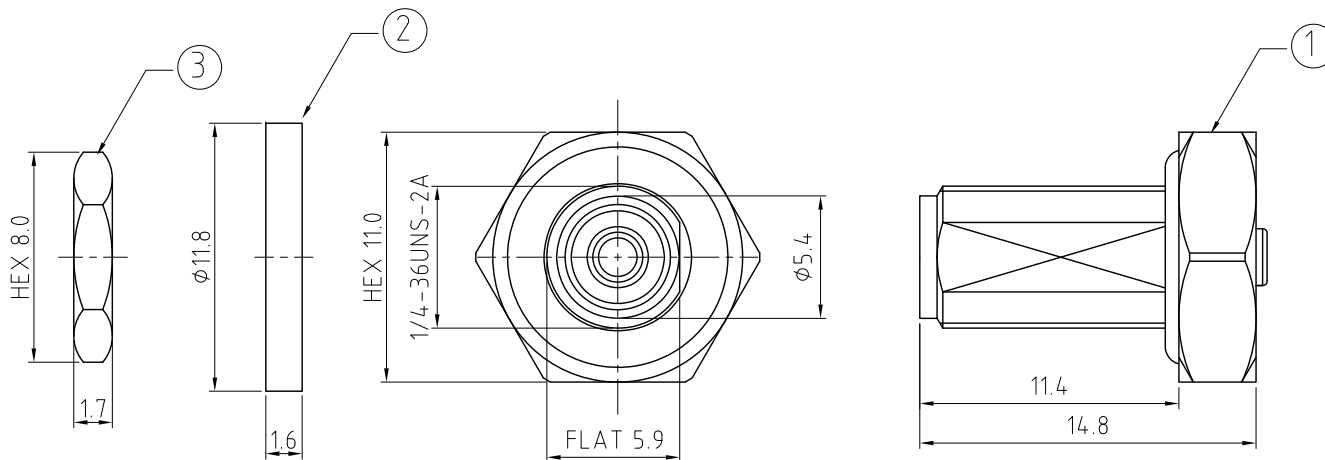
- 1. Barrel: Brass, Gold Plated.
Sleeve: Brass, Gold Plated.
Gasket: Silicone Rubber, Color: Red.
Pin: Brass, Gold Plated.
Pin A: Phosphor Bronze, Gold Plated.
Insulator: Teflon.
Body: SUS316, Passivated.
O-ring: See P/N for detail.
- 2. Washer: SUS316.
- 3. Nut: SUS316, Passivated.

Environmental:

- A. Tested to:
 - i. IP6x - Dust tight - no particle ingress.
 - ii. IPx8 Waterproof for 48 hours at 1 meter underwater.
 - iii. IPx9K Water spray, 14-16L per minute, at 8,000 ~ 10,000 kPa, at 100-150mm distance for 30 seconds.

Notes:

- 1. Please use the recommended torque forces for stainless connectors. This is published on Gradconn.com resources page.



RECOMMENDED SMA MOUNTING HOLE
MAX. PANEL THICKNESS: 2.2MM

HOW TO ORDER
RFCT-SMA122-F37 - X

O-RING MATERIAL:
BLANK = SILICONE RUBBER, COLOR: RED
1 = EPDM, COLOR: BLACK (STANDARD)

| | | |
|-------------------|-------------------------|----------------------|
| Scale: NTS | THIRD ANGLE | Unstated Tolerances: |
| Drawn: CC | | .X ±0.2 |
| App'd: XXX | Title SMA BULKHEAD JACK | .XX ±0.2 |
| Date: 04 JUN. '24 | Revision: 1.1 | .XXX ±0.2 |
| | Unit: mm | ANGLES N/A |

IP Rated RF Products

www.gradconn.com

| |
|-----------------------|
| Type: RFCT-SMA122-F37 |
| RFCT-SMA122-F37 |
| Drawing Number: |
| Sheet 1 of 1 |
| Drawing © E and O E |