

CH03-BC - SIM CARD HOLDER 6 OR 8 PINS, SLIDE IN TYPE

FEATURES

1. GENERAL CHARACTERISTICS
 DIMENSIONS: 25.50L x 17.20W x 2.50H mm
 WEIGHT: APPROX. 0.08g
 CONTACT PRINCIPLE: FRICTION TECHNOLOGY
 OPERATING POSITION: SHAFT UP / DOWN / HORIZONTAL
 MOUNTING SYSTEM: SMT TYPE (POST OPTIONAL)
 DURABILITY: 10,000 CYCLES MIN.

2. MECHANICAL CHARACTERISTICS
 INSULATION MATERIAL: THERMOPLASTIC, UL 94V-0

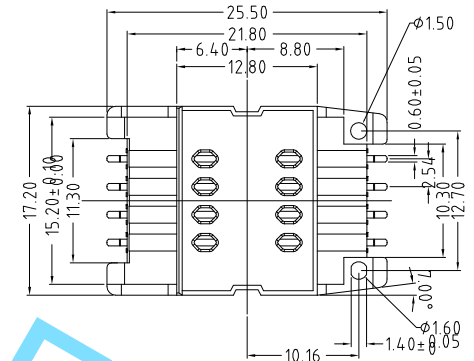
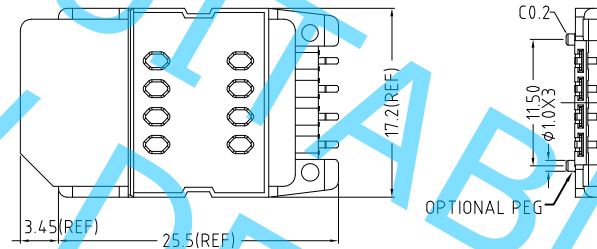
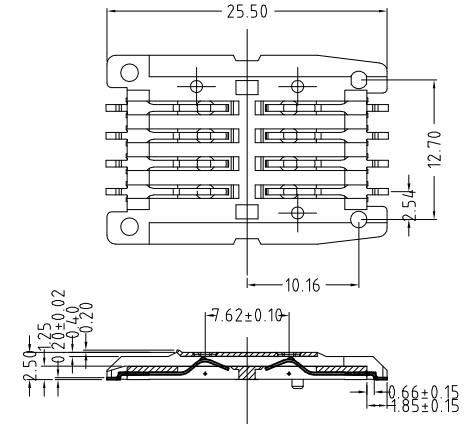
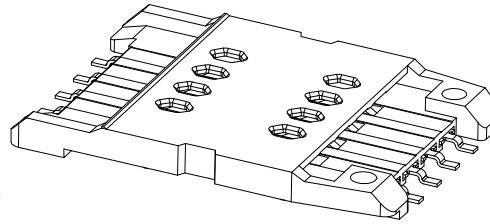
3. ELECTRICAL CHARACTERISTICS
 NUMBER OF CONTACTS (OPTIONAL): 6, 8 PINS
 CONTACT RESISTANCE: 50M OHMS TYP. 100M OHMS MAX.
 INSULATION RESISTANCE: > 1000M OHMS / 500V DC

4. SOLDERABILITY
 WAVE: NOT APPLICABLE
 IR REFLOW: 260°C, 10 SEC. MAX. \triangle
 MANUAL SOLDERING: 360°C, 3 SEC. MAX.

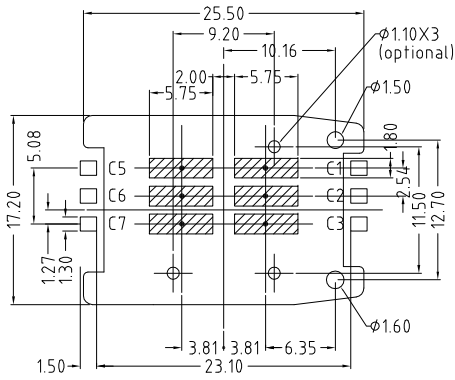
5. ENVIRONMENTAL CHARACTERISTICS
 OPERATING TEMPERATURE: -40°C ~ +85°C
 OPERATING HUMIDITY: 10% ~ 95% RH
 STORAGE TEMPERATURE: -40°C ~ +85°C
 STORAGE HUMIDITY: 10% ~ 95% RH
 THERMAL SHOCK -40°C ~ +85°C, 5 CYCLES
 DAMP HEAT: 40°C, 90% RH, 500 HR
 SALT MIST: 35°C, 5%, NaCl, 48 HR

NOTES:

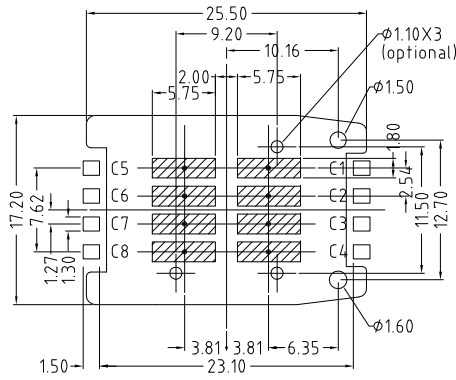
1. ACCEPTABLE SIM CARD SIZE SHOULD MEET GSM 11.11 SPECIFICATION REQUIREMENT. \triangle



UNIT:MM
 TOLERANCES:±0.10



6 PINS VERSION



RECOMMENDED PCB LAYOUT \triangle 8 PINS VERSION

HOW TO ORDER



NO. OF CONTACTS
 06 OR 08

WITH OR WITHOUT LOCATING PEG
 A = WITH
 B = WITHOUT

\triangle PACKAGING OPTIONS
 R = REEL
 (600PCS/REEL) \triangle

REV.	DATE & DRN
10	23/05/03 - IUR RELEASE
11	16/10/06 - CHC
12	29/05/07 - NYW
13	28/09/07 - NYW
14	21/11/07 - NYW
15	05/12/07 - CHC
16	28/04/09 - PN

11	16/10/06 - CHC
12	29/05/07 - NYW
13	28/09/07 - NYW
14	21/11/07 - NYW
15	05/12/07 - CHC
16	28/04/09 - PN

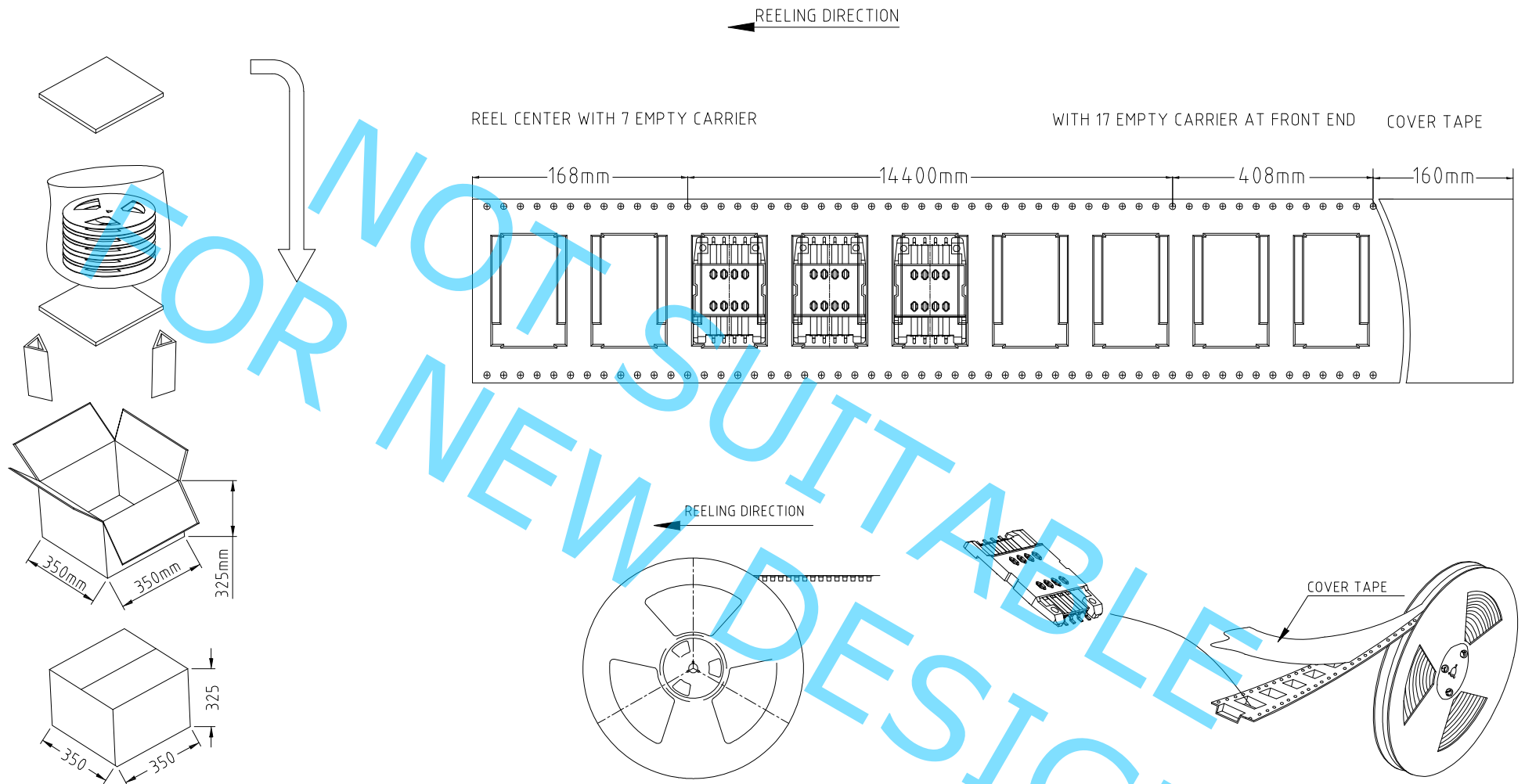
Scale:	2:1
Drawn:	NYW
App'd:	XXXX
Date:	28 APR '09

THIRD ANGLE	
Title	SIM CARD ACCEPTOR
Revision:	1.6

Unstated Tolerances:	0 Dec Places 1 Dec Places 2 Dec Places 3 Dec Places
Material	SEE NOTE
	NOT TO SCALE
Unit:	mm

Type:	CH03-BC
	CH03-BC
Drawing Number:	
Sheet 1	of 2
Drawing C	E and O E

CH03-BC - SIM CARD HOLDER 6 OR 8 PINS, SLIDE IN TYPE - PACKAGING DRAWING



- NOTES:
1. REEL DIA.: 33CM.
 2. 600PCS PER REEL, GROSS WEIGHT: 1.03KG.
 3. 6 REELS PER FULL CARTON, GROSS WEIGHT: 7.38KG.

REV. DATE & DRN
10 28/04/09 - PN
PACKAGING DRAWING ADDED

Scale: NTS	THIRD ANGLE	Unstated Tolerances: 0 Dec Places 1 Dec Places 2 Dec Places 3 Dec Places	Material SEE NOTE
Drawn: PN			
App'd: XXXX	Title: SIM CARD ACCEPTOR		NOT TO SCALE
Date: 28 APR '09	Revision: 1.0		Unit: mm

www.gradconn.com

THIS DRAWING IS CONFIDENTIAL AND MUST NOT BE COPIED OR DISCLOSED WITHOUT WRITTEN CONSENT

Type: CH03-BC
CH03-BC
Drawing Number:
Sheet 2 of 2
Drawing C and O E