

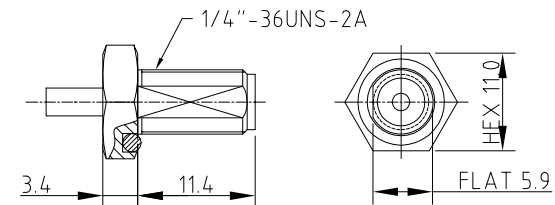
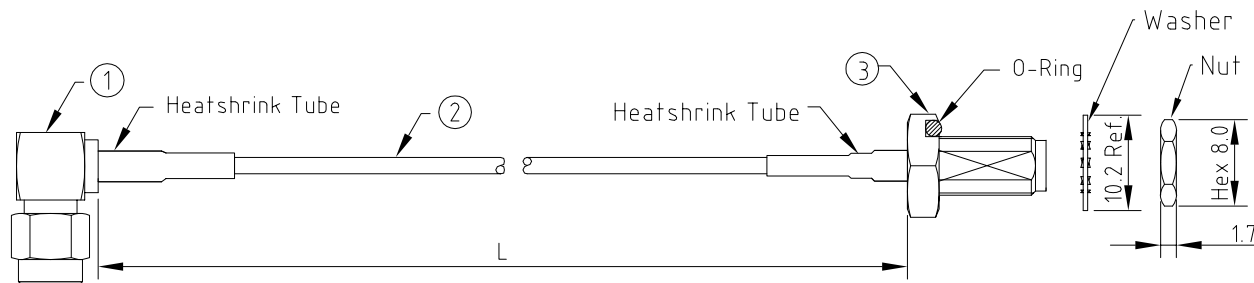
CAB629RF: SMA RIGHT ANGLE PLUG + SMA STRAIGHT BULKHEAD JACK WITH O-RING + RG178 CABLE, 6GHz

SPECIFICATIONS :

1. SMA RIGHT ANGLE PLUG, GOLD PLATED. P/N: RFCT-SMA025-M78.
2. RG178 COAXIAL CABLE, COLOR: BROWN.
3. SMA STRAIGHT BULKHEAD JACK WITH O-RING, P/N: RFCT-SMA032-F78.

NOTES:

1. THE ORIENTATION OF CONNECTORS ON DRAWING IS FOR REFERENCE ONLY, IF THE ORDER IS LEFT BLANK THE CONNECTOR WILL NOT HAVE FIXED ORIENTATION.
2. FIXED ORIENTATION IS SUGGESTED FOR CABLE LENGTH 50MM TO 100MM. PLEASE SPECIFY THE FIXED ORIENTATIONS FROM THE ORDER CODE (F1, F2, ETC)
3. CONTACT GRAD CONN IF THE ORIENTATION YOU REQUIRE IS NOT SHOWN.
4. WORKING FREQUENCY RANGE: DC-6GHz.
5. OPERATING TEMPERATURE: -40°C TO +125°C.
6. IMPEDANCE: 50 OHM.



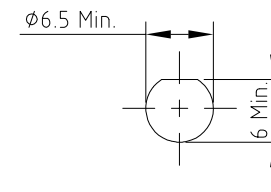
SMA JACK DETAIL DRAWING

HOW TO ORDER
CAB629RF - X X X X - X X - X - 1

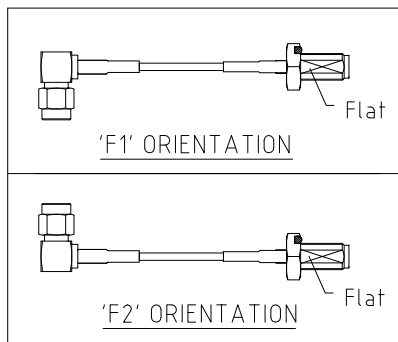
"L" LENGTH IN MM:
eg: 100MM = 0100
(MIN. 0050-MAX.2000
STANDARD = 0100, 0150, 0200)
Tolerance: 50mm: ±2mm.
51-200mm: ±5mm.
201-500mm: ±7mm.
501-999mm: ±10mm.
≥100mm: ± (Lx0.02)mm.

WASHER AND NUT OPTIONS:
BLANK = SEPARATELY PACKED (STANDARD)
A = ALL ASSEMBLED WITH CONNECTOR

ORIENTATION OPTIONS:
BLANK = DOES NOT HAVE A FIXED ORIENTATION
F1 = SMA PLUG CONNECTION DOWN (L=50-200MM)
F2 = SMA PLUG CONNECTION UP (L=50-200MM)
(SEE NOTES 1, 2, 3 AND DIAGRAMS FOR MORE INFORMATION)



RECOMMENDED SMA MOUNTING HOLE



REV. DATE & DRN TO 29/01/24 - NYW RELEASE

Scale: NTS	THIRD ANGLE	Unstated Tolerances: .X ±0.2 .XX ±0.2 .XXX ±0.2 ANGLES N/A	Material SEE NOTE	 www.gradconn.com	Drawing Number: CAB629RF
Drawn: NYW			NOT TO SCALE		Sheet 1 of 1
App'd: XXX	Title CABLE ASSEMBLY		Unit: mm		Drawing © E and O E
Date: 29 JAN. '24	Revision: 1.0				

THIS DRAWING IS CONFIDENTIAL AND MUST NOT BE COPIED OR DISCLOSED WITHOUT WRITTEN CONSENT