

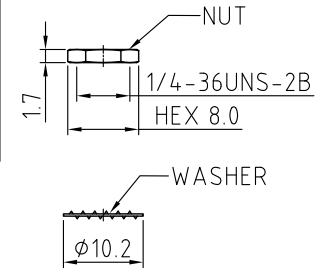
CAB536RF: RF CABLE ASSEMBLY, I-PEX MHF PLUG + SMA R/A BULKHEAD JACK + MULTIPLE CABLE SIZES, 6GHz

SPECIFICATIONS:

- I-PEX MHF PLUG, P/N:  
FOR  $\phi 1.13\text{MM}$  CABLE: 20278-112R-13.  
FOR  $\phi 1.32\text{MM}$  CABLE: 20278-112R-32.
- COAXIAL CABLE, SEE P/N OPTIONS FOR DETAIL.
- SMA RIGHT ANGLE BULKHEAD JACK, P/N:  
FOR  $\phi 1.13\text{MM}$  CABLE: RFCT-SMA006-F13.  
FOR  $\phi 1.32\text{MM}$  CABLE: RFCT-SMA006-F32.

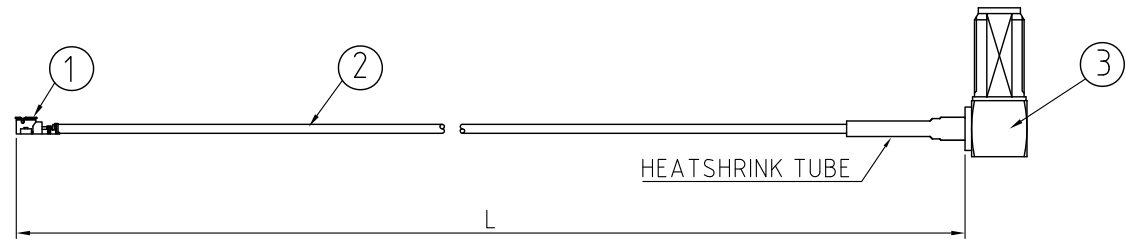
USAGE PRECAUTIONS: CABLES USING 'MICRO' COAX ARE DELICATE:

- HANDLE WITH CARE.
- DO NOT TWIST; APPLY EXCESSIVE FORCES OR SHARP BENDS TO THE CABLE. DO NOT FORCEFULLY DEFORM WIRES.
- CONSULT CONNECTOR MANUFACTURER'S DATASHEETS FOR DETAILED NOTES ON HANDLING INSTRUCTIONS.



NOTES:

- THE ORIENTATION OF CONNECTORS ON DRAWING IS FOR REFERENCE ONLY, IF THE ORDER IS LEFT BLANK THE CONNECTOR WILL NOT HAVE FIXED ORIENTATION.
- FIXED ORIENTATION IS POSSIBLE FOR CABLE LENGTH 25MM TO 220MM. PLEASE SPECIFY THE FIXED ORIENTATIONS FROM THE ORDER CODE (F1, F2, ETC)
- CONTACT GRAD CONN IF THE ORIENTATION YOU REQUIRE IS NOT SHOWN.
- WORKING FREQUENCY RANGE: DC - 6GHz.
- OPERATING TEMPERATURE:  $-40^{\circ}\text{C}$  TO  $+85^{\circ}\text{C}$
- IMPEDANCE: 50 OHM.



HOW TO ORDER

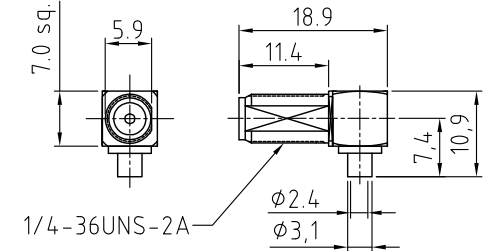
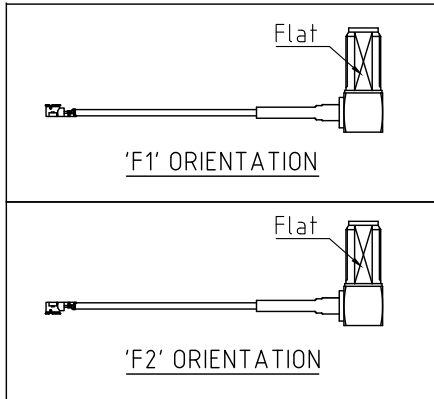
CAB536RF - XXXX - XX - X - X

"L" LENGTH IN MM  
eg: 100MM = 0100  
(MIN. 0025-MAX.0400)  
STANDARD = 0100, 0150, 0200  
Tolerance: 50mm :  $\pm 2\text{mm}$ .  
51-200mm :  $\pm 5\text{mm}$ .  
201-400mm :  $\pm 7\text{mm}$ .

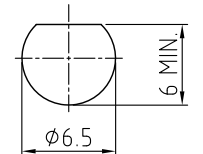
CABLE SIZE OPTIONS:  
1 =  $\phi 1.13\text{MM}$  CABLE, COLOR: GRAY  
2 =  $\phi 1.32\text{MM}$  CABLE, COLOR: GRAY

WASHER AND NUT OPTIONS:  
BLANK = SEPERATELY PACKED (STANDARD)  
A = ASSEMBLED WITH CONNECTOR

ORIENTATION OPTIONS:  
BLANK = DOES NOT HAVE A FIXED ORIENTATION  
F1 = MHF CONNECTION UP (L=50-200MM)  
F2 = MHF CONNECTION DOWN (L=50-200MM)  
(SEE NOTES 1, 2, 3 AND DIAGRAMS FOR MORE INFORMATION)



SMA JACK DETAIL DIMENSION



RECOMMENDED SMA MOUNTING HOLE

REV. DATE & DRN	10 29/11/22 - CC RELEASE
	11 08/11/23 - NYW ADD CABLE OPTION 2
	12 30/01/24 - CC EXCHANGE WASHER AND NUT POSITIONS

Scale: NTS	THIRD ANGLE	Unstated Tolerances: .X $\pm 0.2$ .XX $\pm 0.2$ .XXX $\pm 0.2$ ANGLES $\pm 5$	Material SEE NOTE
Drawn: CC			
App'd: XXX	Title CABLE ASSEMBLY		NOT TO SCALE
Date: 30 JAN. '24	Revision: 1.2		Unit: mm

www.gradconn.com

© THIS DRAWING IS CONFIDENTIAL AND MUST NOT BE COPIED OR DISCLOSED WITHOUT WRITTEN CONSENT

Drawing Number: CAB536RF	
Sheet 1	of 1
Drawing ©	E and O E