



CAB488RF: STAINLESS STEEL SMA STRAIGHT BULKHEAD JACK W/O-RING RATED TO IP68/69K + RG178 CABLE + STRIP/TIN

SPECIFICATIONS :

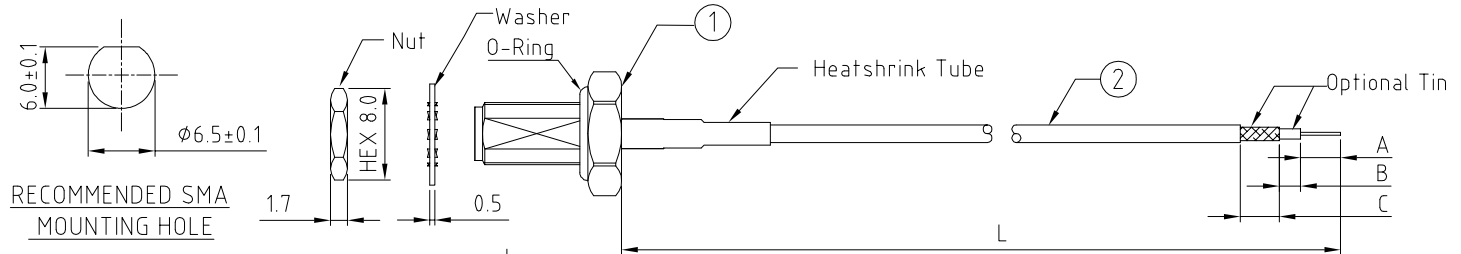
- SMA STRAIGHT BULKHEAD JACK W/O-RING, W/SUS303 STAINLESS STEEL BODY, TESTED TO IP68/69K, P/N: RFCT-SMA061-F78 (W/SILICONE O-RING), RFCT-SMA061-F78-1 (W/EPDM O-RING)
- RG178 CABLE, COLOR: BROWN.
- TWISTED BRAID OR FLEXIBLE COPPER WIRE, LENGTH = A (CENTRE CONDUCTOR) + B (INSULATOR). MINIMUM = 6.0MM. LENGTH 6.0MM - 9.9MM: TWISTED BRAID. LENGTH +10MM: FLEXIBLE COPPER WIRE.

ENVIRONMENTAL:

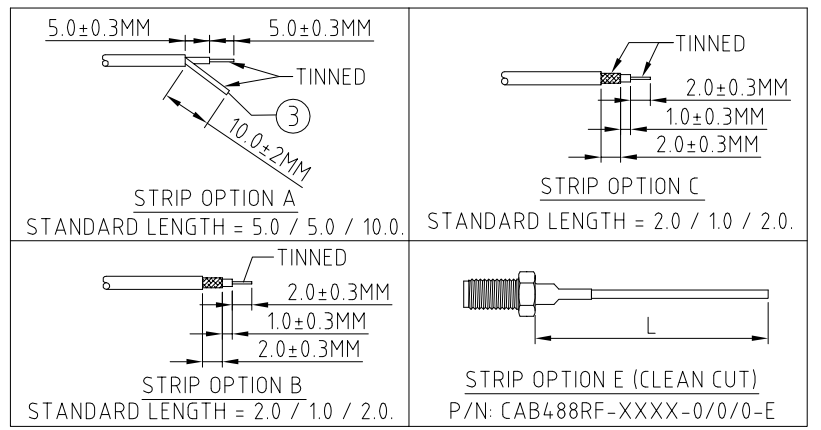
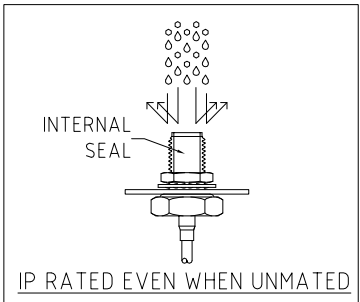
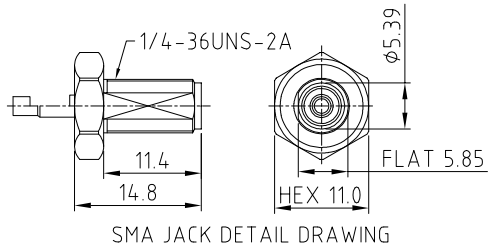
- A. BULKHEAD MOUNTED CONNECTOR (RFCT-SMA061-F78) TESTED TO THE FOLLOWING SPECIFICATION:
- IP6X - DUST TIGHT - NO PARTICLE INGRESS.
  - IPX8 WATERPROOF FOR 48 HOURS AT 1 METER UNDERWATER.
  - IPX9K WATER SPRAY, 14-16L PER MINUTE, AT 8,000-10,000 KPA, AT 100-150MM DISTANCE FOR 30 SECONDS.

NOTES:

- STRIP DIMENSION A / B / C STANDS FOR  
A = CENTRE CONDUCTOR  
B = INSULATOR  
C = BRAID.
- INSERTION LOSS TEST REPORT IS NOT AVAILABLE.
- THIS IS OUR STANDARD OFFERING, SPECIAL DESIGNS ARE AVAILABLE, INCLUDING CUSTOM TOLERANCES AND SPECIAL BRAID TINNING DESIGNS. PLEASE CONTACT GRADCONN FOR MORE INFORMATION.
- CENTRE CONDUCTOR AND TWISTED BRAID OF COAX CABLE IS TINNED. WHEN BRAID LENGTH EXCEEDS 10MM LENGTH OF TINNED COPPER WIRE IS SOLDERED TO THE BRAID/SHIELD OF THE COAX CABLE WHICH ALLOWS SOLDERING TO PCB.
- OPERATING TEMPERATURE: -40°C TO +125°C
- IMPEDANCE: 50 OHM
- IF THE CONNECTOR IS USED IN A CORROSIVE ENVIRONMENT, WE RECOMMEND THE CONNECTOR FACE IS PROTECTED WITH A STAINLESS SEEL DUST CAP.
- PLEASE USE THE RECOMMENDED TORQUE FORCES FOR STAINLESS STEEL CONNECTORS. THIS IS PUBLISHED ON GRADCONN.COM RESOURCES PAGE.



RECOMMENDED SMA MOUNTING HOLE



HOW TO ORDER

CAB488RF - X X X X - X.X / X.X / X.X - X - X - X O-RING OPTIONS:  
 E = EPDM, BLACK (STANDARD)  
 S = SILICONE, RED

WASHER AND NUT OPTIONS:  
 BLANK = SEPERATELY PACKED (STANDARD)  
 A = ASSEMBLED WITH CONNECTOR

STRIP AND TIN OPTIONS:  
 A = CENTER CONDUCTOR & TWISTED BRAID/SOLDERED COPPER WIRE TINNED (SEE NOTE 4 FOR SOLDER TO PCB APPLICATION)  
 B = STRIPPED, END A TINNED  
 C = STRIPPED, END A & C TINNED  
 E = CLEAN CUT

"L" LENGTH IN MM  
 eg: 100MM = 0100  
 (MIN. = 0050, MAX. = 2000  
 STANDARD = 0100, 0150, 0200)  
 Tolerance: <50mm : ±2mm.  
 51-200mm: ±5mm.  
 201-500mm: ±7mm.  
 >501mm: ±10mm.

A/B/C STRIP DIMENSION IN MM  
 FOR STANDARD LENGTH PLEASE REFER TO DRAWINGS.  
 (SPECIALS AVAILABLE UPON REQUEST.)

10 01/17/21 - NYW RELEASE
11 21/12/22 - NYW
ADD NOTE 8
12 28/01/24 - CC
ADD IP RATING VIEW
13 15/03/24 - NYW
ADD O-RING OPTIONS.

Scale: NTS	THIRD ANGLE	Unstated .X .XX .XXX ANGLES	Tolerances: N/A N/A N/A N/A
Drawn: CC			
App'd: XXX	Title: CABLE ASSEMBLY		
Date: 15 MAR '24	Revision: 13	Unit: mm	

IP Rated RF Products      www.gradconn.com

Drawing Number: CAB488RF	
Sheet 1	of 1
Drawing (C)	E and O E