

BB02-YM

CUSTOMER PRODUCT SPECIFICATION SHEET



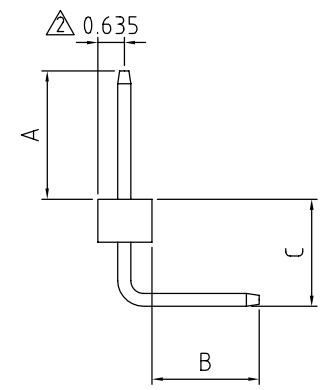
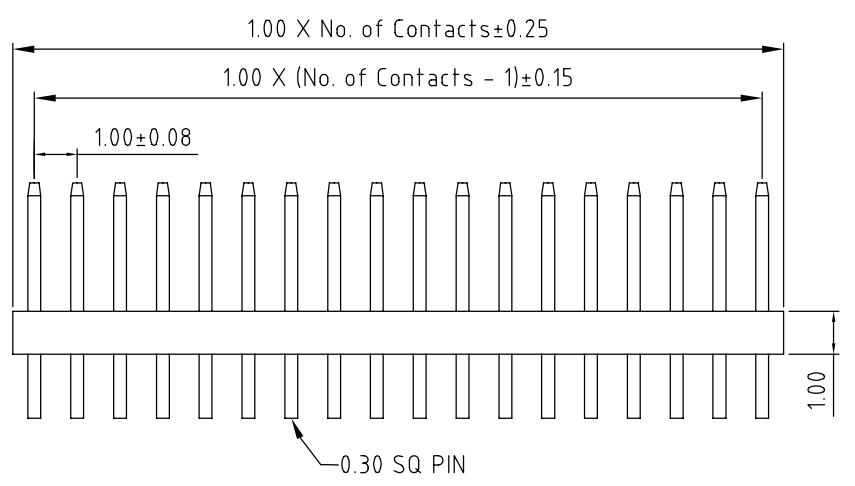
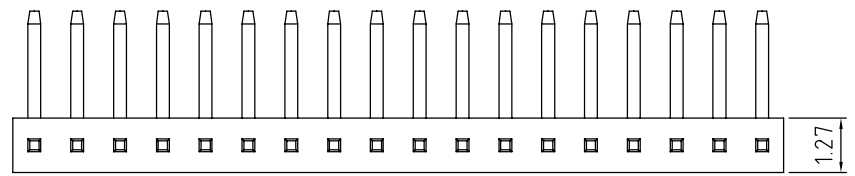
BB02-YM:- 1.00MM (0.039") PIN HEADER, SINGLE ROW, RIGHT ANGLE, THROUGH HOLE TYPE, 04 TO 40 CONTACTS

SPECIFICATIONS

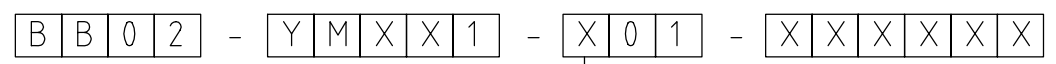
CURRENT RATING: 1AMP
 INSULATOR RESISTANCE: 500 MEGOHMS MIN.
 DIELECTRIC WITHSTANDING: AC 600 V
 CONTACT RESISTANCE: 20m OHMS MAX.
 OPERATING TEMPERATURE: -40°C TO +105°C
 CONTACT MATERIAL: BRASS
 INSULATOR MATERIAL: THERMOPLASTIC, UL 94V-0
 STANDARD: LCP
 PLATING: GOLD FLASH OR TIN OVER 30-50U" NICKEL
 SOLDERABILITY IR REFLOW: 280°C FOR 10 SEC
 WAVE: 250°C FOR 5-10 SEC
 MANUAL SOLDER: 380°C FOR 3-5 SEC

PACKAGING: LOOSE IN BOX.

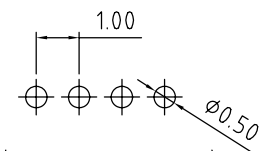
MATES WITH: - BB02-WD
 BB02-WE
 BB02-WF



HOW TO ORDER



<p>NO. OF CONTACTS 04 to 40</p>	<p>CONTACT PLATING OPTIONS K = GOLD FLASH (STANDARD) T = BRIGHT TIN M = MATT TIN</p>	<p>PIN LENGTH A (1/10mm) PLEASE SPECIFY PIN LENGTH REQUIRED I.E. 2.5mm = 25 TOL. ±0.25mm STANDARD = 15</p>	<p>PIN LENGTH B (1/10mm) PLEASE SPECIFY PIN LENGTH REQUIRED I.E. 2.5mm = 25 TOL. ±0.25mm STANDARD = 25</p>	<p>PIN LENGTH C (1/10mm) PLEASE SPECIFY PIN LENGTH REQUIRED I.E. 2.5mm = 25 TOL. ±0.25mm STANDARD = 25</p>
-------------------------------------	--	--	--	--



(TOLERANCE: ±0.05)
RECOMMENDED PCB HOLE LAYOUT

REV. DATE & DRN
 10 20/02/09 - NYW RELEASE
 11 19/06/09 - NYW AMEND STANDARD A = 15.
 12 25/04/11 - NYW ADD PLANAR HEIGHT.

Scale: 8:1	THIRD ANGLE	 Unstated Tolerances: X ± 0.30 .X ± 0.25 .XX ± 0.15 .XXX ± 0.10	Material SEE NOTE
Drawn: NYW	 Title: PIN HEADER		NOT TO SCALE
App'd: XXX	Revision: 1.2	Unit: mm	

www.gradconn.com

THIS DRAWING IS CONFIDENTIAL AND MUST NOT BE COPIED OR DISCLOSED WITHOUT WRITTEN CONSENT

Type BB02-YM
 BB02-YM
 Drawing Number:
 Sheet 1 of 1
 Drawing © E and O E