

RFPC-SMA23-FN-186: SMA Bulkhead Jack With O-ring, Edge Mount Connector W/1.86mm Gap, Rated to IP68/69K, 6GHz

Material and Plating:

- Insulator A: Teflon
- Insulator B: Teflon
- Body: Brass, Gold Plated
- Pin: Phosphor Bronze, Gold Plated
- Gasket A: Silicon, Color: Red
- Gasket B: Silicon, Color: Red
- O-Ring: Silicone, Color: Red
- Barrel: Brass, Gold Plated

Washer: Brass, Gold Plated

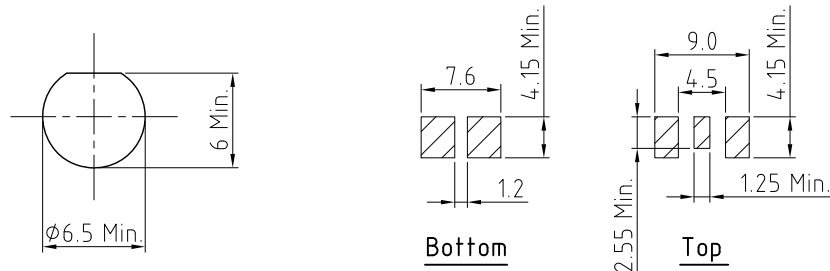
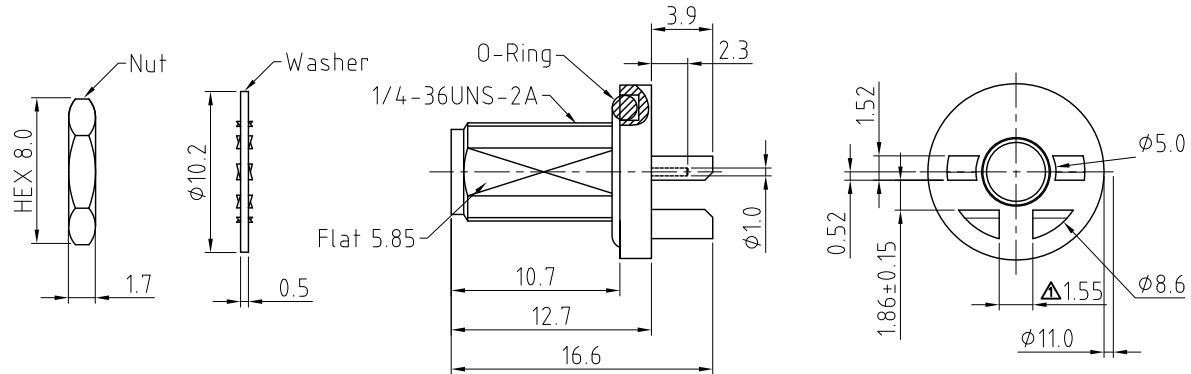
Nut: Brass, Gold Plated

Environmental:

- A. Tested to:
  - i. IP6x - Dust tight - no particle ingress.
  - ii. IPx8 Waterproof for 48 hours at 1 meter underwater.
  - iii. IPx9K Water spray, 14-16L per minute, at 8,000 ~ 10,000 kPa, at 100-150mm distance for 30 seconds.

Notes:

- Working Frequency Range: DC-6GHz.
- Operating Temperature: -65°C to +165°C.
- Impedance: 50 Ohm
- VSWR: 1.5 Max.
- Recommended PCB Thickness: 1.6mm.  
Other PCB thickness available on request



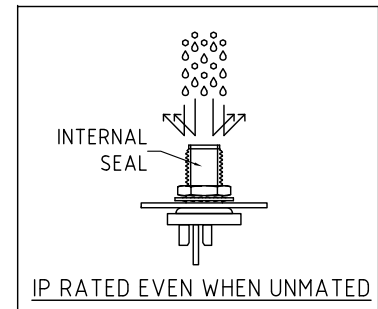
Recommended Mounting Hole

Recommended Foot Print

HOW TO ORDER

RFPC - SMA23 - FN - 186 - X

WASHER AND NUT OPTIONS:  
 BLANK = SEPARATELY PACKED (STANDARD)  
 A = ALL ASSEMBLED WITH CONNECTOR



REV. DATE & DRN	10 23/05/23 - NYW RELEASE
11 26/06/23 - NYW UPDATE IP RATING	
12 08/09/23 - NYW ANTILOD DIMENSION	
13 31/03/24 - CC ADD IP RATING VIEW	
14 12/04/24 - CC ADD NOTE FOR OTHER PCB THICKNESS	

Scale: NTS	THIRD ANGLE	Unstated Tolerances: .X ±0.2 .XX ±0.2 .XXX ±0.2 ANGLES N/A
Drawn: CC		
App'd: XXX	Title SMA PCB Connector	
Date: 12 APR. '24	Revision: 1.4	Unit: mm

		Type: RFPC-SMA23-FN
IP Rated RF Products	www.gradconn.com	RFPC-SMA23-FN-186
© THIS DRAWING IS CONFIDENTIAL AND MUST NOT BE COPIED OR DISCLOSED WITHOUT WRITTEN CONSENT		Drawing Number:
		Sheet 1 of 1
		Drawing © E and O E