

CH03-BH060-B : SIM CARD HOLDER SMT 6 CONTACTS

FEATURES

1. GENERAL CHARACTERISTICS

DIMENSIONS: 29.70L x 17.20W x 2.50H mm  
 OPERATING POSITION: SHAFT UP / DOWN / HORIZONTAL  
 MOUNTING SYSTEM: SMT TYPE  
 DURABILITY: 5,000 CYCLES  
 OPERATION TEMPERATURE: -25°C TO +85°C

2. MECHANICAL CHARACTERISTICS

INSULATION MATERIAL: THERMOPLASTIC, UL 94V-0  
 CONTACT MATERIAL: PHOSPHOR BRONZE  
 CONTACT PLATING: GOLD ON CONTACT AREA, TIN ON SOLDER TAIL

3. ELECTRICAL CHARACTERISTICS

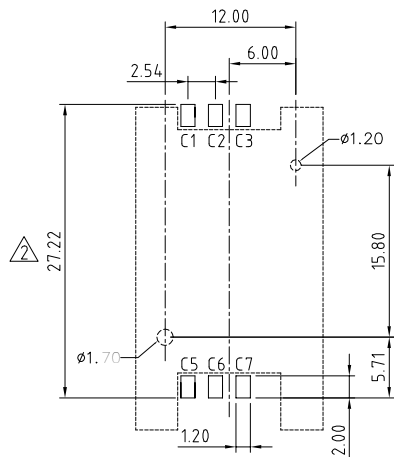
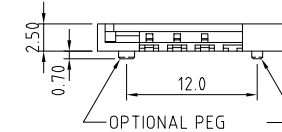
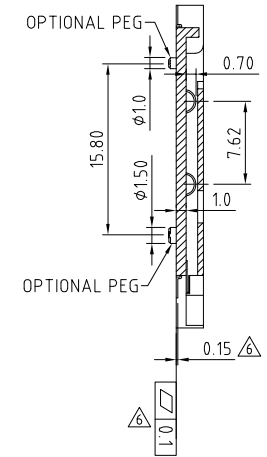
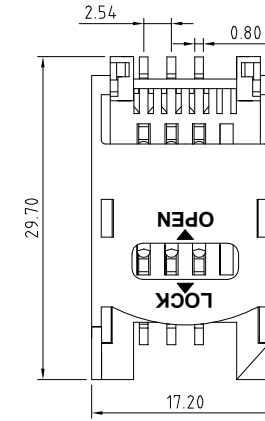
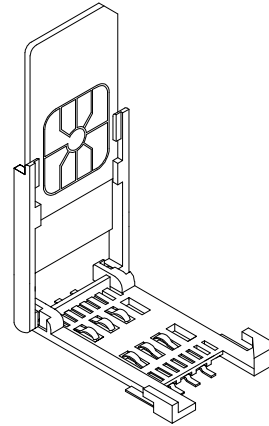
CONTACT RESISTANCE: 30M OHMS MAX.  
 INSULATION RESISTANCE: > 1000M OHMS MIN. / 500V DC  
 RATED CURRENT: 0.5A MAX.  
 RATED VOLTAGE: 30V AC  
 WITHSTANDING DIELECTRIC VOLTAGE: 500V AC R.M.S. FOR 1 MINUTE

4. SOLDERABILITY

MAX. PROCESSING TEMP.: 260°C FOR 10 SEC.

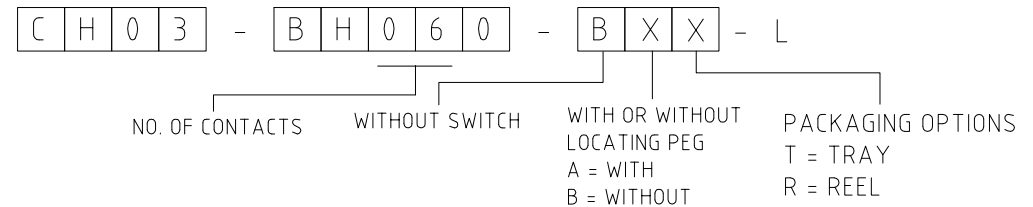
NOTES:

1. ACCEPTABLE SIM CARD SIZE SHOULD MEET GSM 11.11 SPECIFICATION REQUIREMENT.  $\Delta$



RECOMMENDED PCB LAYOUT

HOW TO ORDER



REV.	DATE & DRN
10	03/07/03 - NYW RELEASE
11	12/17/06 - NYW DRAWING MODIFICATION
12	04/02/05 - NYW AMEND LAYOUT DIMENSION
13	27/03/06 - NYW ADD ROHS OPTION
14	16/07/06 - NYW REMOVE NON-ROHS VERSION
15	29/05/07 - NYW ADD ELECTRICAL SPEC.
16	04/06/08 - NYW ADD NOTES 1.
17	28/02/09 - CHC PACKAGING DRAWING ADDED.
18	12/06/23 - NYW ADD DIMENSIONS

Scale: 2:1	THIRD ANGLE	Unstated X, .X, .XX Angle	Tolerances: N/A ±0.38 ±0.25 ±1°	Material SEE NOTE
Drawn: NYW				
App'd: XXXX	Title: SIM CARD ACCEPTOR	NOT TO SCALE		
Date: 12 JUN '23	Revision: 1.8	Unit: mm		

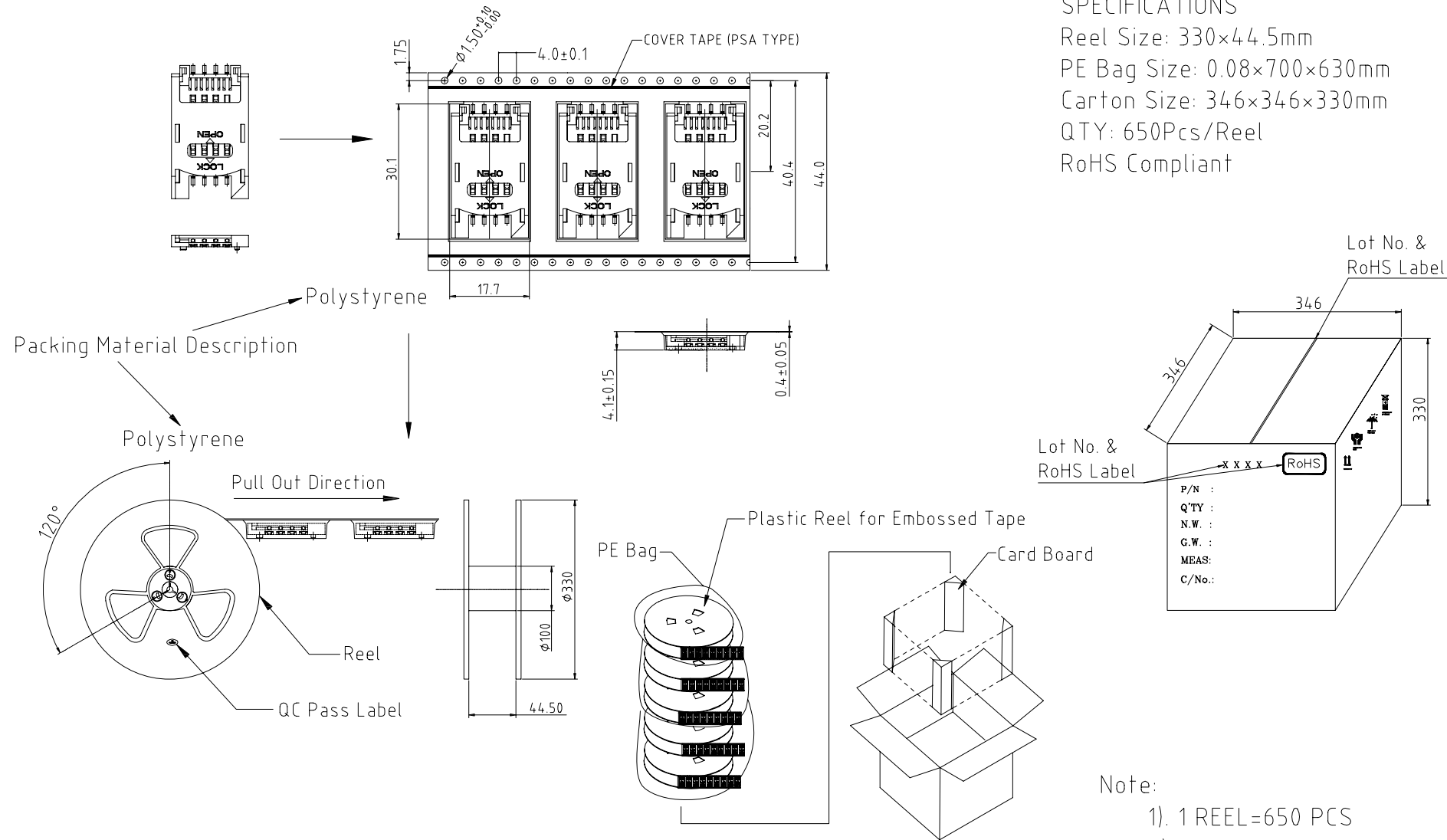
© THIS DRAWING IS CONFIDENTIAL AND MUST NOT BE COPIED OR DISCLOSED WITHOUT WRITTEN CONSENT

Type: CH03-BH
CH03-BH060-B
Drawing Number:
Sheet 1 of 1
Drawing C  E and O E

CH03-BH0X0-XXR-L - REEL PACKAGING DRAWING

SPECIFICATIONS

Reel Size: 330x44.5mm  
 PE Bag Size: 0.08x700x630mm  
 Carton Size: 346x346x330mm  
 QTY: 650Pcs/Reel  
 RoHS Compliant



- Note:
- 1) 1 REEL=650 PCS
  - 2) 1 BOX=6 REEL

REV. DATE & DRN 10 03/02/09 - CHC PACKAGING DRAWING ADDED	Drawn: CHC	THIRD ANGLE	Unstated .X ±0.20 .XX ±0.10	Material SEE NOTE
	App'd: XXX	Title: PACKAGING	ANGLES ±1°	NOT TO SCALE
	Date: 03 FEB '09	Revision: 1.0		Unit: mm

		Material SEE NOTE
Title: PACKAGING		NOT TO SCALE
Date: 03 FEB '09	Revision: 1.0	Unit: mm

www.gradconn.com

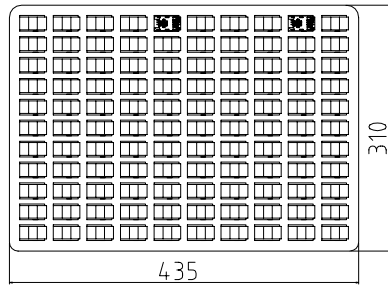
THIS DRAWING IS CONFIDENTIAL AND MUST NOT BE COPIED OR DISCLOSED WITHOUT WRITTEN CONSENT

Type: CH03-BH
CH03-BH0X0-XXR-L
Drawing Number:
Sheet 2 of 3
Drawing © E and O E

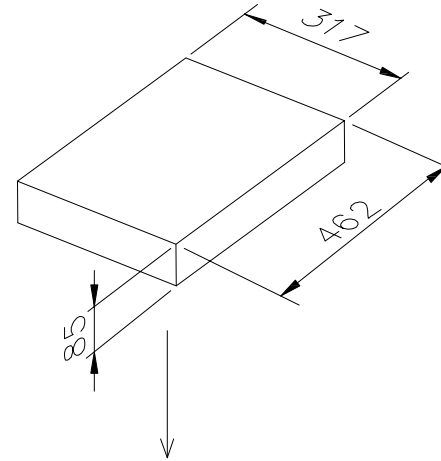
CH03-BH0X0-XXT-L - TRAY PACKAGING DRAWING

PACKING CONDITION

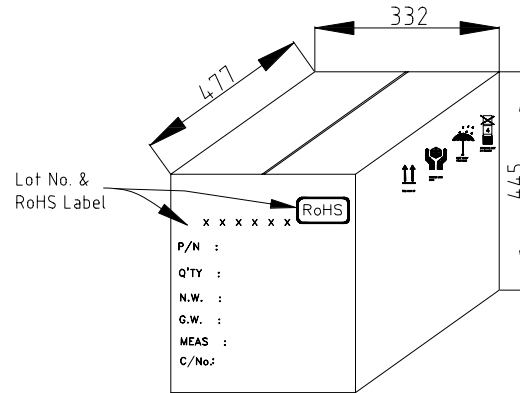
TRAY×10 (110PCS/TRAY)



INNER BOX×5 (1100PCS/BOX)



OUTER BOX×1 (5500PCS)



Q'TY/PCS		
OUTER BOX	INNER BOX	TRAY
5500	1100	110

REV. DATE & DRN  
1.0 03/02/09 - CHC  
PACKAGING DRAWING ADDED

	THIRD ANGLE	Unstated Tolerances: .X ±0.20 .XX ±0.10 ANGLES ±1°	Material SEE NOTE
Drawn: CHC			
App'd: XXX	Title: PACKAGING	NOT TO SCALE	
Date: 03 FEB '09	Revision: 1.0	Unit: mm	

www.gradconn.com

THIS DRAWING IS CONFIDENTIAL AND MUST NOT BE COPIED OR DISCLOSED WITHOUT WRITTEN CONSENT

Type: CH03-BH
CH03-BH0X0-XXT-L
Drawing Number:
Sheet 3 of 3
Drawing © E and O E