

CABLE 372 RF: SMP S/T JACK + FRONT MOUNT SMA STRAIGHT BULKHEAD JACK WITH O-RING RATED TO IP67/68 + Ø1.37MM CABLE

SPECIFICATIONS :

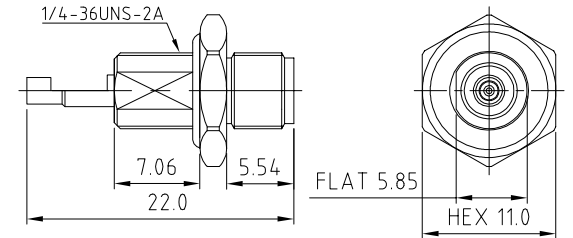
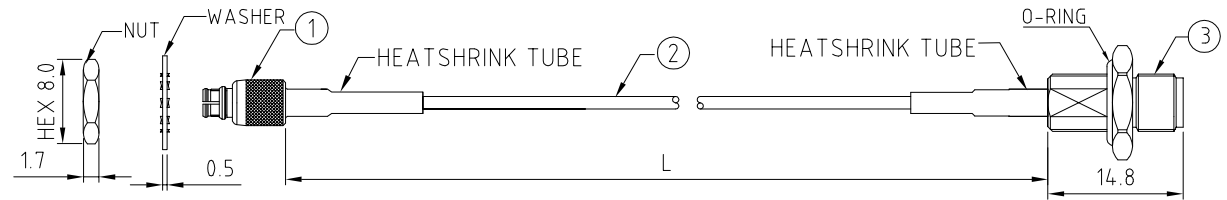
1. SMP STRAIGHT JACK, P/N: RFCT-SMP004-F37.
2. Ø1.37MM COAXIAL CABLE, COLOR: BLACK.
3. FRONT MOUNT SMA STRAIGHT BULKHEAD JACK WITH O-RING RATED TO IP67/68, P/N: RFCT-SMA003-F78.

ENVIRONMENTAL:

- A. BULKHEAD MOUNTED CONNECTOR (RFCT-SMA003-F78) TESTED TO THE FOLLOWING SPECIFICATION:
- i. IP6X - DUST TIGHT - NO PARTICLE INGRESS.
  - ii. IPX7 WATERPROOF FOR 30 MINUTES UP TO 1 METER UNDERWATER.
  - iii. IPX8 WATERPROOF FOR 4.8 HOURS AT 1 METER UNDERWATER.
  - iv. IPX8 WATERPROOF FOR 12 HOURS AT 5 METERS UNDERWATER.
  - v. PRESSURE TEST - 1 BAR FOR 10 SECONDS.

NOTES:

1. WORKING FREQUENCY RANGE: DC- 3GHz
2. OPERATING TEMPERATURE: -40°C TO +125°C
3. IMPEDANCE: 50 OHM.
4. IT IS INTENDED THAT MOUNTING OF THIS CONNECTOR IS ACHIEVED USING THE NUT AND WASHER PROVIDED. PLEASE CONTACT GRADCONN FOR ADVISE IF PLANNING TO USE A DIFFERENT METHOD OF MOUNTING.



SMA DETAIL DRAWING

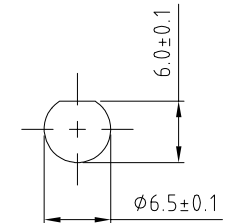
HOW TO ORDER

CABLE 372 RF - X X X X - X - 1

"L" LENGTH IN MM:  
 eg: 100MM = 0100  
 (MIN. 0050-MAX.2000)  
 STANDARD = 0100, 0150, 0200  
 Tolerance: 50mm: ±2mm  
 51-200mm: ±5mm.  
 201-500mm: ±7mm.  
 >500mm: ±10mm.

CABLE SIZE:  
 1 = Ø1.37MM CABLE, COLOR: BLACK

WASHER AND NUT OPTIONS:  
 BLANK = SEPARATELY PACKED (STANDARD)  
 A = ALL ASSEMBLED WITH CONNECTOR



RECOMMENDED SMA MOUNTING HOLE

REV. DATE & DRN	1.0 12/12/19 - NYW RELEASE
	1.1 16/07/20 - NYW ADD NOTE 4.
	1.2 28/12/20 - NYW AMEND OPERATING TEMP.

Scale: NTS	THIRD ANGLE	Unstated: .X N/A	Tolerances: N/A
Drawn: NYW		.XX N/A	.XXX N/A
App'd: XXX	Title: CABLE ASSEMBLY	ANGLES N/A	
Date: 28 DEC. '20	Revision: 12	Unit: mm	

IP67/68 Rated Cables	www.gradconn.com

Type: Cable 372 RF
CABLE 372 RF
Drawing Number:
Sheet 1 of 1
Drawing © E and O E