

CABLE 365 RF: MMCX R/A PLUG + FRONT MOUNT TNC STRAIGHT BULKHEAD JACK WITH O-RING RATED TO IP67/68 + RG178 CABLE

SPECIFICATIONS:

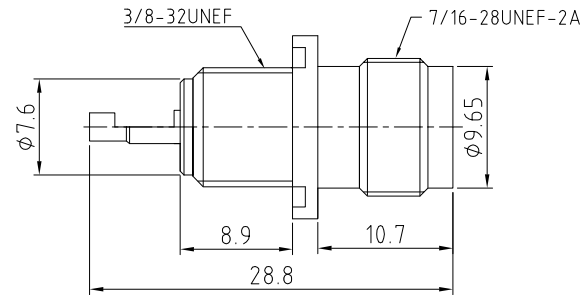
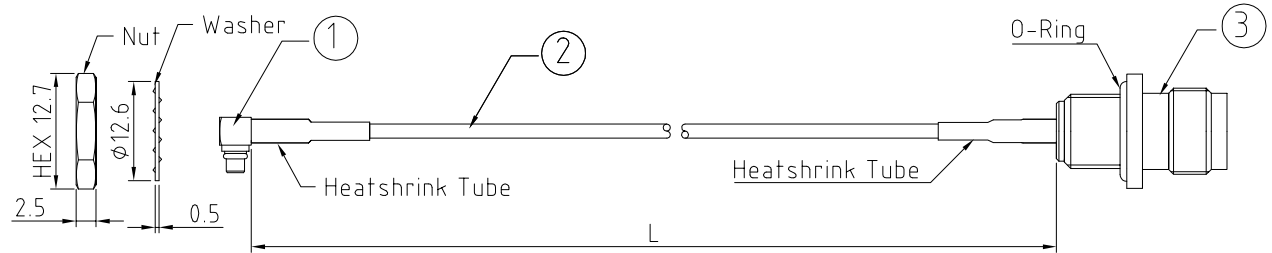
1. MMCX RIGHT ANGLE PLUG, P/N: RFCT-MMCX003-M78.
2. RG178 COAXIAL CABLE, COLOR: BROWN.
3. FRONT MOUNT TNC STRAIGHT BULKHEAD JACK WITH O-RING RATED TO IP67/68, P/N: RFCT-TNC009-F78.

ENVIRONMENTAL:

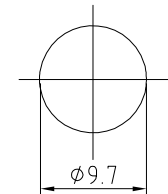
- A. BULKHEAD MOUNTED CONNECTOR (RFCT-TNC009-F78) RATED TO THE FOLLOWING SPECIFICATION:
- i. IP6X - DUST TIGHT - NO PARTICLE INGRESS.
 - ii. IPX7 WATERPROOF FOR 30 MINUTES UP TO 1 METER UNDERWATER.
 - iii. IPX8 WATERPROOF FOR 48 HOURS AT 1 METER UNDERWATER.

NOTES:

1. WORKING FREQUENCY RANGE: DC-3GHz.
2. OPERATING TEMPERATURE: -40°C TO +125°C.
3. IMPEDANCE: 50 OHM.
4. IT IS INTENDED THAT MOUNTING OF THIS CONNECTOR IS ACHIEVED USING THE NUT AND WASHER PROVIDED. PLEASE CONTACT GRADCONN FOR ADVISE IF PLANNING TO USE A DIFFERENT METHOD OF MOUNTING.



TNC DETAIL DRAWING



RECOMMENDED MOUNTING HOLE TOLERANCE: ±0.1

HOW TO ORDER
CABLE 365 RF - X X X X - X - 1

"L" LENGTH IN MM
eg: 100MM = 0100

(MIN. = 0050, MAX. = 2000,
STANDARD = 0100, 0150, 0200)

Tolerance: 50mm: ±2mm.
50-200mm: ±5mm.
201-500mm: ±7mm.
>500mm: ±10mm.

CABLE SIZE OPTIONS:
1 = RG178 CABLE, COLOR: BROWN

WASHER AND NUT OPTIONS:
BLANK = SEPARATELY PACKED (STANDARD)
A = ASSEMBLED WITH CONNECTOR

REV. DATE & DRN
10 22/11/19 - NYW RELEASE
11 16/01/20 - NYW
ADD NOTE 4
12 28/11/20 - NYW
AMEND OPERATING TEMP...

| | | | |
|------------------|----------------------|--------------------------------------|---|
| Scale: NTS | THIRD ANGLE | Unstated X XX XXX ANGLES | Tolerances: N/A N/A N/A N/A |
| Drawn: NYW | | | |
| App'd: XXX | Title CABLE ASSEMBLY | | |
| Date: 28 DEC '20 | Revision: 1.2 | Unit: mm | |

| | | |
|--|----------------------|---------------------|
| IP67/68 Rated Cables | www.gradconn.com | Type: Cable 365 RF |
| | | CABLE 365 RF |
| Drawing Number: | | Sheet 1 of 1 |
| © THIS DRAWING IS CONFIDENTIAL AND MUST NOT BE COPIED OR DISCLOSED WITHOUT WRITTEN CONSENT | | Drawing © E and O E |