

CABLE 332 RF: RF CABLE ASSEMBLY, RP SMA S/T PLUG + RP SMA S/T BULKHEAD JACK WITH O-RING + 0.81MM CABLE - 6GHz

SPECIFICATIONS:

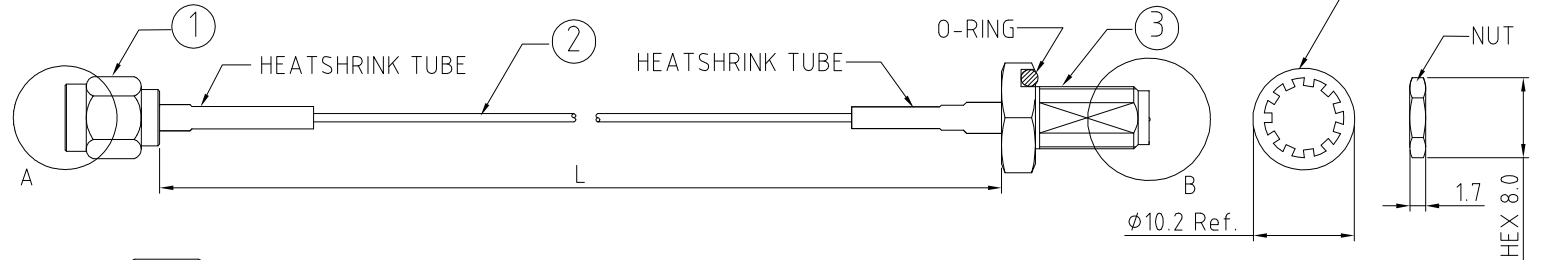
1. RP SMA STRAIGHT PLUG, P/N: RFCT-SMA005-M08.
2. ϕ 0.81MM COAXIAL CABLE, COLOR: GRAY.
3. RP SMA STRAIGHT BULKHEAD JACK WITH O-RING, P/N: RFCT-SMA045-F08.

NOTES:

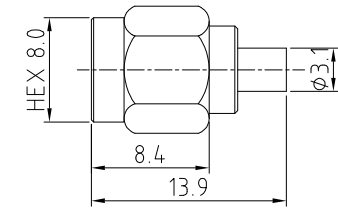
1. WORKING FREQUENCY RANGE: DC-6GHz

USAGE PRECAUTIONS: CABLES USING 'MICRO' COAX ARE DELICATE:

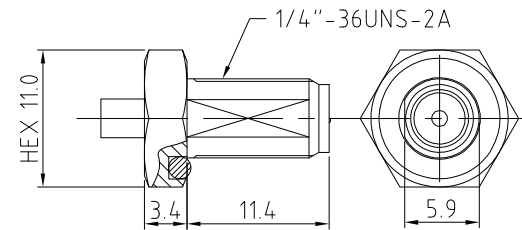
- (i) HANDLE WITH CARE.
- (ii) DO NOT TWIST; APPLY EXCESSIVE FORCES OR SHARP BENDS TO THE CABLE. DO NOT FORCEFULLY DEFORM WIRES.
- (iii) CONSULT CONNECTOR MANUFACTURER'S DATASHEETS FOR DETAILED NOTES ON HANDLING INSTRUCTIONS.



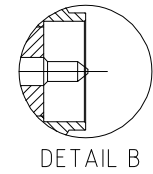
DETAIL A



SMA PLUG DETAIL DIMENSION



SMA JACK DETAIL DIMENSION



DETAIL B

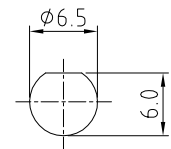
HOW TO ORDER

CABLE 332 RF - X X X X - X - 1

"L" LENGTH IN MM
 eg: 100MM = 0100
 (MIN. 0050-MAX.2000)
 STANDARD = 0100, 0150, 0200
 Tolerance: 50mm : \pm 2mm.
 51-200mm: \pm 5mm.
 201-500mm: \pm 7mm.
 >501mm: \pm 10mm.

CABLE SIZE:
 1 = ϕ 0.81MM CABLE, COLOR: GRAY

WASHER AND NUT OPTIONS:
 BLANK = SEPARATELY PACKED (STANDARD)
 A = ASSEMBLED WITH CONNECTOR



RECOMMENDED SMA MOUNTING HOLE

Scale: NTS	THIRD ANGLE	Unstated .X .XX .XXX ANGLES	Tolerances: N/A N/A N/A N/A	Material SEE NOTE
Drawn: NYW				
App'd: XXX	Title: CABLE ASSEMBLY	NOT TO SCALE		
Date: 12 DEC. '18	Revision: 1.0	Unit: mm		



www.gradconn.com

THIS DRAWING IS CONFIDENTIAL AND MUST NOT BE COPIED OR DISCLOSED WITHOUT WRITTEN CONSENT

Type: Cable 332 RF
CABLE 332 RF
Drawing Number:
Sheet 1 of 1
Drawing © E and O E