

CABLE 322 RF: RF CABLE ASSEMBLY, MURATA HSC PLUG + SMA STRAIGHT JACK + 0.81MM CABLE

SPECIFICATIONS:

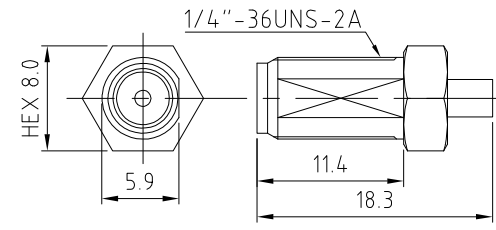
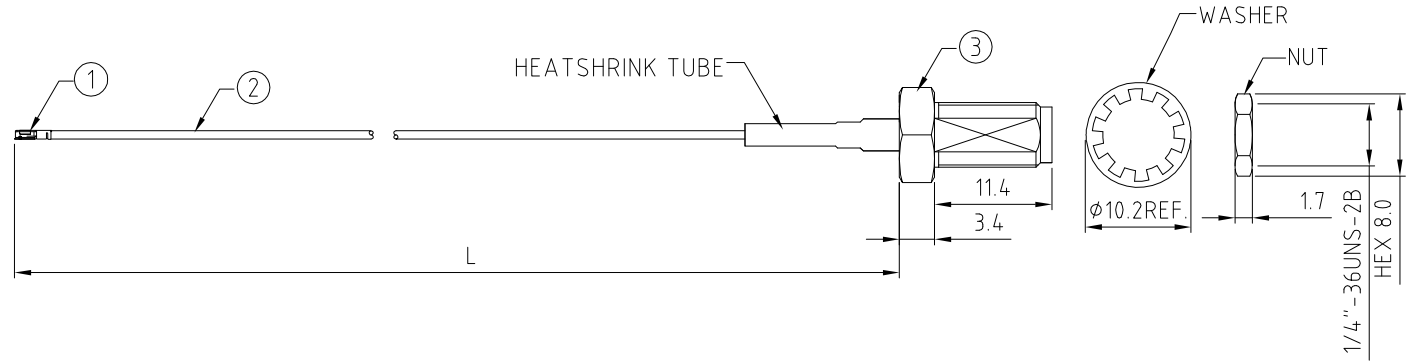
1. MURATA HSC R/A PLUG, P/N: MXHP32
2. 0.81MM COAXIAL CABLE, COLOR: WHITE
3. SMA STRAIGHT BULKHEAD JACK ,GOLD
P/N: RFCT-SMA049-F08

NOTES:

1. THE ORIENTATION OF CONNECTORS ON DRAWING IS FOR REFERENCE ONLY, IF THE ORDER IS LEFT BLANK THE CONNECTOR WILL NOT HAVE FIXED ORIENTATION.
2. FIXED ORIENTATION IS SUGGESTED FOR CABLE LENGTH 25MM TO 100MM. PLEASE SPECIFY THE FIXED ORIENTATIONS FROM THE ORDER CODE (F1, F2, ETC)
3. CONTACT GRADCONN IF THE ORIENTATION YOU REQUIRE IS NOT SHOWN.
4. WORKING FREQUENCY RANGE: DC-6GHz.

USAGE PRECAUTIONS: CABLES USING 'MICRO' COAX ARE DELICATE:

- (i) HANDLE WITH CARE.
- (ii) DO NOT TWIST; APPLY EXCESSIVE FORCES OR SHARP BENDS TO THE CABLE. DO NOT FORCEFULLY DEFORM WIRES.
- (iii) CONSULT CONNECTOR MANUFACTURER'S DATASHEETS FOR DETAILED NOTES ON HANDLING INSTRUCTIONS.

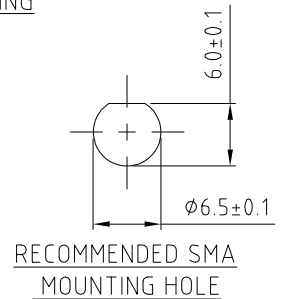
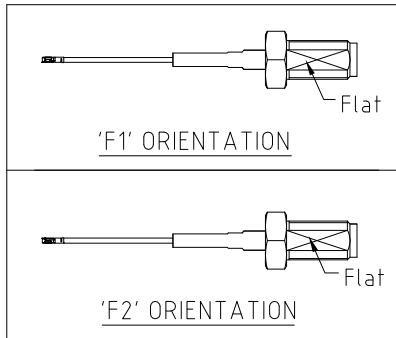


HOW TO ORDER
CABLE 322 RF - X X X - X X - X

"L" LENGTH IN MM:
eg: 100MM = 100
(MIN. 025-MAX.400)
STANDARD = 100, 150, 200)
Tolerance: 50-200mm: ± 5 mm.
201-400mm: ± 7 mm.

WASHER AND NUT OPTIONS:
BLANK = SEPARATELY PACKED (STANDARD)
A = ASSEMBLED WITH CONNECTOR

ORIENTATION OPTIONS:
BLANK = DOES NOT HAVE A FIXED ORIENTATION
F1 = HSC CONNECTION DOWN (L=25-200MM)
F2 = HSC CONNECTION UP (L=25-200MM)
(SEE NOTES 1, 2, 3 AND DIAGRAMS FOR MORE INFORMATION)



REV. DATE & DRN
11 06/09/18 - NYW RELEASE
DRAWING AMENDMENT.

Scale: NTS	THIRD ANGLE	Unstated .X .XX .XXX ANGLES	Tolerances: N/A N/A N/A	Material SEE NOTE
Drawn: CC				NOT TO SCALE
App'd: XXX	Title: CABLE ASSEMBLY			Unit: mm
Date: 6 SEP. '18	Revision: 1.1			

GRADCONN

www.gradconn.com

THIS DRAWING IS CONFIDENTIAL AND MUST NOT BE COPIED OR DISCLOSED WITHOUT WRITTEN CONSENT

Type: Cable 322 RF
CABLE 322 RF
Drawing Number:
Sheet 1 of 1
Drawing © E and O E