

CABLE 321 RF: RF CABLE ASSEMBLY, MURATA HSC PLUG + SMA RIGHT ANGLE PLUG + 0.81MM CABLE

SPECIFICATIONS:

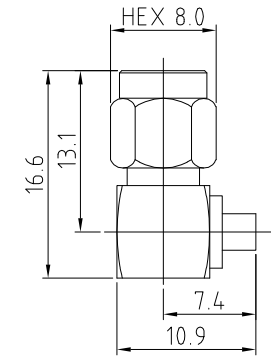
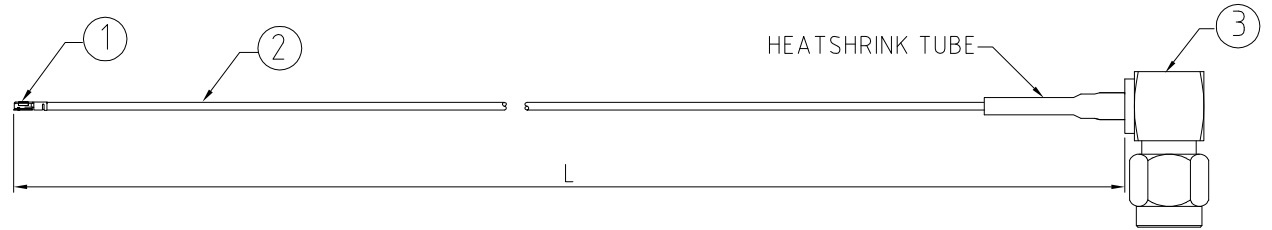
1. MURATA HSC R/A PLUG, P/N: MXHP32
2. 0.81MM COAXIAL CABLE, COLOR: WHITE
3. SMA RIGHT ANGLE PLUG, GOLD, P/N: RFCT-SMA048-M08

NOTES:

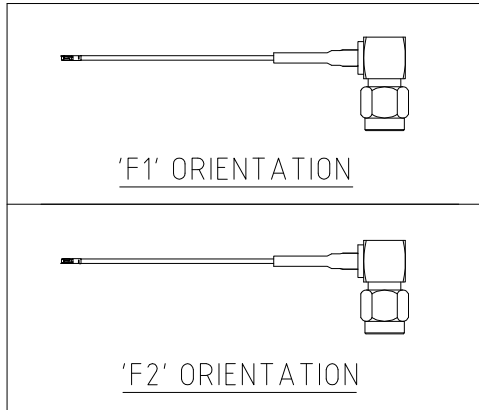
1. THE ORIENTATION OF CONNECTORS ON DRAWING IS FOR REFERENCE ONLY, IF THE ORDER IS LEFT BLANK THE CONNECTOR WILL NOT HAVE FIXED ORIENTATION.
2. FIXED ORIENTATION IS SUGGESTED FOR CABLE LENGTH 25MM TO 100MM. PLEASE SPECIFY THE FIXED ORIENTATIONS FROM THE ORDER CODE (F1, F2, ETC)
3. CONTACT GRADCONN IF THE ORIENTATION YOU REQUIRE IS NOT SHOWN.
4. WORKING FREQUENCY RANGE: DC-6GHz.

USAGE PRECAUTIONS: CABLES USING 'MICRO' COAX ARE DELICATE:

- (i) HANDLE WITH CARE.
- (ii) DO NOT TWIST, APPLY EXCESSIVE FORCES OR SHARP BENDS TO THE CABLE. DO NOT FORCEFULLY DEFORM WIRES.
- (iii) CONSULT CONNECTOR MANUFACTURER'S DATASHEETS FOR DETAILED NOTES ON HANDLING INSTRUCTIONS.



SMA PLUG DETAIL DIMENSION



HOW TO ORDER  
CABLE 321 RF - X X X - X X

"L" LENGTH IN MM:  
eg: 100MM = 100  
(MIN. 025-MAX.400  
STANDARD = 100, 150, 200)  
Tolerance: 50-200mm: ±5mm.  
201-400mm: ±7mm.

ORIENTATION OPTIONS:  
BLANK = DOES NOT HAVE A FIXED ORIENTATION  
F1 = OPPOSITE ORIENTATION (L=25-200MM)  
F2 = SAME ORIENTATION (L=25-200MM)  
(SEE NOTES 1, 2, 3 AND DIAGRAMS FOR MORE INFORMATION)

REV. DATE & DRN  
1.0 03/08/18 - NYW RELEASE

Scale: NTS	THIRD ANGLE	Unstated X .XX .XXX ANGLES	Tolerances: ±0.2 ±0.1 ±0.05 ±5	Material SEE NOTE
Drawn: NYW				
App'd: XXX	Title: CABLE ASSEMBLY	NOT TO SCALE		
Date: 3 AUG. '18	Revision: 1.0	Unit: mm		

© THIS DRAWING IS CONFIDENTIAL AND MUST NOT BE COPIED OR DISCLOSED WITHOUT WRITTEN CONSENT

Type: Cable 321 RF
CABLE 321 RF
Drawing Number:
Sheet 1 of 1
Drawing © E and O E