

CABLE 320 RF: RF CABLE ASSEMBLY, I-PEX MHF I LK PLUG + SMA STRAIGHT BULKHEAD JACK +  $\phi$ 1.37MM CABLE - 3GHz

SPECIFICATIONS:

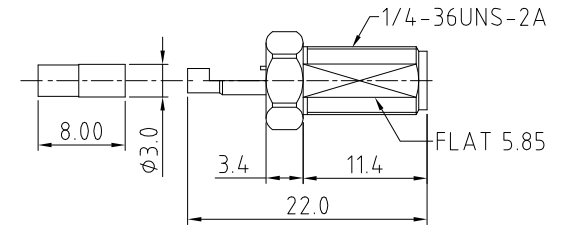
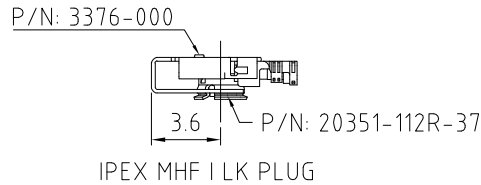
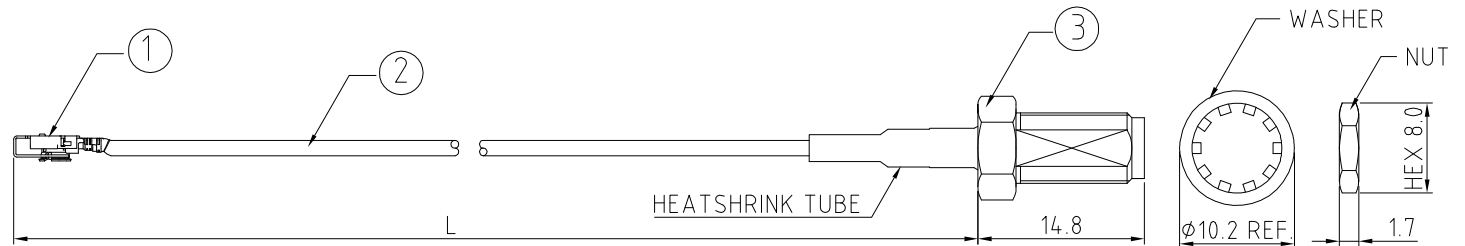
1. I-PEX MHF I LK PLUG, P/N: SEE DRAWING.
2.  $\phi$ 1.37MM COAXIAL CABLE, COLOR: BLACK.
3. SMA STRAIGHT BULKHEAD JACK, GOLD. P/N: RFCT-SMA010-F78.

NOTES:

1. THE ORIENTATION OF CONNECTORS ON DRAWING IS FOR REFERENCE ONLY, IF THE ORDER IS LEFT BLANK THE CONNECTOR WILL NOT HAVE FIXED ORIENTATION.
2. FIXED ORIENTATION IS SUGGESTED FOR CABLE LENGTH 25MM TO 100MM. PLEASE SPECIFY THE FIXED ORIENTATIONS FROM THE ORDER CODE (F1, F2, ETC)
3. CONTACT GRAD CONN IF THE ORIENTATION YOU REQUIRE IS NOT SHOWN.
4. WORKING FREQUENCY RANGE: DC-3GHz.

USAGE PRECAUTIONS: CABLES USING 'MICRO' COAX ARE DELICATE:

- (i) HANDLE WITH CARE.
- (ii) DO NOT TWIST; APPLY EXCESSIVE FORCES OR SHARP BENDS TO THE CABLE. DO NOT FORCEFULLY DEFORM WIRES.
- (iii) CONSULT CONNECTOR MANUFACTURER'S DATASHEETS FOR DETAILED NOTES ON HANDLING INSTRUCTIONS.



HOW TO ORDER  
CABLE 320 RF - X X X - X X - X - 1

"L" LENGTH IN MM

eg: 100MM = 100

(MIN. = 025, MAX. = 400)

STANDARD = 100, 150, 200)

Tolerance: <50mm :  $\pm$ 2mm.

51-200mm:  $\pm$ 5mm.

201-400mm:  $\pm$ 7mm.

CABLE SIZE:

1 =  $\phi$ 1.37MM CABLE, COLOR: BLACK

WASHER AND NUT OPTIONS:

BLANK = SEPERATELY PACKED (STANDARD)

A = ASSEMBLED WITH CONNECTOR

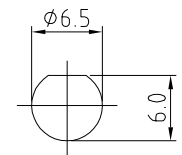
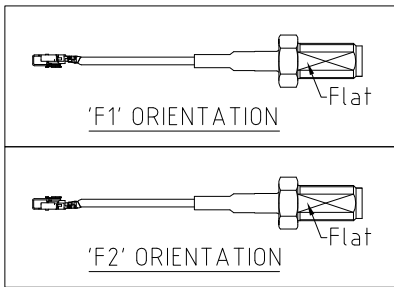
ORIENTATION OPTIONS:

BLANK = DOES NOT HAVE A FIXED ORIENTATION

F1 = MHF CONNECTION DOWN (L=25-200MM)

F2 = MHF CONNECTION UP (L=25-200MM)

(SEE NOTES 1, 2, 3 AND DIAGRAMS FOR MORE INFORMATION)



RECOMMENDED SMA MOUNTING HOLE

REV. DATE & DRN  
10 27/07/18 - NYW RELEASE

Scale: NTS	THIRD ANGLE	Unstated X .XX .XXX ANGLES	Tolerances: N/A N/A N/A N/A	Material SEE NOTE
Drawn: NYW				
App'd: XXX	Title CABLE ASSEMBLY	NOT TO SCALE		
Date: 27 JUL '18	Revision: 1.0	Unit: mm		

www.gradconn.com

THIS DRAWING IS CONFIDENTIAL AND MUST NOT BE COPIED OR DISCLOSED WITHOUT WRITTEN CONSENT

Type: Cable 320 RF
CABLE 320 RF
Drawing Number:
Sheet 1 of 1
Drawing C  E and O E