

CABLE 293 RF: RP SMA STRAIGHT PLUG + SMA STRAIGHT BULKHEAD JACK W/O-RING RATED TO IP67/68 + RG178 CABLE

SPECIFICATIONS :

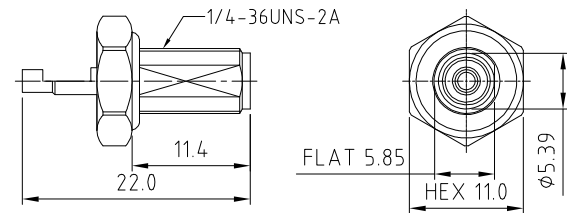
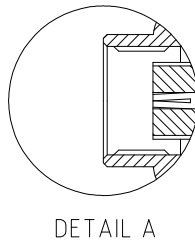
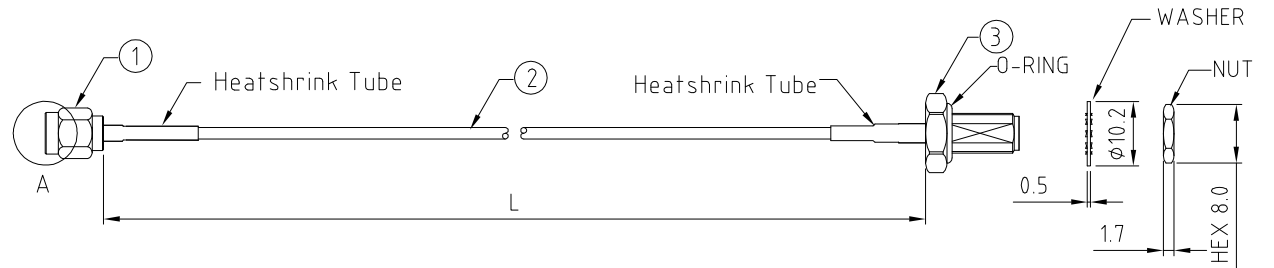
1. RP SMA STRAIGHT PLUG, P/N: RFCT-SMA017-M78.
2. RG178 COAXIAL CABLE, COLOR: BROWN.
3. SMA STRAIGHT BULKHEAD JACK W/O-RING RATED TO IP67/68, P/N: RFCT-SMA002-F78.

ENVIRONMENTAL:

- A. BULKHEAD MOUNTED CONNECTOR (RFCT-SMA002-F78) TESTED TO THE FOLLOWING SPECIFICATION:
- i. IP6X - DUST TIGHT - NO PARTICLE INGRESS.
 - ii. IPX7 WATERPROOF FOR 30 MINUTES UP TO 1 METER UNDERWATER.
 - iii. IPX8 WATERPROOF FOR 48 HOURS AT 1 METER UNDERWATER.
 - iv. IPX8 WATERPROOF FOR 12 HOURS AT 5 METERS UNDERWATER.
 - v. PRESSURE TEST - 1 BAR FOR 10 SECONDS.

NOTES:NOTES:

1. WORKING FREQUENCY RANGE: DC-3GHz.



SMA JACK DETAIL DRAWING

HOW TO ORDER
CABLE 293 RF - X X X X - X - 1

"L" LENGTH IN MM:

eg: 100MM = 0100

(MIN. 0050-MAX.2000

STANDARD = 0100, 0150, 0200)

Tolerance: 50mm: ± 2 mm.

51-200mm: ± 5 mm.

201-500mm: ± 7 mm.

>501mm: ± 10 mm.

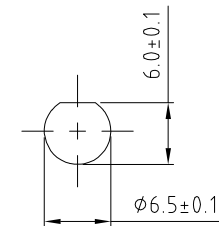
CABLE SIZE:

1 = RG178 CABLE, COLOR: BROWN.

WASHER AND NUT OPTIONS:

BLANK = SEPARATELY PACKED (STANDARD)

A = ALL ASSEMBLED WITH CONNECTOR



RECOMMENDED SMA MOUNTING HOLE

Scale: NTS	THIRD ANGLE	Unstated .X .XX .XXX ANGLES	Tolerances: ± 0.2 ± 0.1 ± 0.05 ± 5
Drawn: NYW			
App'd: XXX	Title: CABLE ASSEMBLY		
Date: 29 NOV. '17	Revision: 1.0	Unit: mm	



IP67/68 Rated Cables



www.gradconn.com

Type: Cable 293 RF

CABLE 293 RF

Drawing Number:

Sheet 1 of 1

Drawing © E and O E