

CABLE 279 RF: RF CABLE ASSEMBLY, IPEX MHF + RP N STRAIGHT BULKHEAD JACK W/O-RING RATED TO IP67/68 + 1.37MM CABLE

SPECIFICATIONS:

1. I-PEX MHF PLUG, P/N: 20351-112R-37.
2. ϕ 1.37MM COAXIAL CABLE, COLOR: BLACK.
3. RP N STRAIGHT BULKHEAD JACK WITH O-RING RATED TO IP67/68, P/N: RFCT-N004-F78.

ENVIRONMENTAL:

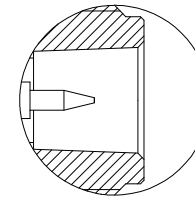
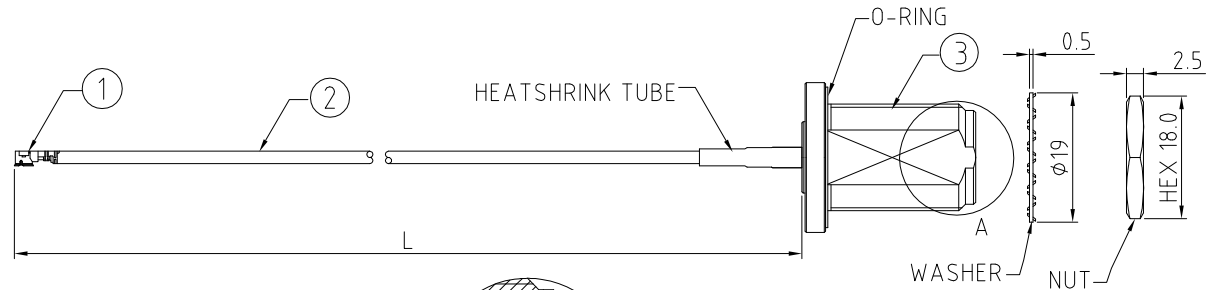
- A. BULKHEAD MOUNTED CONNECTOR (RFCT-N004-F78) RATED TO THE FOLLOWING SPECIFICATION:
- i. IP6X - DUST TIGHT - NO PARTICLE INGRESS.
 - ii. IPX7 WATERPROOF FOR 30 MINUTES UP TO 1 METER UNDERWATER.
 - iii. IPX8 WATERPROOF FOR 48 HOURS AT 1 METER UNDERWATER.

NOTES:

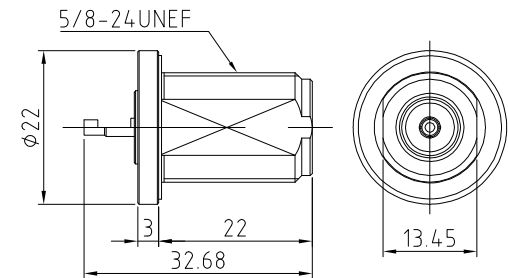
1. THE ORIENTATION OF CONNECTORS ON DRAWING IS FOR REFERENCE ONLY, IF THE ORDER IS LEFT BLANK THE CONNECTOR WILL NOT HAVE FIXED ORIENTATION.
2. FIXED ORIENTATION IS SUGGESTED FOR CABLE LENGTH 25MM TO 100MM. PLEASE SPECIFY THE FIXED ORIENTATIONS FROM THE ORDER CODE (F1, F2, ETC)
3. CONTACT GRAD CONN IF THE ORIENTATION YOU REQUIRE IS NOT SHOWN.
4. WORKING FREQUENCY RANGE: DC-3GHz

USAGE PRECAUTIONS: CABLES USING 'MICRO' COAX ARE DELICATE:

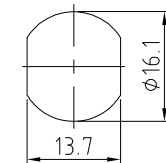
- (i) HANDLE WITH CARE.
- (ii) DO NOT TWIST; APPLY EXCESSIVE FORCES OR SHARP BENDS TO THE CABLE. DO NOT FORCEFULLY DEFORM WIRES.
- (iii) CONSULT CONNECTOR MANUFACTURER'S DATASHEETS FOR DETAILED NOTES ON HANDLING INSTRUCTIONS.



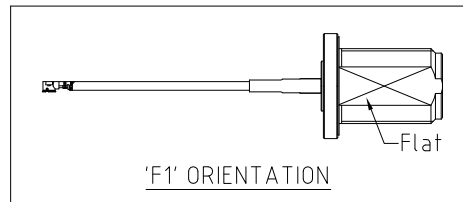
DETAIL A



N DETAIL DRAWING



RECOMMENDED N MOUNTING HOLE (TOLERANCE: ± 0.07)



'F1' ORIENTATION

HOW TO ORDER

CABLE 279 RF - XXX - XX - X - 1

"L" LENGTH IN MM
eg: 100MM = 100
(MIN. 025-MAX.400)
STANDARD = 100, 150, 200
Tolerance: <50mm : ± 2 mm.
51-200mm: ± 5 mm.
201-400mm: ± 7 mm.

CABLE SIZE:
1 = ϕ 1.37MM CABLE, COLOR: BLACK

WASHER AND NUT OPTIONS:
BLANK = SEPARATELY PACKED (STANDARD)
A = ASSEMBLED WITH CONNECTOR

ORIENTATION OPTIONS:
BLANK = DOES NOT HAVE A FIXED ORIENTATION
F1 = MHF CONNECTION DOWN OR UP(L=25-200MM)
(SEE NOTES 1, 2, 3 AND DIAGRAMS FOR MORE INFORMATION)

REV. DATE & DRN
1.0 16/06/18 NYW RELEASE
1.1 17/06/18 NYW RELEASE
1.2 17/06/18 NYW RELEASE
1.3 17/06/18 NYW RELEASE
1.4 17/06/18 NYW RELEASE
1.5 17/06/18 NYW RELEASE
1.6 17/06/18 NYW RELEASE
1.7 17/06/18 NYW RELEASE
1.8 17/06/18 NYW RELEASE
1.9 17/06/18 NYW RELEASE
2.0 17/06/18 NYW RELEASE
2.1 17/06/18 NYW RELEASE
2.2 17/06/18 NYW RELEASE
2.3 17/06/18 NYW RELEASE
2.4 17/06/18 NYW RELEASE
2.5 17/06/18 NYW RELEASE
2.6 17/06/18 NYW RELEASE
2.7 17/06/18 NYW RELEASE
2.8 17/06/18 NYW RELEASE
2.9 17/06/18 NYW RELEASE
3.0 17/06/18 NYW RELEASE
3.1 17/06/18 NYW RELEASE
3.2 17/06/18 NYW RELEASE
3.3 17/06/18 NYW RELEASE
3.4 17/06/18 NYW RELEASE
3.5 17/06/18 NYW RELEASE
3.6 17/06/18 NYW RELEASE
3.7 17/06/18 NYW RELEASE
3.8 17/06/18 NYW RELEASE
3.9 17/06/18 NYW RELEASE
4.0 17/06/18 NYW RELEASE
4.1 17/06/18 NYW RELEASE
4.2 17/06/18 NYW RELEASE
4.3 17/06/18 NYW RELEASE
4.4 17/06/18 NYW RELEASE
4.5 17/06/18 NYW RELEASE
4.6 17/06/18 NYW RELEASE
4.7 17/06/18 NYW RELEASE
4.8 17/06/18 NYW RELEASE
4.9 17/06/18 NYW RELEASE
5.0 17/06/18 NYW RELEASE
5.1 17/06/18 NYW RELEASE
5.2 17/06/18 NYW RELEASE
5.3 17/06/18 NYW RELEASE
5.4 17/06/18 NYW RELEASE
5.5 17/06/18 NYW RELEASE
5.6 17/06/18 NYW RELEASE
5.7 17/06/18 NYW RELEASE
5.8 17/06/18 NYW RELEASE
5.9 17/06/18 NYW RELEASE
6.0 17/06/18 NYW RELEASE
6.1 17/06/18 NYW RELEASE
6.2 17/06/18 NYW RELEASE
6.3 17/06/18 NYW RELEASE
6.4 17/06/18 NYW RELEASE
6.5 17/06/18 NYW RELEASE
6.6 17/06/18 NYW RELEASE
6.7 17/06/18 NYW RELEASE
6.8 17/06/18 NYW RELEASE
6.9 17/06/18 NYW RELEASE
7.0 17/06/18 NYW RELEASE
7.1 17/06/18 NYW RELEASE
7.2 17/06/18 NYW RELEASE
7.3 17/06/18 NYW RELEASE
7.4 17/06/18 NYW RELEASE
7.5 17/06/18 NYW RELEASE
7.6 17/06/18 NYW RELEASE
7.7 17/06/18 NYW RELEASE
7.8 17/06/18 NYW RELEASE
7.9 17/06/18 NYW RELEASE
8.0 17/06/18 NYW RELEASE
8.1 17/06/18 NYW RELEASE
8.2 17/06/18 NYW RELEASE
8.3 17/06/18 NYW RELEASE
8.4 17/06/18 NYW RELEASE
8.5 17/06/18 NYW RELEASE
8.6 17/06/18 NYW RELEASE
8.7 17/06/18 NYW RELEASE
8.8 17/06/18 NYW RELEASE
8.9 17/06/18 NYW RELEASE
9.0 17/06/18 NYW RELEASE
9.1 17/06/18 NYW RELEASE
9.2 17/06/18 NYW RELEASE
9.3 17/06/18 NYW RELEASE
9.4 17/06/18 NYW RELEASE
9.5 17/06/18 NYW RELEASE
9.6 17/06/18 NYW RELEASE
9.7 17/06/18 NYW RELEASE
9.8 17/06/18 NYW RELEASE
9.9 17/06/18 NYW RELEASE
10.0 17/06/18 NYW RELEASE

Scale: NTS	THIRD ANGLE	Unstated Tolerances: X ± 0.2 XX ± 0.1 XXX ± 0.05 ANGLES ± 5
Drawn: NYW		
App'd: XXX	Title CABLE ASSEMBLY	
Date: 7 MAR '18	Revision: 1.1	Unit: mm

IP67/68 Rated Cables www.gradconn.com

Type: Cable 279 RF
CABLE 279 RF
Drawing Number:
Sheet 1 of 1
Drawing © E and O E