

CABLE 225 RF: RF CABLE ASSEMBLY, HIROSE U.FL PLUG + RP SMA BULKHEAD JACK WITH 13.0 THREAD + 1.13 CABLE - 6GHz

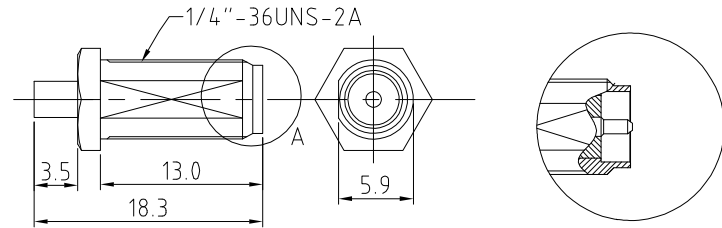
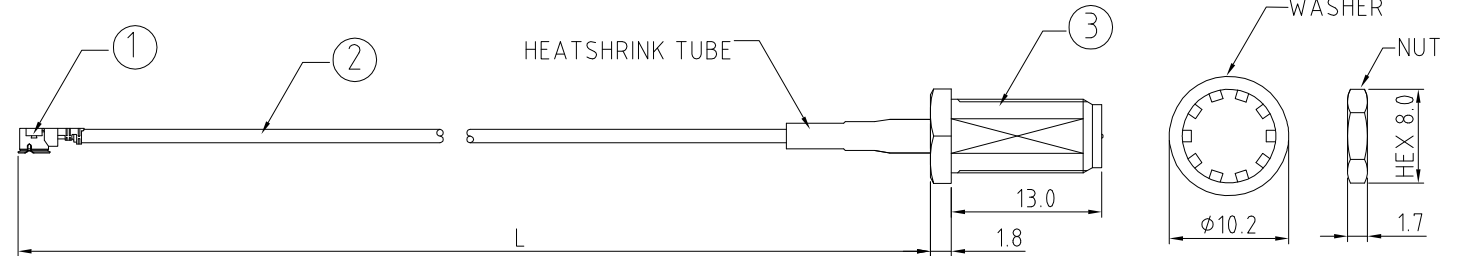
SPECIFICATIONS

- HIROSE U.FL PLUG P/N: U.FL-LP-068.
- Ø1.13MM COAXIAL CABLE, COLOR: BLACK.
- RP SMA ST BULKHEAD JACK, GOLD, P/N: RFCT-SMA012-F13.

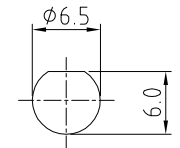
NOTES:

- THE ORIENTATION OF CONNECTORS ON DRAWING IS FOR REFERENCE ONLY, IF THE ORDER IS LEFT BLANK THE CONNECTOR WILL NOT HAVE FIXED ORIENTATION.
- FIXED ORIENTATION IS SUGGESTED FOR CABLE LENGTH 25MM TO 100MM. PLEASE SPECIFY THE FIXED ORIENTATIONS FROM THE ORDER CODE (F1, F2, ETC)
- CONTACT GRAD CONN IF THE ORIENTATION YOU REQUIRE IS NOT SHOWN.
- WORKING FREQUENCY RANGE: DC-6GHz

USAGE PRECAUTIONS: CABLES USING 'MICRO' COAX ARE DELICATE:
 (i) HANDLE WITH CARE.
 (ii) DO NOT TWIST; APPLY EXCESSIVE FORCES OR SHARP BENDS TO THE CABLE. DO NOT FORCEFULLY DEFORM WIRES.
 (iii) CONSULT CONNECTOR MANUFACTURER'S DATASHEETS FOR DETAILED NOTES ON HANDLING INSTRUCTIONS.



SMA JACK DETAIL DIMENSION



RECOMMENDED SMA MOUNTING HOLE

HOW TO ORDER

CABLE 225 RF - XXX - X - XX - 1

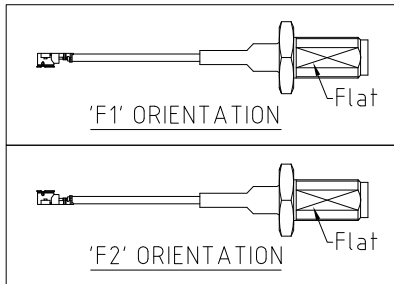
"L" LENGTH IN MM
 eg: 100MM = 0100
 (MIN. 025-MAX.400)

STANDARD = 100, 150, 200
 Tolerance: <50mm : ±2mm.
 51-200mm: ±5mm.
 201-400mm: ±7mm.

WASHER AND NUT OPTIONS:
 BLANK = SEPERATELY PACKED (STANDARD)
 A = ASSEMBLED WITH CONNECTOR

CABLE SIZE OPTIONS:
 1 = Ø1.13mm CABLE, BLACK

ORIENTATION OPTIONS:
 BLANK = DOES NOT HAVE A FIXED ORIENTATION
 F1 = HIROSE CONNECTION DOWN (L=25-100MM)
 F2 = HIROSE CONNECTION UP (L=25-100MM)
 (SEE NOTES 1, 2, 3 AND DIAGRAMS FOR MORE INFORMATION)



REV. DATE & DRN
 10 25/11/15 - NYW RELEASE

Scale: NTS	THIRD ANGLE	Unstated X .XX .XXX ANGLES	Tolerances: ±0.2 ±0.1 ±0.05 ±5	Material SEE NOTE
Drawn: NYW		Title CABLE ASSEMBLY		NOT TO SCALE
App'd: XXX	Date: 25 NOV. '15	Revision: 1.0	Unit: mm	

THIS DRAWING IS CONFIDENTIAL AND MUST NOT BE COPIED OR DISCLOSED WITHOUT WRITTEN CONSENT

Type: Cable 225 RF
CABLE 225 RF
Drawing Number:
Sheet 1 of 1
Drawing © E and O E