

CABLE 207 RF: RF CABLE ASSEMBLY, I-PEX MHF IV L PLUG + FME S/T BULKHEAD PLUG WITH O-RING + 1.13MM CABLE, 3GHz

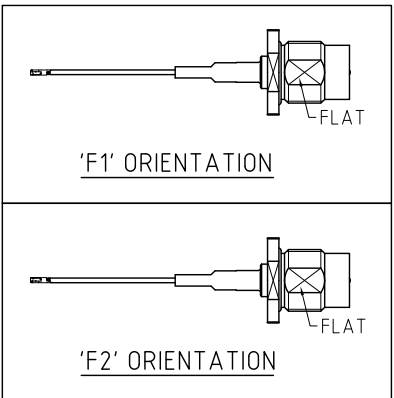
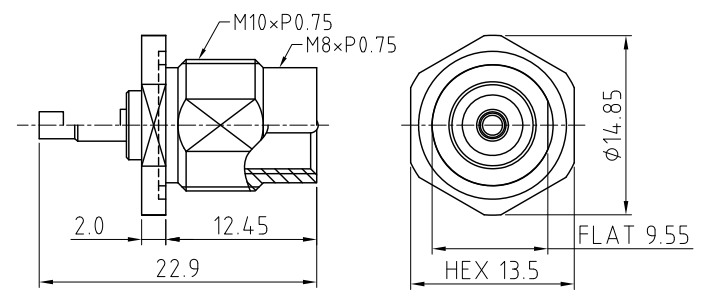
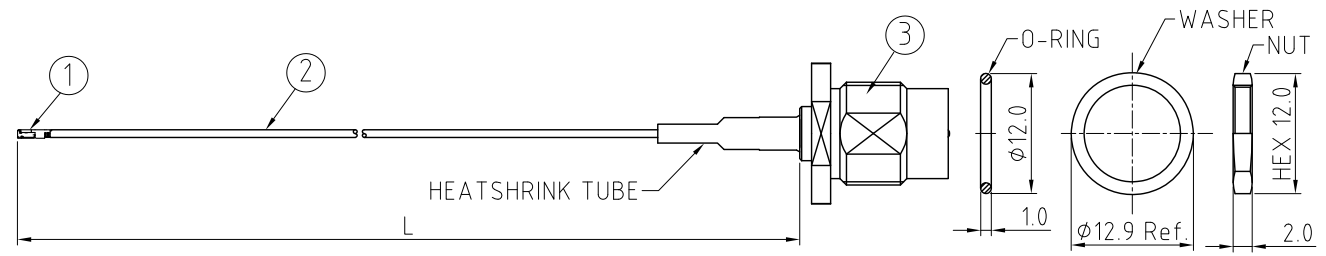
SPECIFICATIONS:

1. I-PEX MHF IV L PLUG (20565-001R-13).
2. ϕ 1.13MM COAXIAL CABLE, COLOR: GRAY
3. FME STRAIGHT BULKHEAD PLUG WITH O-RING, P/N: RFCT-FME002-M78.

USAGE PRECAUTIONS: CABLES USING 'MICRO' COAX ARE DELICATE:
 (i) HANDLE WITH CARE.
 (ii) DO NOT TWIST; APPLY EXCESSIVE FORCES OR SHARP BENDS TO THE CABLE. DO NOT FORCEFULLY DEFORM WIRES.
 (iii) CONSULT CONNECTOR MANUFACTURER'S DATASHEETS FOR DETAILED NOTES ON HANDLING INSTRUCTIONS.

NOTES:

1. THE ORIENTATION OF CONNECTORS ON DRAWING IS FOR REFERENCE ONLY, IF THE ORDER IS LEFT BLANK THE CONNECTOR WILL NOT HAVE FIXED ORIENTATION.
2. FIXED ORIENTATION IS SUGGESTED FOR CABLE LENGTH 25MM TO 100MM. PLEASE SPECIFY THE FIXED ORIENTATIONS FROM THE ORDER CODE (F1, F2, ETC)
3. CONTACT GRAD CONN IF THE ORIENTATION YOU REQUIRE IS NOT SHOWN.
4. WORKING FREQUENCY RANGE: DC-3GHz
5. OPERATING TEMPERATURE: -40°C TO +85°C.
6. IMPEDANCE: 50 OHM.



HOW TO ORDER
 CABLE 207 RF - XXX - XX - X - 2

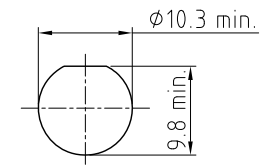
"L" LENGTH IN MM
 eg: 100MM = 100
 (MIN. 025-MAX.400
 STANDARD = 100, 150, 200)
 Tolerance: <50mm : \pm 2mm.
 51-200mm: \pm 5mm.
 201-400mm: \pm 7mm.

CABLE SIZE OPTIONS:
 2 = ϕ 1.13MM CABLE, COLOR: GRAY

O-RING, WASHER AND NUT OPTIONS:
 BLANK = SEPARATELY PACKED (STANDARD)
 A = ALL ASSEMBLED WITH CONNECTOR

ORIENTATION OPTIONS:
 BLANK = DOES NOT HAVE A FIXED ORIENTATION
 F1 = MHF CONNECTION DOWN (L=25-220MM)
 F2 = MHF CONNECTION UP (L=25-220MM)
 (SEE NOTES 1, 2, 3 AND DIAGRAMS FOR MORE INFORMATION)

FME DETAIL DRAWING



RECOMMENDED FME MOUNTING HOLE

REV. DATE & DRN
 10 19/05/16 - NYW RELEASE
 11 29/06/16 - NYW E OPTION, ADD 113 CABLE OPTION.
 12 08/04/17 - NYW
 13 11/07/24 - CC
 Add Frequency 3GHz to title.
 Change mounting hole dimensions.

Scale: NTS	THIRD ANGLE	Unstated Tolerances: .X \pm 0.2 .XX \pm 0.2 .XXX \pm 0.2 ANGLES N/A	Material SEE NOTE
Drawn: CC			
App'd: XXX	Title CABLE ASSEMBLY	NOT TO SCALE	
Date: 11 JUL '24	Revision: 1.3	Unit: mm	

© THIS DRAWING IS CONFIDENTIAL AND MUST NOT BE COPIED OR DISCLOSED WITHOUT WRITTEN CONSENT

Type: Cable 207 RF
CABLE 207 RF
Drawing Number:
Sheet 1 of 1
Drawing © E and O E