



CABLE 196 RF: RF CABLE ASSEMBLY, MMCX R/A PLUG + SMA STRAIGHT BULKHEAD JACK WITH O-RING RATED TO IP67/68 + MULTIPLE CABLE SIZES

SPECIFICATIONS:

- MMCX RIGHT ANGLE PLUG, P/N:
FOR RG178, ϕ 1.37MM CABLES: RFCT-MMCX003-M78.
FOR ϕ 1.13MM LL, ϕ 1.13MM CABLES: RFCT-MMCX002-M13.
FOR RG316 CABLE: RFCT-MMCX004-M74.
- COAXIAL CABLE, SEE P/N FOR DETAIL.
- SMA STRAIGHT BULKHEAD JACK WITH O-RING RATED TO IP67/68, P/N: FOR ϕ 1.13-RG178CABLE: RFCT-SMA002-F78. FOR RG316 CABLE: RFCT-SMA002-F74.

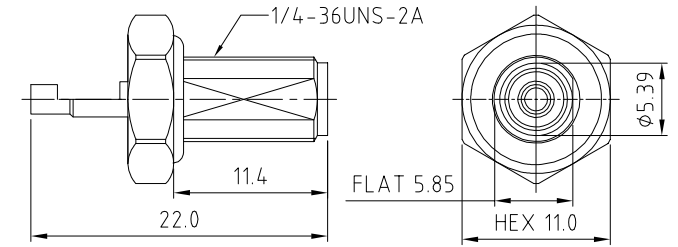
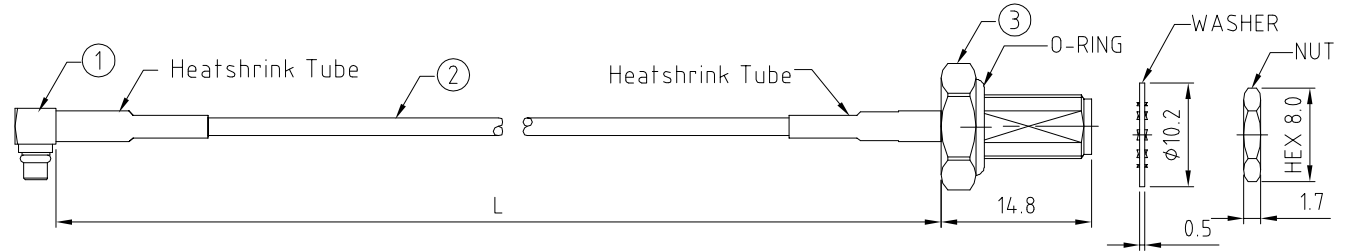
USAGE PRECAUTIONS: CABLES USING 'MICRO' COAX ARE DELICATE:
 (i) HANDLE WITH CARE.
 (ii) DO NOT TWIST; APPLY EXCESSIVE FORCES OR SHARP BENDS TO THE CABLE. DO NOT FORCEFULLY DEFORM WIRES.
 (iii) CONSULT CONNECTOR MANUFACTURER'S DATASHEETS FOR DETAILED NOTES ON HANDLING INSTRUCTIONS.

ENVIRONMENTAL:

- A. BULKHEAD MOUNTED CONNECTOR (RFCT-SMA002-Fxx) TESTED TO THE FOLLOWING SPECIFICATION:
- IP6X - DUST TIGHT - NO PARTICLE INGRESS.
 - IPX7 WATERPROOF FOR 30 MINUTES UP TO 1 METER UNDERWATER.
 - IPX8 WATERPROOF FOR 48 HOURS AT 1 METER UNDERWATER.
 - IPX8 WATERPROOF FOR 12 HOURS AT 5 METERS UNDERWATER.
 - PRESSURE TEST - 1 BAR FOR 10 SECONDS.

NOTES:

- THE ORIENTATION OF CONNECTORS ON DRAWING IS FOR REFERENCE ONLY, IF THE ORDER IS LEFT BLANK THE CONNECTOR WILL NOT HAVE FIXED ORIENTATION.
- FIXED ORIENTATION IS SUGGESTED FOR CABLE LENGTH 50MM TO 100MM. PLEASE SPECIFY THE FIXED ORIENTATIONS FROM THE ORDER CODE (F1, F2, ETC)
- CONTACT GRAD CONN IF THE ORIENTATION YOU REQUIRE IS NOT SHOWN.
- WORKING FREQUENCY RANGE: DC-3GHz.
- OPERATING TEMPERATURE: -40°C~+125°C.



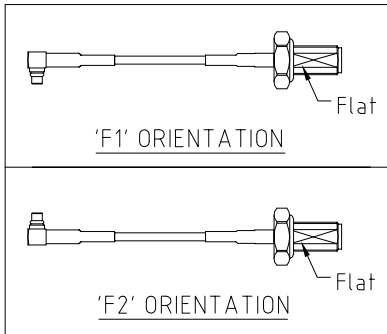
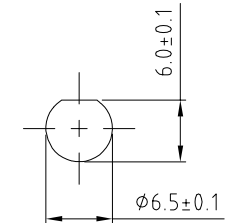
HOW TO ORDER
 CABLE 196 RF - XXXX - XX - X - X

"L" LENGTH IN MM:
 eg: 100MM = 0100
 (MIN. 0050-MAX 2000
 STANDARD = 0100, 0150, 0200)
 Tolerance: <50mm: \pm 2mm.
 51-200mm: \pm 5mm.
 201-500mm: \pm 7mm.
 >501mm: \pm 10mm.

CABLE SIZE OPTIONS:
 1 = RG178 CABLE, COLOR: BROWN.
 2 = ϕ 1.13MM LOW LOSS CABLE, COLOR: GRAY.
 3 = ϕ 1.37MM CABLE, COLOR: BLACK.
 4 = ϕ 1.13MM CABLE, COLOR: GRAY.
 5 = RG316 CABLE, COLOR: BROWN.

WASHER AND NUT OPTIONS:
 BLANK = SEPARATELY PACKED (STANDARD)
 A = ALL ASSEMBLED WITH CONNECTOR

ORIENTATION OPTIONS:
 BLANK = DOES NOT HAVE A FIXED ORIENTATION
 F1 = MMCX CONNECTION DOWN (L=50-200MM)
 F2 = MMCX CONNECTION UP (L=50-200MM)
 (SEE NOTES 1, 2, 3 AND DIAGRAMS FOR MORE INFORMATION)



10	19/07/15 - NYW RELEASE
11	23/07/15 - NYW UPDATE SMA PART NUMBER
12	29/10/15 - NYW ADD IP67/68 RATING INFO
13	ADD 11.13MM CABLE OPTION
14	02/04/18 - NYW UPDATE MMCX P/N FOR RG178 CABLE
15	27/05/18 - NYW ADD CABLE SIZE 3 OPTION
16	ADD CABLE SIZE 4 OPTION
17	24/05/19 - NYW ADD OPERATING TEMP..
18	24/07/22 - NYW ADD CABLE OPTION 5.

Scale:	NTS	THIRD ANGLE	Unstated .X .XX .XXX ANGLES	Tolerances: N/A N/A N/A N/A
Drawn:	NYW			
App'd:	XXX	Title	CABLE ASSEMBLY	
Date:	24 JAN. '22	Revision:	1.8	Unit: mm

IP67/68 Rated Cables www.gradconn.com

Type:	Cable 196 RF
	CABLE 196 RF
Drawing Number:	Sheet 1 of 1
Drawing	E and O E