

CABLE 184 RF: HIROSE U.FL + SMA STRAIGHT BULKHEAD JACK WITH O-RING RATED TO IP67/68 + MULTIPLE CABLE SIZES

SPECIFICATIONS :

- HIROSE U.FL PLUG, P/N: FOR ϕ 1.37MM CABLE: U.FL-LP-088.
FOR ϕ 1.13MM CABLE: U.FL-LP-068.
FOR 1.32DS CABLE: U.FL-LP-088.
- COAXIAL CABLE, SEE P/N OPTIONS.
- SMA STRAIGHT BULKHEAD JACK WITH O-RING RATED TO IP67/68, P/N: RFCT-SMA002-F78.

USAGE PRECAUTIONS: CABLES USING 'MICRO' COAX ARE DELICATE:

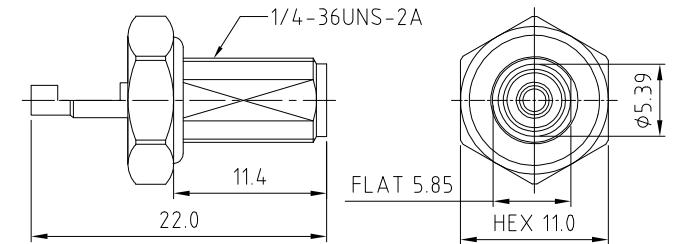
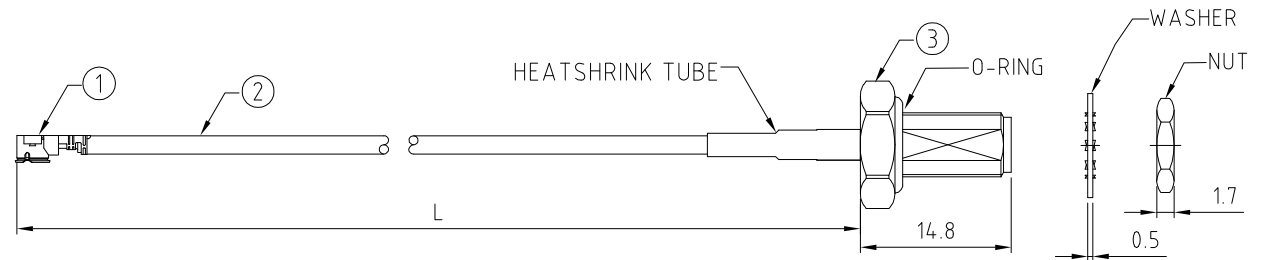
- HANDLE WITH CARE.
- DO NOT TWIST; APPLY EXCESSIVE FORCES OR SHARP BENDS TO THE CABLE. DO NOT FORCEFULLY DEFORM WIRES.
- CONSULT CONNECTOR MANUFACTURER'S DATASHEETS FOR DETAILED NOTES ON HANDLING INSTRUCTIONS.

ENVIRONMENTAL:

- A. BULKHEAD MOUNTED CONNECTOR (RFCT-SMA002-F78) TESTED TO THE FOLLOWING SPECIFICATION:
- IP6X - DUST TIGHT - NO PARTICLE INGRESS.
 - IPX7 WATERPROOF FOR 30 MINUTES UP TO 1 METER UNDERWATER.
 - IPX8 WATERPROOF FOR 48 HOURS AT 1 METER UNDERWATER.
 - IPX8 WATERPROOF FOR 12 HOURS AT 5 METERS UNDERWATER.
 - PRESSURE TEST - 1 BAR FOR 10 SECONDS.

NOTES:

- THE ORIENTATION OF CONNECTORS ON DRAWING IS FOR REFERENCE ONLY, IF THE ORDER IS LEFT BLANK THE CONNECTOR WILL NOT HAVE FIXED ORIENTATION.
- FIXED ORIENTATION IS SUGGESTED FOR CABLE LENGTH 25MM TO 100MM. PLEASE SPECIFY THE FIXED ORIENTATIONS FROM THE ORDER CODE (F1, F2, ETC)
- CONTACT GRADCONN IF THE ORIENTATION YOU REQUIRE IS NOT SHOWN.
- WORKING FREQUENCY RANGE: DC-3GHz.



HOW TO ORDER
CABLE 184 RF - X X X - X X - X - X

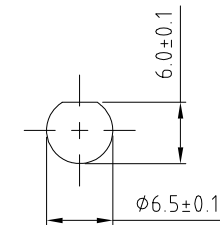
"L" LENGTH IN MM:
eg: 100MM = 100
(MIN. 050-MAX.400)
STANDARD = 100, 150, 200
Tolerance: 50-200mm: ± 5 mm.
201-400mm: ± 7 mm.

CABLE SIZE OPTIONS:
1 = ϕ 1.37MM CABLE, COLOR: BLACK.
2 = ϕ 1.13MM CABLE, COLOR: GRAY.
3 = 1.32DS CABLE, COLOR: GRAY

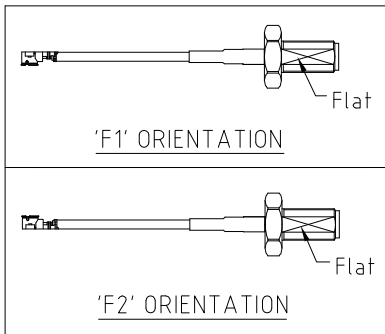
WASHER AND NUT OPTIONS:
BLANK = SEPARATELY PACKED (STANDARD)
A = ALL ASSEMBLED WITH CONNECTOR

ORIENTATION OPTIONS:
BLANK = DOES NOT HAVE A FIXED ORIENTATION
F1 = U.FL CONNECTION DOWN (L=25-100MM)
F2 = U.FL CONNECTION UP (L=25-100MM)
(SEE NOTES 1, 2, 3 AND DIAGRAMS FOR MORE INFORMATION)

SMA DETAIL DRAWING



RECOMMENDED SMA MOUNTING HOLE



REV. DATE & DRN	10 28/07/14 - NYW RELEASE
11	23/07/15 - NYW UPDATE SMA PART NUMBER
12	30/07/15 - RJH ADD IP67/68 RATING INFO
13	ADD 1.32DS CABLE OPTION
14	26/06/17 - NYW ADD 1.32DS CABLE OPTION

Scale: NTS	THIRD ANGLE	Unstated Tolerances: X ± 0.2 XX ± 0.1 XXX ± 0.05 ANGLES ± 5
Drawn: NYW		
App'd: XXX	Title CABLE ASSEMBLY	
Date: 27 JUN. '17	Revision: 1.4	Unit: mm

IP67/68 Rated Cables	www.gradconn.com
THIS DRAWING IS CONFIDENTIAL AND MUST NOT BE COPIED OR DISCLOSED WITHOUT WRITTEN CONSENT	

Type: Cable 184 RF
CABLE 184 RF
Drawing Number:
Sheet 1 of 1
Drawing © E and O E