



CABLE 182 RF: RF CABLE ASSEMBLY, MMCX RIGHT ANGLE PLUG + RP SMA BULKHEAD JACK WITH O-RING + MULTIPLE CABLE SIZES

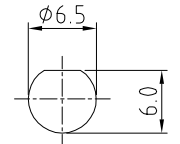
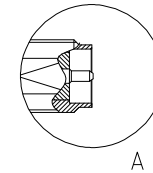
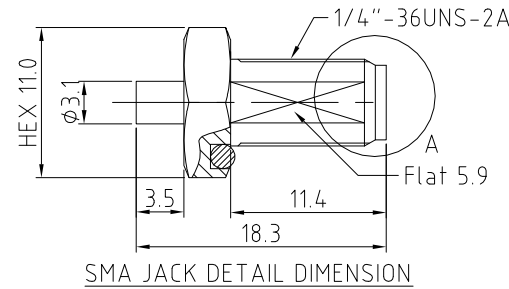
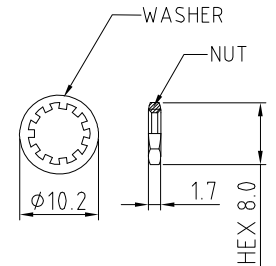
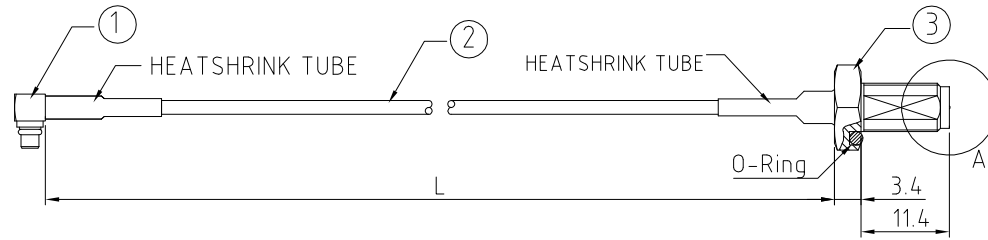
SPECIFICATIONS

1. MMCX RIGHT ANGLE PLUG, P/N:
FOR RG178 CABLE: C05BA3F178001.
FOR $\phi 1.13\text{MM}$ CABLE: C05BA3F113001.
2. COAXIAL CABLE, SEE P/N OPTIONS.
3. RP SMA ST BULKHEAD JACK WITH O-RING, GOLD,
FOR RG178 CABLE: C20AD31178005.
FOR $\phi 1.13\text{MM}$ CABLE: C20AD31113005.

NOTES:

1. THE ORIENTATION OF CONNECTORS ON DRAWING IS FOR REFERENCE ONLY, IF THE ORDER IS LEFT BLANK THE CONNECTOR WILL NOT HAVE FIXED ORIENTATION.
2. FIXED ORIENTATION IS SUGGESTED FOR CABLE LENGTH 50MM TO 100MM. PLEASE SPECIFY THE FIXED ORIENTATIONS FROM THE ORDER CODE (F1, F2, ETC)
3. CONTACT GRAD CONN IF THE ORIENTATION YOU REQUIRE IS NOT SHOWN.
4. WORKING FREQUENCY RANGE: DC-6GHz.

USAGE PRECAUTIONS: CABLES USING 'MICRO' COAX ARE DELICATE:
 (i) HANDLE WITH CARE.
 (ii) DO NOT TWIST; APPLY EXCESSIVE FORCES OR SHARP BENDS TO THE CABLE. DO NOT FORCEFULLY DEFORM WIRES.
 (iii) CONSULT CONNECTOR MANUFACTURER'S DATASHEETS FOR DETAILED NOTES ON HANDLING INSTRUCTIONS.



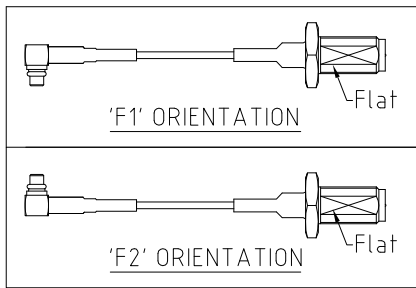
HOW TO ORDER
 CABLE 182 RF - X X X X - X X - X - X

"L" LENGTH IN MM
 eg: 100MM = 0100
 (MIN. = 0050, MAX. = 2000)
 STANDARD = 0100, 0150, 0200
 Tolerance: <50mm : $\pm 2\text{mm}$.
 51-200mm : $\pm 5\text{mm}$.
 201-500mm : $\pm 7\text{mm}$.
 >501mm : $\pm 10\text{mm}$.

CABLE SIZE OPTIONS:
 1 = RG178 CABLE, COLOR: BROWN
 2 = $\phi 1.13\text{MM}$ CABLE, COLOR: GRAY

WASHER AND NUT OPTIONS:
 BLANK = SEPERATELY PACKED (STANDARD)
 A = ASSEMBLED WITH CONNECTOR

ORIENTATION OPTIONS:
 BLANK = DOES NOT HAVE A FIXED ORIENTATION
 F1 = MMCX CONNECTION DOWN (L=50-220MM)
 F2 = MMCX CONNECTION UP (L=50-220MM)
 (SEE NOTES 1, 2, 3 AND DIAGRAMS FOR MORE INFORMATION)



REV. DATE & DRN
 10 23/10/16 - NYW RELEASE
 11 21/11/16 - NYW
 ADD CABLE SIZE OPTION 2.
 12 11/04/16 - NYW
 AMEND 113 CABLE SMA P/N,
 AMEND WORKING FREQUENCY.

Scale: NTS	THIRD ANGLE	Unstated X .XX .XXX ANGLES	Tolerances: ± 0.2 ± 0.1 ± 0.05 ± 5	Material SEE NOTE
Drawn: NYW				
App'd: XXX	Title: CABLE ASSEMBLY	NOT TO SCALE		
Date: 11 APR '16	Revision: 1.2	Unit: mm		

THIS DRAWING IS CONFIDENTIAL AND MUST NOT BE COPIED OR DISCLOSED WITHOUT WRITTEN CONSENT

Type: Cable 182 RF
CABLE 182 RF
Drawing Number:
Sheet 1 of 1
Drawing © E and O E