

CABLE 159 RF: RF CABLE ASSEMBLY, MMCX RIGHT ANGLE PLUG + RP SMA BULKHEAD JACK + RG178 CABLE

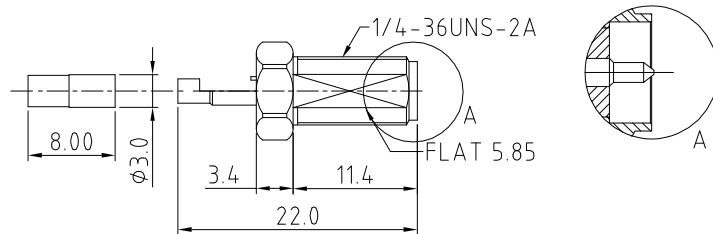
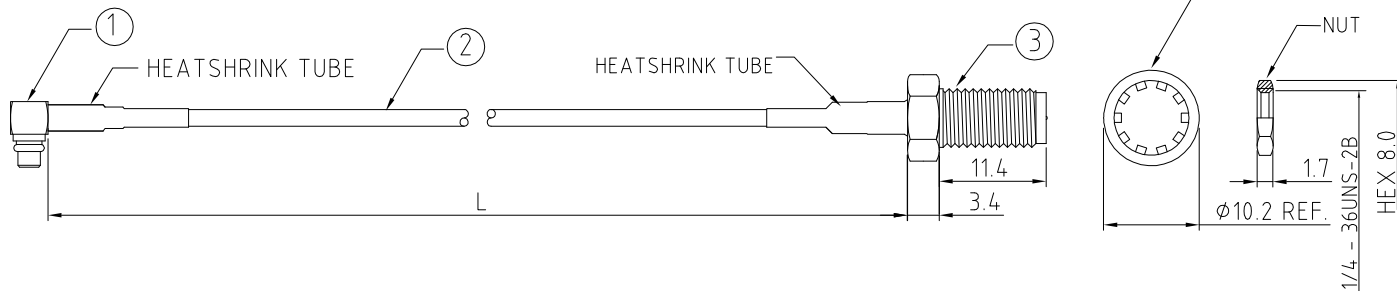
SPECIFICATIONS

1. MMCX RIGHT ANGLE PLUG, P/N: C05BA3F178001
2. RG178 COAXIAL CABLE, COLOR: BROWN.
3. RP SMA ST BULKHEAD JACK, P/N: C20ABWS178003B, GOLD

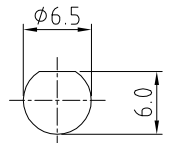
NOTES:

1. THE ORIENTATION OF CONNECTORS ON DRAWING IS FOR REFERENCE ONLY, IF THE ORDER IS LEFT BLANK THE CONNECTOR WILL NOT HAVE FIXED ORIENTATION.
2. FIXED ORIENTATION IS POSSIBLE FOR CABLE LENGTH 50MM TO 220MM. PLEASE SPECIFY THE FIXED ORIENTATIONS FROM THE ORDER CODE (F1, F2, ETC)
3. CONTACT GRAD CONN IF THE ORIENTATION YOU REQUIRE IS NOT SHOWN.
4. WORKING FREQUENCY RANGE: DC-3GHz.

**USAGE PRECAUTIONS: CABLES USING 'MICRO' COAX ARE DELICATE:**  
 (i) HANDLE WITH CARE.  
 (ii) DO NOT TWIST; APPLY EXCESSIVE FORCES OR SHARP BENDS TO THE CABLE. DO NOT FORCEFULLY DEFORM WIRES.  
 (iii) CONSULT CONNECTOR MANUFACTURER'S DATASHEETS FOR DETAILED NOTES ON HANDLING INSTRUCTIONS.



RECOMMENDED SMA MOUNTING HOLE



HOW TO ORDER

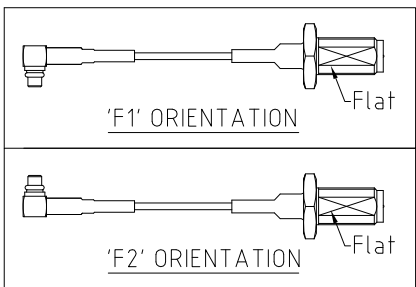
CABLE 159 RF - XXXX - X - XX - 1

"L" LENGTH IN MM  
 eg: 100MM = 0100  
 (MIN. = 0050, MAX. = 2000)  
 STANDARD = 0100, 0150, 0200  
 Tolerance: <50mm : ±2mm.  
 51-200mm: ±5mm.  
 201-500mm: ±7mm.  
 >501mm: ±10mm.

WASHER AND NUT OPTIONS:  
 BLANK = SEPERATELY PACKED (STANDARD)  
 A = ASSEMBLED WITH CONNECTOR

CABLE SIZE:  
 1 = RG178 CABLE, BROWN

ORIENTATION OPTIONS:  
 BLANK = DOES NOT HAVE A FIXED ORIENTATION  
 F1 = MMCX CONNECTION DOWN (L=50-220MM)  
 F2 = MMCX CONNECTION UP (L=50-220MM)  
 (SEE NOTES 1, 2, 3 AND DIAGRAMS FOR MORE INFORMATION)



Scale: NTS	THIRD ANGLE	Unstated X .XX .XXX ANGLES	Tolerances: ±0.2 ±0.1 ±0.05 ±5	Material: SEE NOTE
Drawn: NYW				
App'd: XXX	Title: CABLE ASSEMBLY			NOT TO SCALE
Date: 5 NOV. '13	Revision: 1.0			Unit: mm

© THIS DRAWING IS CONFIDENTIAL AND MUST NOT BE COPIED OR DISCLOSED WITHOUT WRITTEN CONSENT

Type: Cable 159 RF
CABLE 159 RF
Drawing Number:
Sheet 1 of 1
Drawing © E and O E