

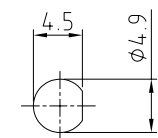
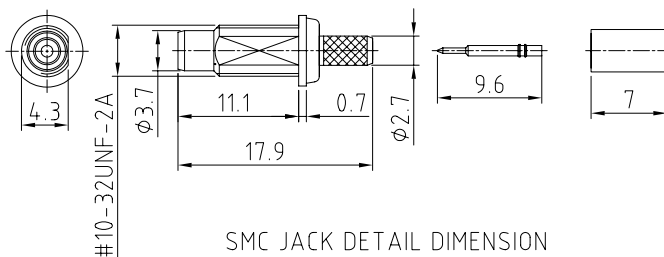
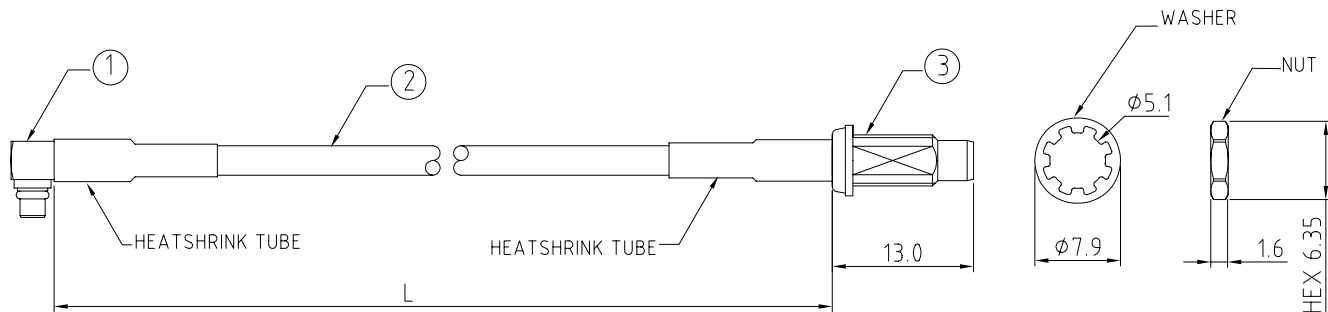
CABLE 100 RF: RF CABLE ASSEMBLY, MMCX R/A PLUG + SMC BULKHEAD JACK + RG174 CABLE

SPECIFICATIONS :

1. MMCX RIGHT ANGLE PLUG (C05BA3F174001), GOLD
2. RG174 COAXIAL CABLE, BLACK
3. SMC BULKHEAD JACK (C14AB3F174006B), GOLD

NOTES:

1. THE ORIENTATION OF CONNECTORS ON DRAWING IS FOR REFERENCE ONLY, IF THE ORDER IS LEFT BLANK THE CONNECTOR WILL NOT HAVE FIXED ORIENTATION.
2. FIXED ORIENTATION IS POSSIBLE FOR CABLE LENGTH 25MM TO 220MM. PLEASE SPECIFY THE FIXED ORIENTATIONS FROM THE ORDER CODE (F1, F2, ETC)
3. CONTACT GRAD CONN IF THE ORIENTATION YOU REQUIRE IS NOT SHOWN.
4. WORKING FREQUENCY RANGE: DC 0-3GHz.



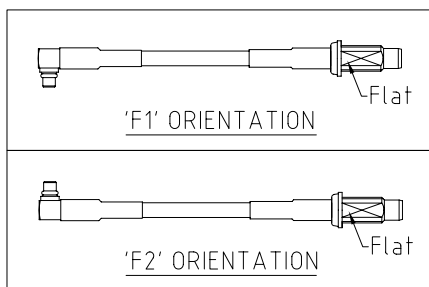
HOW TO ORDER

CABLE 100 RF - X X X X - XX - X

"L" LENGTH IN MM
 eg: 100MM = 0100
 (MIN. = 0050, MAX. = 2000)
 STANDARD = 0100, 0150, 0200)
 Tolerance: <50mm : ±2mm.
 51-200mm : ±5mm.
 201-500mm : ±7mm.
 >501mm : ±10mm.

WASHER AND NUT OPTIONS:
 BLANK = SEPERATELY PACKED (STANDARD)
 A = ASSEMBLED WITH CONNECTOR

BLANK = DOES NOT HAVE A FIXED ORIENTATION
 F1 = MMCX CONNECTION DOWN (L=25-220MM)
 F2 = MMCX CONNECTION UP (L=25-220MM)
 (SEE NOTES 1, 2, 3 AND DIAGRAMS FOR MORE INFORMATION)



REV. DATE & DRN
 10 19/04/10 - NYW RELEASE
 11 02/06/10 - NYW RELEASE
 ADD NOTES 4.

| | | | | |
|-----------------|----------------------|---|--|----------------------|
| Scale: NTS | THIRD ANGLE | Unstated .X .XX .XXX ANGLES | Tolerances: ±0.2 ±0.1 ±0.05 ±5 | Material SEE NOTE |
| Drawn: NYW | | | | |
| App'd: XXX | Title CABLE ASSEMBLY | | | NOT TO SCALE |
| Date: 2 JUN '10 | Revision: 1.1 | | | Unit: mm |

THIS DRAWING IS CONFIDENTIAL AND MUST NOT BE COPIED OR DISCLOSED WITHOUT WRITTEN CONSENT

| |
|---------------------|
| Type: Cable 100 RF |
| CABLE 100 RF |
| Drawing Number: |
| Sheet 1 of 1 |
| Drawing © E and O E |