



CABLE 076 RF: RF CABLE ASSEMBLY, I-PEX MHF PLUG + SMA STRAIGHT PLUG+ MULTIPLE CABLE SIZES

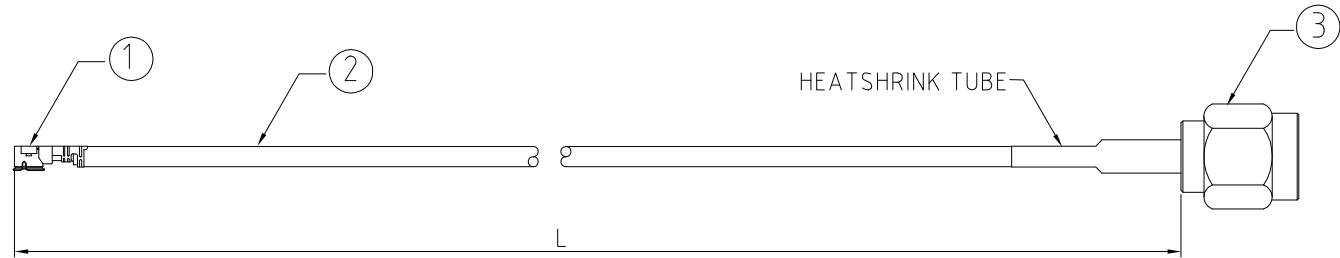
SPECIFICATIONS

1. I-PEX MHF PLUG, GOLD. P/N:
FOR RG178 CABLE: 20351-112R-37.
FOR ϕ 1.13MM CABLE: 20278-112R-13.
2. COAXIAL CABLE, SEE PART NUMBER FOR DETAIL.
3. SMA ST PLUG, GOLD. P/N:
FOR RG178 CABLE: C01AA31178004.
FOR ϕ 1.13MM CABLE: C01AA31113004.

USAGE PRECAUTIONS: CABLES USING 'MICRO' COAX ARE DELICATE:
 (i) HANDLE WITH CARE.
 (ii) DO NOT TWIST; APPLY EXCESSIVE FORCES OR SHARP BENDS TO THE CABLE. DO NOT FORCEFULLY DEFORM WIRES.
 (iii) CONSULT CONNECTOR MANUFACTURER'S DATASHEETS FOR DETAILED NOTES ON HANDLING INSTRUCTIONS.

NOTES:

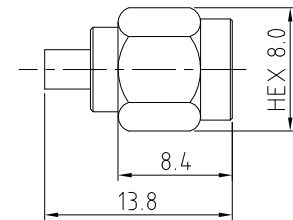
1. WORKING FREQUENCY RANGE: DC~6GHz



HOW TO ORDER
 CABLE 076 RF - X X X - X

"L" LENGTH IN MM
 eg: 100MM = 100
 (MIN. 025-MAX.400
 STANDARD = 100, 150, 200)
 Tolerance: <50mm : \pm 2mm.
 51-200mm: \pm 5mm.
 201-400mm: \pm 7mm.

CABLE SIZE OPTIONS:
 BLANK = RG178 CABLE, BROWN
 1 = ϕ 1.13MM CABLE, GRAY



SMA PLUG DETAIL DIMENSION

REV. DATE & DRN	10 25/07/09 - CHC RELEASE
	11 02/11/12 - NYW
	12 18/09/13 - NYW
	13 21/09/15 - NYW

Scale: NTS	THIRD ANGLE	Unstated X .XX .XXX ANGLES	Tolerances: \pm 0.2 \pm 0.1 \pm 0.05 \pm 5	Material SEE NOTE
Drawn: CHC				
App'd: XXX	Title: CABLE ASSEMBLY	NOT TO SCALE		
Date: 21 SEP. '15	Revision: 13	Unit: mm		

www.gradconn.com

© THIS DRAWING IS CONFIDENTIAL AND MUST NOT BE COPIED OR DISCLOSED WITHOUT WRITTEN CONSENT

Type: Cable 076 RF
CABLE 076 RF
Drawing Number:
Sheet 1 of 1
Drawing © E and O E