

CABLE 044 RF: RF CABLE ASSEMBLY, I-PEX MHF + RP SMA BULKHEAD JACK + MULTIPLE SIZE CABLES - 3GHz

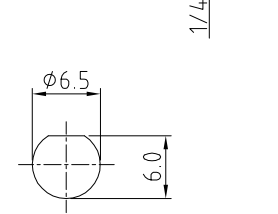
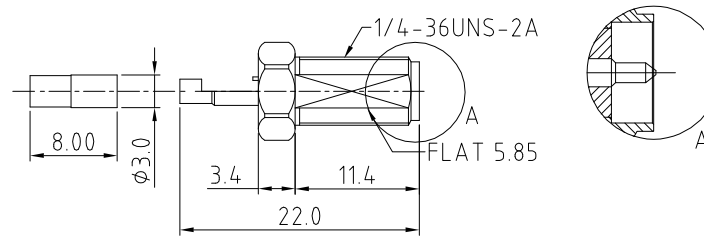
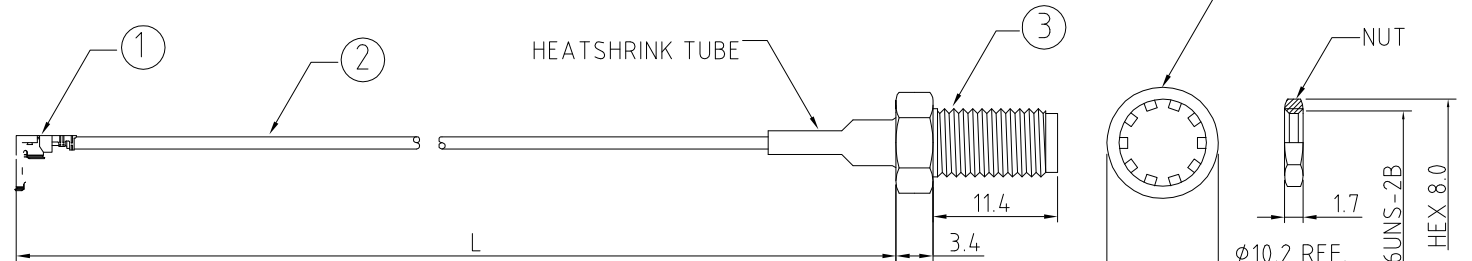
SPECIFICATIONS

1. I-PEX MHF PLUG :
FOR $\phi 1.13$ CABLE: 20278-112R-13
FOR RG178 CABLE: 20278-112R-18
FOR $\phi 1.37$ CABLE: 20351-112R-37
2. SEE CABLE SIZE OPTIONS.
3. RP SMA ST BULKHEAD JACK(C20ABWS178003B), GOLD

NOTES:

1. THE ORIENTATION OF CONNECTORS ON DRAWING IS FOR REFERENCE ONLY, IF THE ORDER CODE IS LEFT BLANK THE CONNECTOR WILL NOT HAVE FIXED ORIENTATION.
2. FIXED ORIENTATION IS POSSIBLE FOR CABLE LENGTH 25MM TO 220MM. PLEASE SPECIFY THE FIXED ORIENTATIONS FROM THE ORDER CODE (F1, F2, ETC)
3. CONTACT GRAD CONN IF THE ORIENTATION YOU REQUIRE IS NOT SHOWN.
4. WORKING FREQUENCY RANGE: DC-3GHz Δ

USAGE PRECAUTIONS: CABLES USING 'MICRO' COAX ARE DELICATE:
(i) HANDLE WITH CARE.
(ii) DO NOT TWIST; APPLY EXCESSIVE FORCES OR SHARP BENDS TO THE CABLE. DO NOT FORCEFULLY DEFORM WIRES.
(iii) CONSULT CONNECTOR MANUFACTURER'S DATASHEETS FOR DETAILED NOTES ON HANDLING INSTRUCTIONS.



SMA JACK DETAIL DIMENSION

RECOMMENDED SMA MOUNTING HOLE

HOW TO ORDER

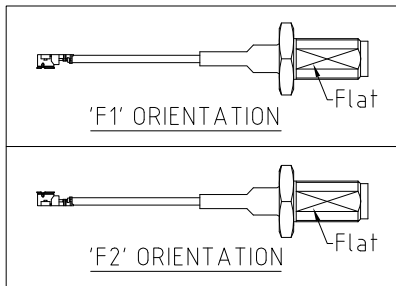
CABLE 044 RF - X X X - X - XX - X

"L" LENGTH IN MM
eg: 100MM = 0100
(MIN. 025-MAX.400)
STANDARD = 100, 150, 200
Tolerance: <50mm : ± 2 mm.
51-200mm: ± 5 mm.
201-400mm: ± 7 mm.

WASHER AND NUT OPTIONS:
BLANK = SEPERATELY PACKED (STANDARD)
A = ASSEMBLED WITH CONNECTOR

CABLE SIZE OPTIONS: Δ
0 = $\phi 1.13$ MM CABLE, COLOR: GRAY
1 = RG178 CABLE, COLOR: BROWN
 $\Delta 2$ = $\phi 1.37$ MM CABLE, COLOR: BLACK
3 = $\phi 1.13$ MM LOW LOSS CABLE, COLOR: GRAY

Δ ORIENTATION OPTIONS:
BLANK = DOES NOT HAVE A FIXED ORIENTATION
F1 = I-PEX CONNECTION DOWN (L=25-220MM)
F2 = I-PEX CONNECTION UP (L=25-220MM)
(SEE NOTES 1, 2, 3 AND DIAGRAMS FOR MORE INFORMATION)



10 05/05/08 - NYW RELEASE
12 28/11/08 - NYW CHANGE IPEX P/N TO 20278-112R-13 (HALOGEN FREE)
13 08/12/08 - NYW ADD WASHER AND NUT OPTIONS
14 26/08/09-FCY ADD WORKING FREQUENCY RANGE
15 16/04/11 - NYW ADD CABLE SIZE 1 OPTION, ADD ORIENTATION OPTIONS.
16 01/07/13 - NYW ADD CABLE SIZE 2 OPTION.
17 18/09/13 - NYW AMEND IPEX RG178 P/N
18 21/08/15 - NYW ADD CABLE OPTION 3.

Scale: NTS	THIRD ANGLE	Unstated X .XX .XXX ANGLES	Tolerances: ± 0.2 ± 0.1 ± 0.05 ± 5	Material: SEE NOTE
Drawn: NYW				
App'd: XXX	Title: CABLE ASSEMBLY	NOT TO SCALE		
Date: 21 AUG. '15	Revision: 18	Unit: mm		

www.gradconn.com

THIS DRAWING IS CONFIDENTIAL AND MUST NOT BE COPIED OR DISCLOSED WITHOUT WRITTEN CONSENT

Type: Cable 044 RF
CABLE 044 RF
Drawing Number:
Sheet 1 of 1
Drawing © E and O E