



CAB448RF: SMA S/T MALE PLUG + S/S SMA FEMALE STRAIGHT BULKHEAD JACK W/O-RING RATED TO IP68/69K + RG178 CABLE

SPECIFICATIONS :

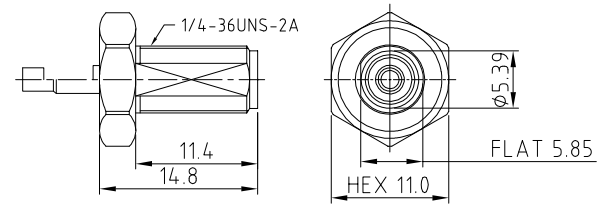
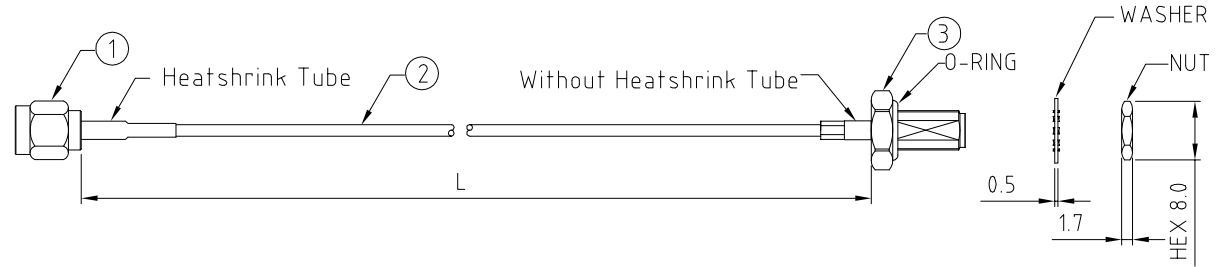
1. SMA STRAIGHT PLUG, GOLD PLATED, P/N: RFCT-SMA022-M78.
2. COAXIAL CABLE, SEE P/N OPTIONS FOR DETAIL.
3. SMA STRAIGHT BULKHEAD JACK W/O-RING, W/SUS303 STAINLESS STEEL BODY, TESTED TO IP68/69K, P/N: RFCT-SMA061-F78 (WITH SILICONE O-RING) OR RFCT-SMA061-F78-1 (WITH EPDM O-RING).

ENVIRONMENTAL:

- A. BULKHEAD MOUNTED CONNECTOR (RFCT-SMA061-F78) TESTED TO THE FOLLOWING SPECIFICATION:
- i. IP6X - DUST TIGHT - NO PARTICLE INGRESS.
 - ii. IPX8 WATERPROOF FOR 48 HOURS AT 1 METER UNDERWATER.
 - iii. IPX9K WATER SPRAY, 14-16L PER MINUTE, AT 8,000-10,000 KPA, AT 100-150MM DISTANCE FOR 30 SECONDS.

NOTES:

1. WORKING FREQUENCY RANGE: DC-3GHz.
2. OPERATING TEMPERATURE: -40°C TO +125°C
3. IMPEDANCE: 50 OHM
4. PLEASE USE THE RECOMMENDED TORQUE FORCES FOR STAINLESS STEEL CONNECTORS. THIS IS PUBLISHED ON GRADCONN.COM RESOURCES PAGE.



SMA JACK DETAIL DRAWING

HOW TO ORDER

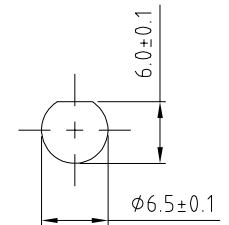
CAB448RF - X X X X - X - 1 - X

"L" LENGTH IN MM:
 eg: 100MM = 0100
 (MIN. 0050-MAX.2000
 STANDARD = 0100, 0150, 0200)
 Tolerance: 50mm: ±2mm.
 51-200mm: ±5mm.
 201-500mm: ±7mm.
 >501mm: ±10mm.

CABLE SIZE:
 1 = RG178 CABLE, COLOR: BROWN.

WASHER AND NUT OPTIONS:
 BLANK = SEPARATELY PACKED (STANDARD)
 A = ALL ASSEMBLED WITH CONNECTOR

O-RING MATERIAL OPTIONS:
 S = SILICONEE, RED
 E = EPDM, BLACK (STANDARD)



RECOMMENDED SMA MOUNTING HOLE

REV. DATE & DRN
 10 25/11/20 - NYW RELEASE
 11 11/03/21 - NYW
 ADD NBR O-RING OPTION.
 12 21/12/22 - NYW
 ADD NOTE 5
 13 REMOVE NBR O-RING OPTION

Scale: NTS	THIRD ANGLE	Unstated .X .XX .XXX ANGLES	Tolerances: N/A N/A N/A N/A
Drawn: NYW			
App'd: XXX	Title: CABLE ASSEMBLY		
Date: 17 MAY '23	Revision: 13	Unit: mm	

IP67/68 Rated Cables

www.gradconn.com

© THIS DRAWING IS CONFIDENTIAL AND MUST NOT BE COPIED OR DISCLOSED WITHOUT WRITTEN CONSENT

Drawing Number: CAB448RF	
Sheet 1	of 1
Drawing ©	E and O E