

CAB422RF: I-PEX MHF 4L LK PLUG + RP SMA STRAIGHT BULKHEAD JACK WITH O-RING RATED TO IP67/68 + 1.37MM CABLE, 6GHz

SPECIFICATIONS :

1. I-PEX MHF 4L LK PLUG, P/N:20632-001R-37.
LOCK: 3615-000
2. 1.37MM COAXIAL CABLE, COLOR: BLACK
3. RP SMA STRAIGHT BULKHEAD JACK WITH O-RING RATED TO IP67/68, P/N: RFCT-SMA071-F78.

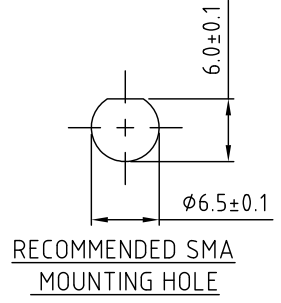
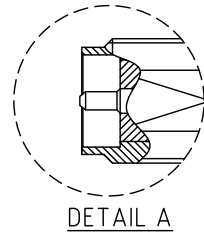
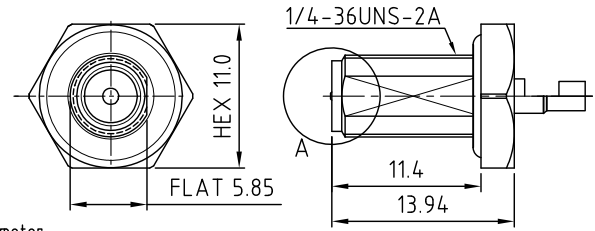
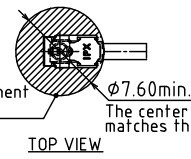
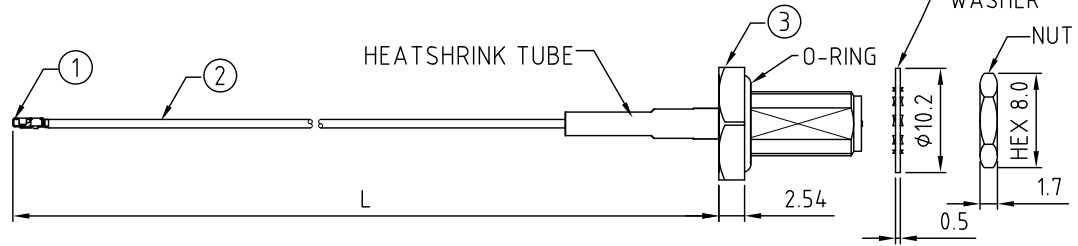
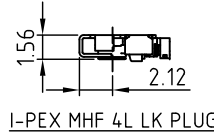
USAGE PRECAUTIONS: CABLES USING 'MICRO' COAX ARE DELICATE:
 (i) HANDLE WITH CARE.
 (ii) DO NOT TWIST; APPLY EXCESSIVE FORCES OR SHARP BENDS TO THE CABLE. DO NOT FORCEFULLY DEFORM WIRES.
 (iii) CONSULT CONNECTOR MANUFACTURER'S DATASHEETS FOR DETAILED NOTES ON HANDLING INSTRUCTIONS.

ENVIRONMENTAL:

- A. BULKHEAD MOUNTED CONNECTOR (RFCT-SMA071-F78) RATED TO THE FOLLOWING SPECIFICATION:
- i. IP6X - DUST TIGHT - NO PARTICLE INGRESS.
 - ii. IPX7 WATERPROOF FOR 30 MINUTES UP TO 1 METER UNDERWATER.
 - iii. IPX8 WATERPROOF FOR 48 HOURS AT 1 METER UNDERWATER.

NOTES:

1. THE ORIENTATION OF CONNECTORS ON DRAWING IS FOR REFERENCE ONLY, IF THE ORDER IS LEFT BLANK THE CONNECTOR WILL NOT HAVE FIXED ORIENTATION.
2. FIXED ORIENTATION IS SUGGESTED FOR CABLE LENGTH 50MM TO 100MM. PLEASE SPECIFY THE FIXED ORIENTATIONS FROM THE ORDER CODE (F1, F2, ETC)
3. CONTACT GRADCONN IF THE ORIENTATION YOU REQUIRE IS NOT SHOWN.
4. WORKING FREQUENCY RANGE: DC-6GHz.
5. OPERATING TEMPERATURE: -40°C~+85°C.
6. IMPEDANCE: 50 Ohm.



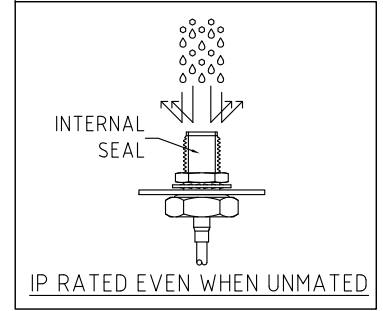
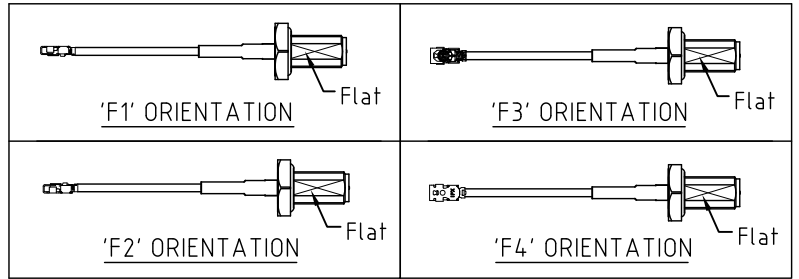
HOW TO ORDER

CAB422RF - X X X X - X X - X - 1

"L" LENGTH IN MM:
 eg: 100MM = 0100
 (MIN. 0050-MAX.0400)
 STANDARD = 0100, 0150, 0200
 TOLERANCE: 50-200mm: ±5mm.
 201-400mm: ±7mm.

CABLE SIZE:
 1 = φ1.37MM CABLE, COLOR: BLACK
 WASHER AND NUT OPTIONS:
 BLANK = SEPARATELY PACKED (STANDARD)
 A = ASSEMBLED WITH CONNECTOR

ORIENTATION OPTIONS:
 BLANK = DOES NOT HAVE A FIXED ORIENTATION
 F1 = MHF CONNECTION DOWN (L=50-200MM)
 F2 = MHF CONNECTION UP (L=50-200MM)
 F3 = MHF CONNECTION AND D FLAT SAME ORIENTATION (L=50-200MM)
 F4 = MHF CONNECTION AND D FLAT OPPOSITE ORIENTATION (L=50-200MM)
 (SEE NOTES 1, 2, 3 AND DIAGRAMS FOR MORE INFORMATION)



REV. DATE & DRN
 TO: 06/09/20 - NYW RELEASE
 11 05/07/21 - NYW
 12 05/07/21 - NYW
 13 05/07/21 - NYW
 14 05/07/21 - NYW
 15 05/07/21 - NYW
 16 05/07/21 - NYW
 17 05/07/21 - NYW
 18 05/07/21 - NYW
 19 05/07/21 - NYW
 20 05/07/21 - NYW
 21 05/07/21 - NYW
 22 05/07/21 - NYW
 23 05/07/21 - NYW
 24 05/07/21 - NYW
 25 05/07/21 - NYW
 26 05/07/21 - NYW
 27 05/07/21 - NYW
 28 05/07/21 - NYW
 29 05/07/21 - NYW
 30 05/07/21 - NYW
 31 05/07/21 - NYW
 32 05/07/21 - NYW
 33 05/07/21 - NYW
 34 05/07/21 - NYW
 35 05/07/21 - NYW
 36 05/07/21 - NYW
 37 05/07/21 - NYW
 38 05/07/21 - NYW
 39 05/07/21 - NYW
 40 05/07/21 - NYW
 41 05/07/21 - NYW
 42 05/07/21 - NYW
 43 05/07/21 - NYW
 44 05/07/21 - NYW
 45 05/07/21 - NYW
 46 05/07/21 - NYW
 47 05/07/21 - NYW
 48 05/07/21 - NYW
 49 05/07/21 - NYW
 50 05/07/21 - NYW
 51 05/07/21 - NYW
 52 05/07/21 - NYW
 53 05/07/21 - NYW
 54 05/07/21 - NYW
 55 05/07/21 - NYW
 56 05/07/21 - NYW
 57 05/07/21 - NYW
 58 05/07/21 - NYW
 59 05/07/21 - NYW
 60 05/07/21 - NYW
 61 05/07/21 - NYW
 62 05/07/21 - NYW
 63 05/07/21 - NYW
 64 05/07/21 - NYW
 65 05/07/21 - NYW
 66 05/07/21 - NYW
 67 05/07/21 - NYW
 68 05/07/21 - NYW
 69 05/07/21 - NYW
 70 05/07/21 - NYW
 71 05/07/21 - NYW
 72 05/07/21 - NYW
 73 05/07/21 - NYW
 74 05/07/21 - NYW
 75 05/07/21 - NYW
 76 05/07/21 - NYW
 77 05/07/21 - NYW
 78 05/07/21 - NYW
 79 05/07/21 - NYW
 80 05/07/21 - NYW
 81 05/07/21 - NYW
 82 05/07/21 - NYW
 83 05/07/21 - NYW
 84 05/07/21 - NYW
 85 05/07/21 - NYW
 86 05/07/21 - NYW
 87 05/07/21 - NYW
 88 05/07/21 - NYW
 89 05/07/21 - NYW
 90 05/07/21 - NYW
 91 05/07/21 - NYW
 92 05/07/21 - NYW
 93 05/07/21 - NYW
 94 05/07/21 - NYW
 95 05/07/21 - NYW
 96 05/07/21 - NYW
 97 05/07/21 - NYW
 98 05/07/21 - NYW
 99 05/07/21 - NYW
 100 05/07/21 - NYW

Scale: NTS	THIRD ANGLE	Unstated Tolerances:
Drawn: CC		X N/A XX N/A XXX N/A ANGLES N/A
App'd: XXX	Title CABLE ASSEMBLY	
Date: 20 JAN. '24	Revision: 1.2	Unit: mm

IP Rated RF Products

www.gradconn.com

Drawing Number:	CAB422RF
Sheet 1 of 1	
Drawing	E and O E