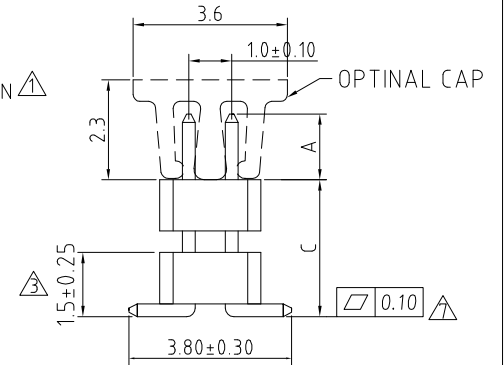
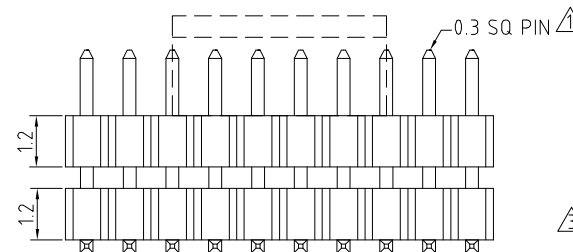
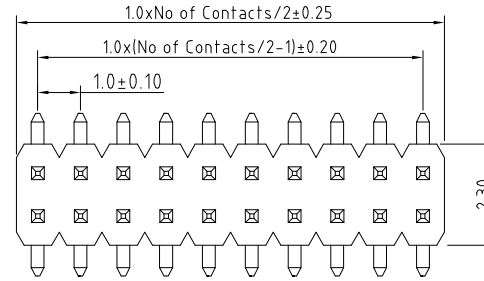
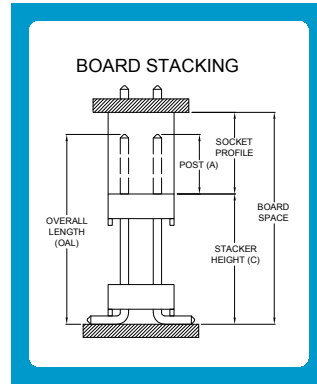


BB02-YH:- 1.00mm x 1.0mm (0.039" x 0.309") PIN HEADER, DUAL ROW, STRAIGHT, SMT TYPE, 04 TO 80 CONTACTS

SPECIFICATIONS

- CURRENT RATING: 1AMP
- INSULATOR RESISTANCE: 500 MEGOHMS MIN.
- DIELECTRIC WITHSTANDING: AC 600 V
- CONTACT RESISTANCE: 20m OHMS MAX.
- OPERATING TEMPERATURE: -40°C TO +105°C
- CONTACT MATERIAL: BRASS
- INSULATOR MATERIAL: THERMOPLASTIC, UL 94V-0
- STANDARD: NYLON 6T
- PLATING: GOLD OR TIN OVER 30-50U" NICKEL
- SOLDERABILITY - IR REFLOW: 260°C FOR 10 SEC
- MANUAL SOLDER: 350°C FOR 3-5 SEC

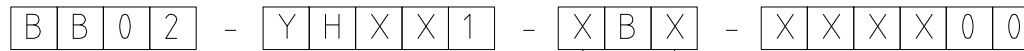


MATES WITH: - BB02-WA

NOTES:

- MAX. OAL (OVERALL PIN LENGTH A+C) = 22mm.
- PARTS WITH SMALL PIN NUMBERS MAY BE PACKED IN BOX INSTEAD OF TUBE.

HOW TO ORDER



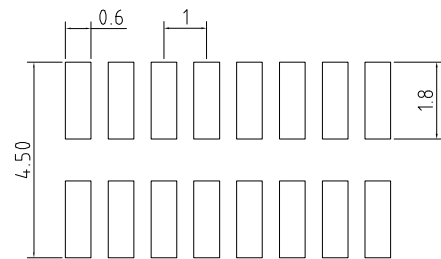
NO. OF CONTACTS:
04 to 80

CONTACT PLATING OPTIONS:
 K = GOLD FLASH (STANDARD)
 P = 10U" GOLD OVERALL
 Q = 15U" GOLD OVERALL
 R = 30U" GOLD OVERALL
 T = BRIGHT TIN
 M = MATT TIN

PACKAGING OPTIONS:
 3 = TUBE
 5 = TUBE + CAP
 6 = TAPE & REEL
 8 = TAPE & REEL + CAP
 (see Note 3)

PIN LENGTH A (1/10mm)
 SPECIFY PIN LENGTH
 STANDARD = 20 = 2.0mm
 MINIMUM = 10 = 1.0mm
 MAXIMUM = 150 = 15.0mm
 TOL.: ±0.25mm

PIN LENGTH C (1/10mm)
 SPECIFY PIN LENGTH
 IE 25 = 2.5mm
 MINIMUM = 27 = 2.7mm
 MAXIMUM = SEE NOTES 2.
 TOL.: ±0.25mm



RECOMMENDED PCB SMT LAYOUT

LONGER PIN LENGTH REQUIRED?
 If pin length required is longer than 9.9mm (99), then use a '/' to separate the numbers.
 Example: A=6.0mm, C=12.5mm, mark as 60 / 125 / 00.

REV.	DATE & DRN
10	30/06/05-NYW - RELEASE
11	21/09/05-NYW - AMEND PIN DIAMETER
12	24/07/06 - NYW - DRAWING MODIFICATION
13	16/05/07 - NYW - ADD MIN. A LENGTH
14	06/06/08 - CHC - ADD LENGTH 3 (IN DIAL PLATING MODIFICATION)
15	17/07/08 - NYW - ADD NOTE 1
16	23/07/08 - NYW - CHANGE PLATING OPTIONS.
17	09/12/08 - CHC - ADD SOLDER LEAD CD-PLANARITY.
18	10/12/08 - CHC - AMEND PLATING.
19	24/12/08 - NYW - DRAWING MODIFICATION.
20	23/09/13 - NYW - REMOVE NOTE 1.
21	18/03/14 - NYW - ADD NOTE 3.

Scale:	8:1	THIRD ANGLE	Unstated Tolerances: X. ± 0.30 X ± 0.25 XX ± 0.15 XXX ± 0.10
Drawn:	CHC		
App'd:	XXX	Title: PIN HEADER	Material: SEE NOTE
Date:	18 MAR '14	Revision: 2.1	NOT TO SCALE
			Unit: mm

www.gradconn.com

THIS DRAWING IS CONFIDENTIAL AND MUST NOT BE COPIED OR DISCLOSED WITHOUT WRITTEN CONSENT

Type	BB02-YH
	BB02-YH
Drawing Number:	
Sheet	1 of 1
Drawing	© E and O E