

BB02-US: 3.96mm (0.156") SOCKET, STRAIGHT, THROUGH HOLE, SINGLE ROW - 02 to 24 CONTACTS

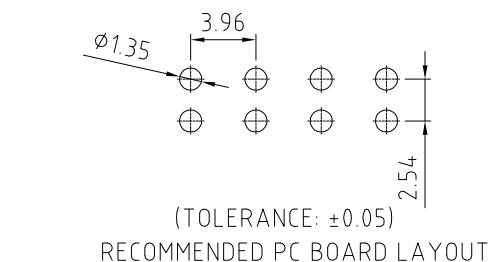
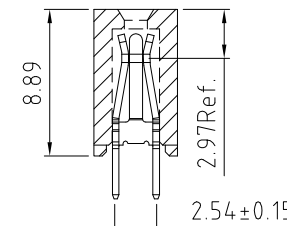
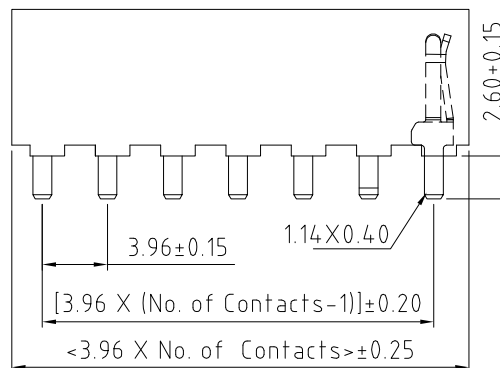
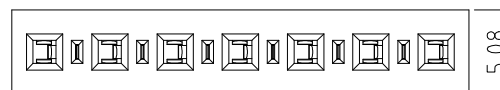
SPECIFICATIONS

CURRENT RATING 7.9 AMP
 INSULATOR RESISTANCE 1000 MEGOHMS MIN. Δ
 CONTACT RESISTANCE 30m OHMS MAX.
 DIELECTRIC WITHSTANDING 1000V AC/DC Δ
 OPERATING TEMPERATURE -40°C TO +105°C Δ
 CONTACT MATERIAL PHOSPHOR BRONZE
 INSULATOR MATERIAL LCP+30% G/F, UL 94V-0
 PLATING: 100U" MATTE TIN OVER 30-50U" NICKEL
 SOLDERABILITY IR REFLOW: 280°C FOR 10 SEC
 WAVE: 250°C FOR 5-10 SEC
 MANUAL SOLDER: 380°C FOR 3-5 SEC

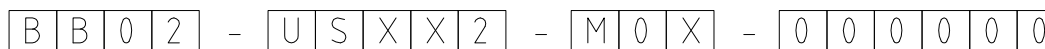
MATES WITH: - BB02-UG BB02-UK
 BB02-UH
 BB02-UJ

NOTES:

1. GOLD FLASH PLATING IS AVAILABLE UPON REQUEST, PLEASE CONTACT US FOR MORE INFORMATION.
2. RECOMMENDED MATING PIN LENGTH: 5.0MM.



HOW TO ORDER



NO. OF CONTACTS:
02 TO 24

CONTACT PLATING OPTIONS:
M = MATTE TIN (STANDARD)

PACKAGE OPTIONS:
3 = TUBE / BOX
5 = TUBE + CAP
6 = TAPE & REEL
8 = TAPE & REEL + CAP

REV.	DATE	BY	DESCRIPTION
10	3/1/08	CHC	RELEASE
11	25/02/08	NYW	DRAWING MODIFICATION
12	05/03/09	NYW	REMOVE OTHER PLATING AND ADD NOTES 1
13	26/07/10	NYW	ADD CONTACT DETAIL AND ADD NOTES 2
14	22/07/14	NYW	AMEND SPECIFICATION

Scale:	3:1	THIRD ANGLE	Unstated Tolerances: X ± 0.30 X ± 0.25 XX ± 0.15 XXX ± 0.10	Material	SEE NOTE
Drawn:	CHC				
App'd:	XXXX	Title	SOCKET		NOT TO SCALE
Date:	22 JUL '14	Revision:	14	Unit:	mm

www.gradconn.com

THIS DRAWING IS CONFIDENTIAL AND MUST NOT BE COPIED OR DISCLOSED WITHOUT WRITTEN CONSENT

Type:	BB02-US
Drawing Number:	BB02-US
Sheet	1 of 1
Drawing	© E and O E