

BB02-KU :- 2.54mm X 2.54mm (0.1" X 0.1") SMD FEMALE HEADER, DUAL ROW - 04 TO 80 CONTACTS, DUAL ENTRY

SPECIFICATIONS

CURRENT RATING	3 AMPS
INSULATOR RESISTANCE	1000 MEGOHMS MIN.
CONTACT RESISTANCE	20m OHMS MAX
DIELECTRIC WITHSTANDING	AC 600 V
OPERATING TEMPERATURE	-40°C TO +105°C
CONTACT MATERIAL	PHOSPHOR BRONZE
INSULATOR MATERIAL	THERMOPLASTIC, UL 94V-0
	STANDARD: NYLON-6T

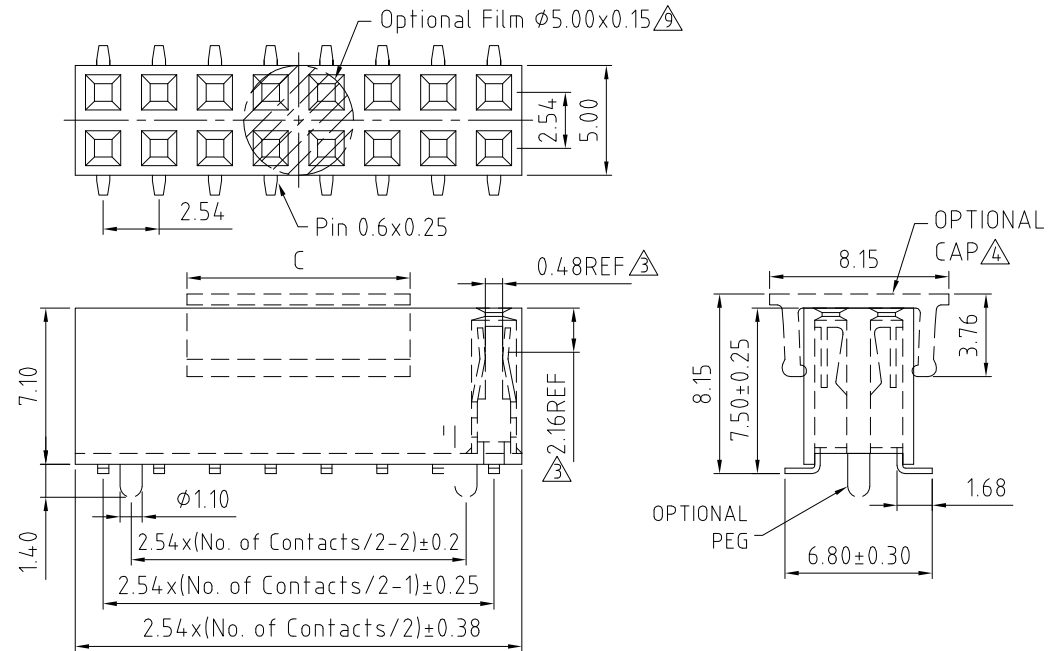
PLATING GOLD, TIN OR SELECTIVE OVER 30~50U" NICKEL  
 SOLDERABILITY IR REFLOW: 260°C FOR 10 SEC  
 MANUAL SOLDER: 350°C FOR 3-5 SEC

NOTES:

1. RECOMMENDED MATING PIN LENGTH FOR TOP ENTRY: 4.5MM.
2. PARTS WITH SMALLER CONTACT NUMBERS MAY BE PACKED IN BOX INSTEAD OF IN TUBE.
3. MAX. NUMBER OF CONTACTS ALLOWED FOR TAPE & REEL PACKAGING: 64 CONTACTS.

MATES WITH: BB02-HE BB02-HQ BB02-TF  
 BB02-HF BB02-HR BB02-TG  
 BB02-HJ BB02-HU BB02-TH  
 BB02-HP BB02-TD

C	PIN #
4.0mm	04~14 pins
10.15mm	16~80 pins



HOW TO ORDER

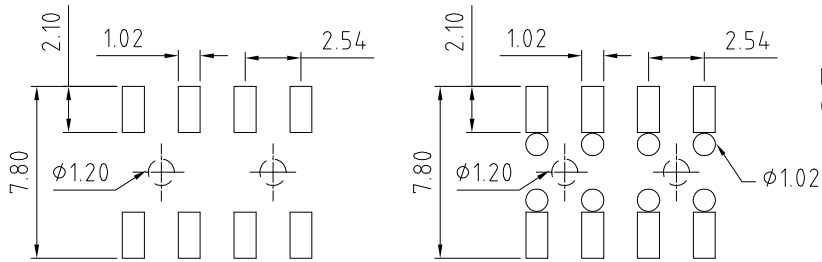


NO. OF CONTACTS:  
04 TO 80

CONTACT PLATING OPTIONS:  
 K = GOLD FLASH (STANDARD)  
 A = 10U" GOLD ON CONTACT/GOLD FLASH ON TAIL  
 B = 15U" GOLD ON CONTACT/GOLD FLASH ON TAIL  
 C = 30U" GOLD ON CONTACT/GOLD FLASH ON TAIL  
 T = BRIGHT TIN  
 M = MATT TIN  
 D = GOLD FLASH ON CONTACT/BRIGHT TIN ON TAIL  
 E = 10U" GOLD ON CONTACT/BRIGHT TIN ON TAIL  
 F = 15U" GOLD ON CONTACT/BRIGHT TIN ON TAIL  
 G = 30U" GOLD ON CONTACT/BRIGHT TIN ON TAIL

PACKAGING OPTIONS:  
 3 = TUBE (standard)  
 4 = TUBE + FILM  
 5 = TUBE + CAP  
 6 = TAPE & REEL  
 7 = TAPE & REEL + FILM  
 8 = TAPE & REEL + CAP  
 (see notes 2 & 3)

LOCATING PEG OPTIONS:  
 A = WITH PEG  
 B = WITHOUT PEG



FOR TOP ENTRY  
RECOMMENDED PCB LAYOUT  
(TOLEARENCE: ±0.05)

FOR BOTTOM ENTRY  
RECOMMENDED PCB LAYOUT  
(TOLEARENCE: ±0.05)

REV. DATE & DRN	10 06/05/06 - NYW RELEASE
11 05/17/05 - NYW	ADD BOTTOM ENTRY LAYOUT
12 09/08/06 - EHC	DRAWING MODIFICATION
13 09/05/07 - NYW	ADD CONTACT GAP DIM.
14 17/09/07 - NYW	ADD NOTES 1.
15 28/05/08 - PN	ADD CAP DRAWING
16 04/02/09 - EHC	ADD MATT TIN PLATING
17 08/07/13 - NYW	DRAWING MODIFICATION
18 31/07/13 - NYW	AMEND SMALL CAP FOR 6-14P
19 06/07/17 - NYW	ADD NOTES 2 & 3
20 06/07/17 - NYW	AMEND FOR DUAL ENTRY
21 06/07/17 - NYW	AMEND MIN. PINH TO 0.4

Scale: 4:1	THIRD ANGLE	Unstated Tolerances: X ± 0.30 X ± 0.25 XX ± 0.15 XXX ± 0.10	Material SEE NOTE
Drawn: CHC			
App'd: XXXX	Title SOCKET		NOT TO SCALE
Date: 5 JAN '17	Revision: 1.9		Unit: mm

www.gradconn.com

Type: BB02-KU
BB02-KU
Drawing Number:
Sheet 1 of 1
Drawing © E and O E