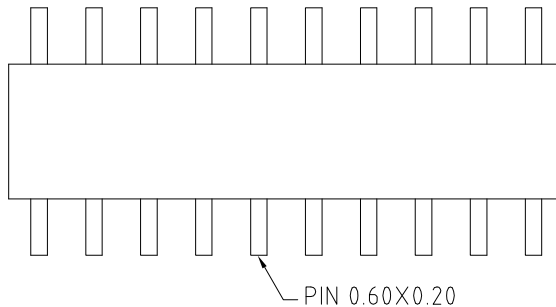


BB02-GY-A :- 2.00mm x 2.00mm (0.079" x 0.079") SOCKET, DUAL ROW, RIGHT ANGLE, SMT TYPE, 04 TO 50 CONTACTS, PROFILE: 4.0MM

SPECIFICATIONS :

CURRENT RATING	2 AMP
INSULATOR RESISTANCE	1000 MEGOHMS MIN.
DIELECTRIC WITHSTANDING	AC 500 V
CONTACT RESISTANCE	20m OHMS MAX.
OPERATING TEMPERATURE	-40°C TO +105°C
CONTACT MATERIAL	PHOSPHOR BRONZE
INSULATOR MATERIAL	THERMO PLASTIC, UL 94V-0 STANDARD NYLON 6T
PLATING	GOLD OR TIN OVER 30~50U" NICKEL
SOLDERABILITY	IR REFLOW: 260°C FOR 10 SEC MANUAL SOLDER: 350°C FOR 3-5 SEC

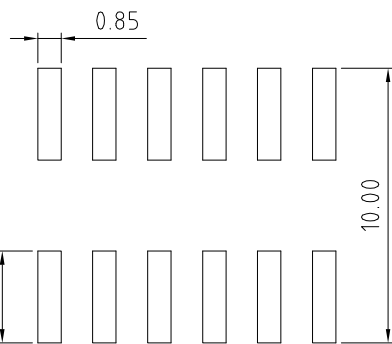
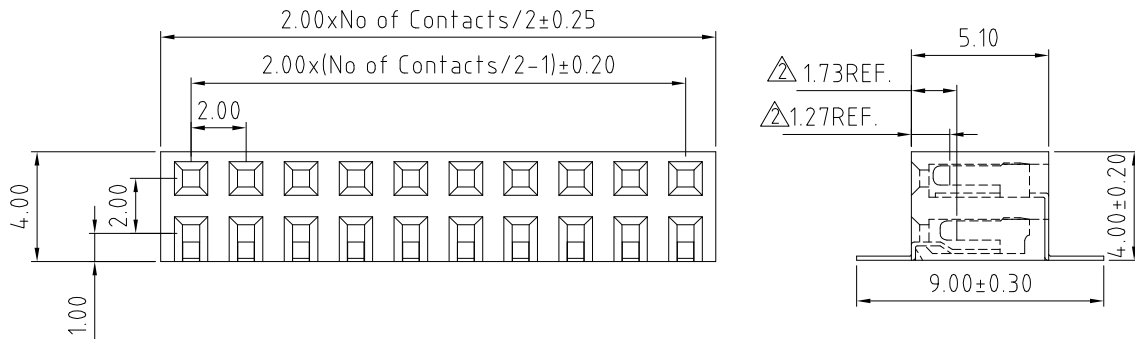


NOTES:

- RECOMMENDED MATING PIN LENGTH: 4.0MM. Δ
- PARTS WITH SMALL NUMBER OF CONTACTS MIGHT BE PACKED IN BOX INSTEAD OF IN TUBE.

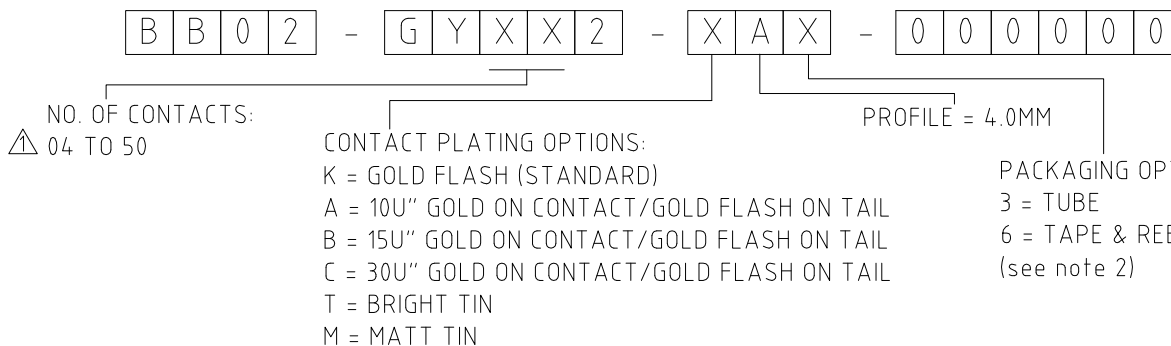
MATES WITH: -

BB02-FA	BB02-FR	BB02-RH
BB02-FD	BB02-FT	BB02-RN
BB02-FE	BB02-FU	
BB02-FG	BB02-RH	



RECOMMENDED PC BOARD HOLE LAYOUT
(TOLERANCE: ±0.05)

HOW TO ORDER



CONTACT PLATING OPTIONS:

- K = GOLD FLASH (STANDARD)
- A = 10U" GOLD ON CONTACT/GOLD FLASH ON TAIL
- B = 15U" GOLD ON CONTACT/GOLD FLASH ON TAIL
- C = 30U" GOLD ON CONTACT/GOLD FLASH ON TAIL
- T = BRIGHT TIN
- M = MATT TIN

PACKAGING OPTIONS:

- 3 = TUBE
- 6 = TAPE & REEL
- (see note 2)

REV.	DATE & DRN	RELEASE
10	24/03/06	NYW
11	27/07/06	NYW
12	02/07/07	NYW
13	03/06/08	CHC
14	05/02/09	CHC
15	30/07/13	NYW

Scale: 5:1	THIRD ANGLE	Unstated Tolerances: X ± 0.30 X ± 0.25 XX ± 0.15 XXX ± 0.10	Material: SEE NOTE
Drawn: CHC			
App'd: XXXX	Title: SOCKET		NOT TO SCALE
Date: 30 OCT. '13	Revision: 15		Unit: mm

www.gradconn.com

THIS DRAWING IS CONFIDENTIAL AND MUST NOT BE COPIED OR DISCLOSED WITHOUT WRITTEN CONSENT

Type: BB02-GY
BB02-GY-A
Drawing Number:
Sheet 1 of 1
Drawing © E and O E