

BB02-2H :- 2.54x2.54mm (0.10"x0.10") PIN HEADER, DUAL ROW, U TYPE, THROUGH HOLE, 02 TO 80 CONTACTS

SPECIFICATIONS

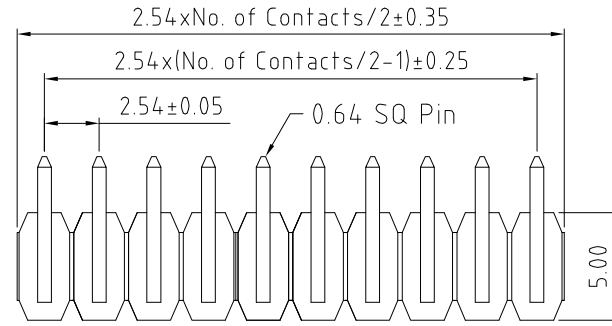
CURRENT RATING	3 AMP
VOLTAGE RATING	250V AC/DC
CONTACT RESISTANCE	20m OHMS MAX..
INSULATOR RESISTANCE	1000 MEGOHMS MIN.
DIELECTRIC WITHSTANDING	500 V AC/MINUTE
OPERATING TEMPERATURE	-40°C TO +105°C
CONTACT MATERIAL	BRASS
INSULATOR MATERIAL	THERMOPLASTIC, UL 94V-0
	STANDARD : NYLON 6T
PLATING	GOLD, TIN, OR SELECTIVE OVER 30-50U" NICKEL
SOLDERABILITY:	IR REFLOW: 260°C FOR 10 SEC
	WAVE: 230°C FOR 5-10 SEC
	MANUAL SOLDER: 350°C FOR 3-5 SEC

NOTES:

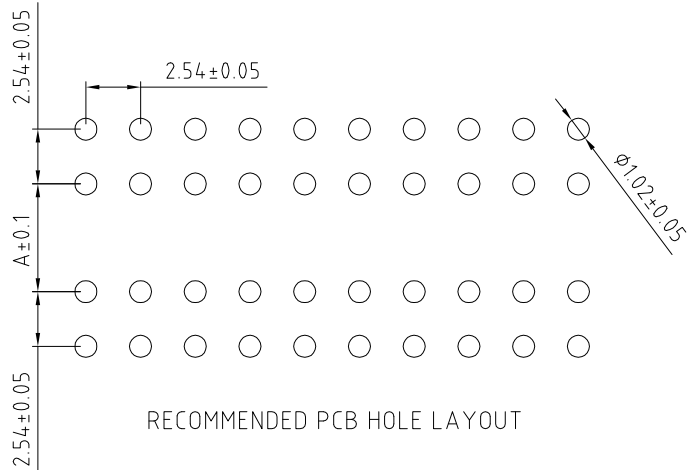
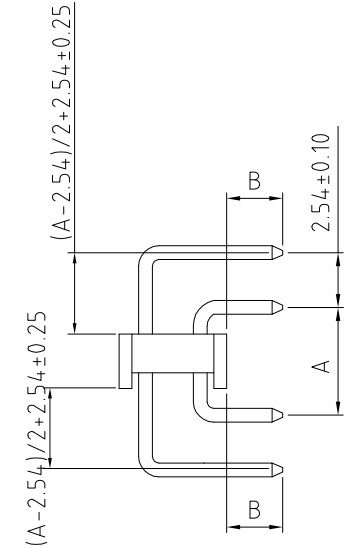
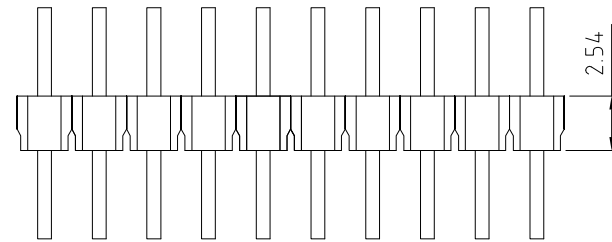
1. LONGER PIN LENGTH MIGHT BE POSSIBLE, PLEASE CONTACT GRAD CONN FOR MORE INFORMATION.

MATES WITH: -

BB02-JM	BB02-KK	BB02-KW
BB02-KA	BB02-KM	BB02-LD
BB02-KD	BB02-KQ	BB02-LE
BB02-KF	BB02-KS	
BB02-KG	BB02-KT	
BB02-KH	BB02-KU	

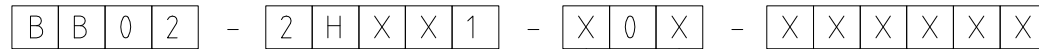


(EXAMPLE OF 20 CONTACTS PART)



RECOMMENDED PCB HOLE LAYOUT

HOW TO ORDER



NO. OF CONTACTS:  
02 TO 80

CONTACT PLATING OPTIONS:  
K = GOLD FLASH (STANDARD)  
T = BRIGHT TIN  
M = MATT TIN  
P = 10U" GOLD ALL OVER  
Q = 15U" GOLD ALL OVER  
R = 30U" GOLD ALL OVER

PACKAGING OPTIONS:  
1 = BAG (STANDARD)  
8 = TAPE & REEL + CAP

PIN LENGTH A (1/10mm)  
SPECIFY PIN LENGTH  
STANDARD = 050 = 5.0mm  
MINIMUM = 050 = 5.0mm  
MAXIMUM = 150 = 15.0mm  
TOL.: ±0.25mm  
(SEE NOTE 1.)

PIN LENGTH B (1/10mm)  
SPECIFY PIN LENGTH  
STANDARD = 026 = 2.6mm  
MINIMUM = 020 = 2.0mm  
MAXIMUM = 150 = 15.0mm  
TOL.: ±0.25mm

REV.	DATE & DRN
10	13/03/12 - NYW RELEASE
11	27/02/13 - NYW
12	13/05/13 - NYW
13	06/09/13 - NYW
14	ADD PACKAGING OPTION 8

Scale:	4:1	THIRD ANGLE	Unstated Tolerances: X ± 0.30 X ± 0.25 XX ± 0.15 XXX ± 0.10	Material	SEE NOTE
Drawn:	NYW				
App'd:	XXXX	Title	PIN HEADER		NOT TO SCALE
Date:	4 MAR '14	Revision:	1.4	Unit:	mm

<p>www.gradconn.com</p>		Type: BB02-2H	
		BB02-2H	
<p>THIS DRAWING IS CONFIDENTIAL AND MUST NOT BE COPIED OR DISCLOSED WITHOUT WRITTEN CONSENT</p>		Drawing Number:	
		Sheet 1 of 1	
<p>©</p>		Drawing © E and O E	

<p>© THIS DRAWING IS CONFIDENTIAL AND MUST NOT BE COPIED OR DISCLOSED WITHOUT WRITTEN CONSENT</p>		Drawing © E and O E	
---	--	---------------------	--