

CH03-BC - SIM CARD HOLDER 6 OR 8 PINS, SLIDE IN TYPE

FEATURES

1. GENERAL CHARACTERISTICS  
 DIMENSIONS: 25.50L x 17.20W x 2.50H mm  
 WEIGHT: APPROX. 0.08g  
 CONTACT PRINCIPLE: FRICTION TECHNOLOGY  
 OPERATING POSITION: SHAFT UP / DOWN / HORIZONTAL  
 MOUNTING SYSTEM: SMT TYPE (POST OPTIONAL)  
 DURABILITY: 10,000 CYCLES MIN.

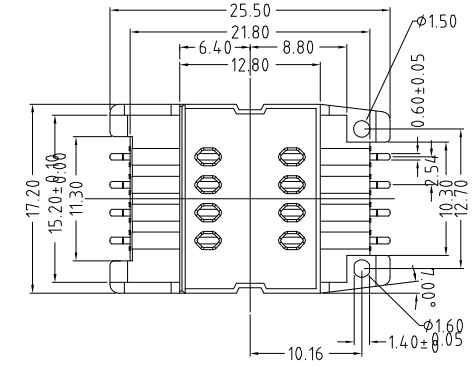
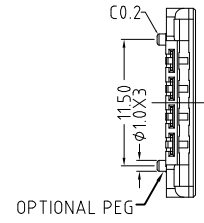
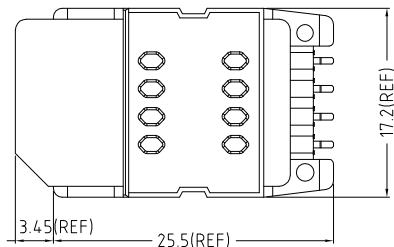
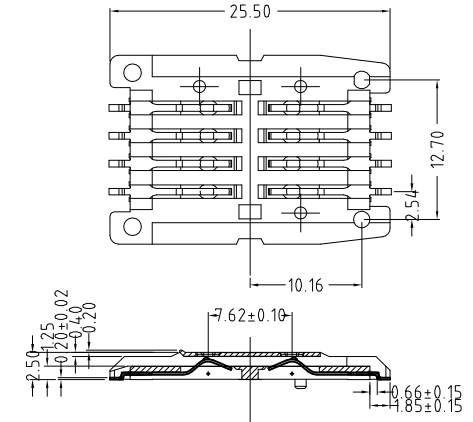
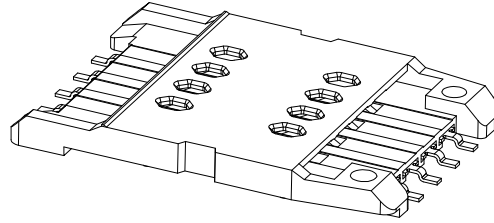
2. MECHANICAL CHARACTERISTICS  
 INSULATION MATERIAL: THERMOPLASTIC, UL 94V-0

3. ELECTRICAL CHARACTERISTICS  
 NUMBER OF CONTACTS (OPTIONAL): 6, 8 PINS  
 CONTACT RESISTANCE: 50M OHMS TYP. 100M OHMS MAX.  
 INSULATION RESISTANCE: > 1000M OHMS / 500V DC

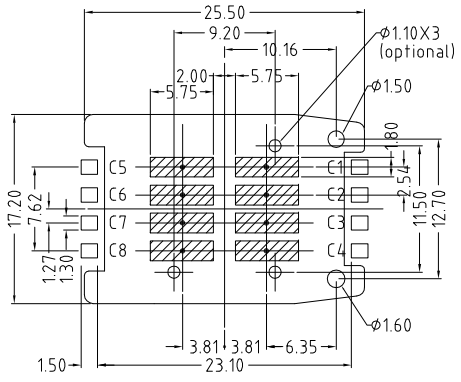
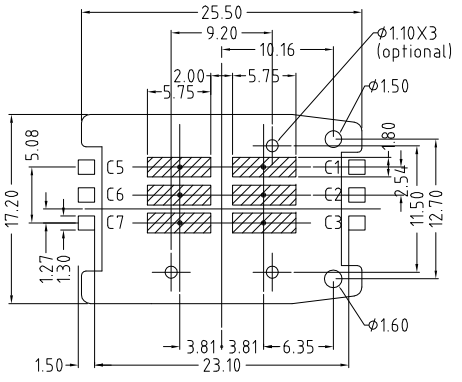
4. SOLDERABILITY  
 WAVE: NOT APPLICABLE  
 IR REFLOW: 260°C, 10 SEC. MAX.   
 MANUAL SOLDERING: 360°C, 3 SEC. MAX.

5. ENVIRONMENTAL CHARACTERISTICS  
 OPERATING TEMPERATURE: -40°C ~ +85°C  
 OPERATING HUMIDITY: 10% ~ 95% RH  
 STORAGE TEMPERATURE: -40°C ~ +85°C  
 STORAGE HUMIDITY: 10% ~ 95% RH  
 THERMAL SHOCK -40°C ~ +85°C, 5 CYCLES  
 DAMP HEAT: 40°C, 90% RH, 500 HR  
 SALT MIST: 35°C, 5%, NaCl, 48 HR

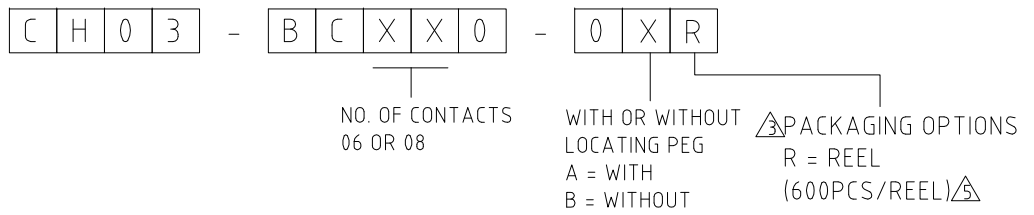
NOTES:  
 1. ACCEPTABLE SIM CARD SIZE SHOULD MEET GSM 11.11 SPECIFICATION REQUIREMENT. 



UNIT:MM  
 TOLERANCES:±0.10



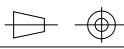
HOW TO ORDER



REV.	DATE & DRN
10	23/05/03 - IUR RELEASE
11	16/10/06 - CHC
12	29/05/07 - NYW
13	28/09/07 - NYW
14	21/11/07 - NYW
15	05/12/07 - CHC
16	28/04/09 - PN

11	16/10/06 - CHC
12	29/05/07 - NYW
13	28/09/07 - NYW
14	21/11/07 - NYW
15	05/12/07 - CHC
16	28/04/09 - PN

Scale:	2:1
Drawn:	NYW
App'd:	XXXX
Date:	28 APR '09

THIRD ANGLE	
Title	SIM CARD ACCEPTOR
Revision:	1.6

Unstated Tolerances:	0 Dec Places 1 Dec Places 2 Dec Places 3 Dec Places
Material	SEE NOTE
	NOT TO SCALE
Unit:	mm

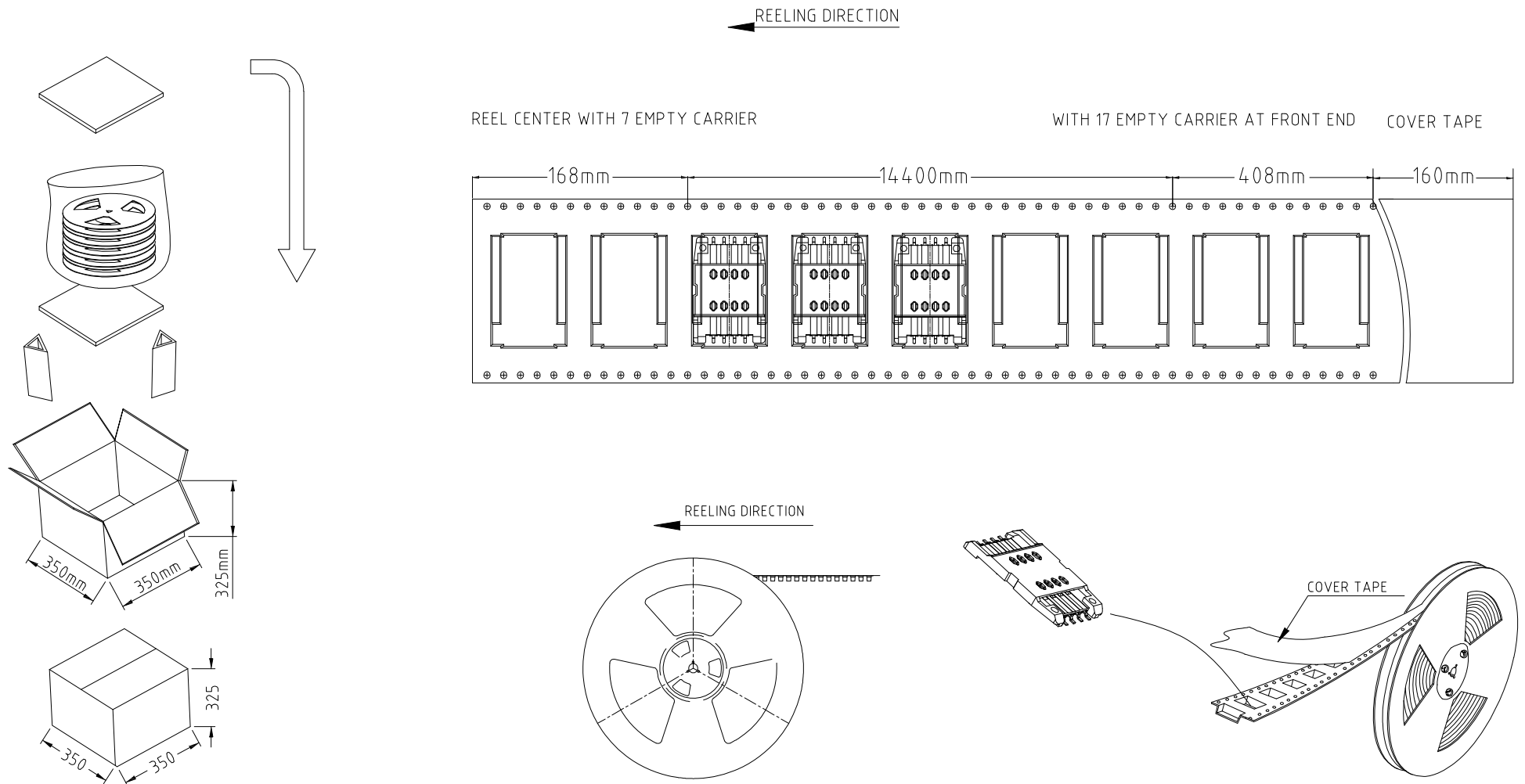
www.gradconn.com
------------------



THIS DRAWING IS CONFIDENTIAL AND MUST NOT BE COPIED OR DISCLOSED WITHOUT WRITTEN CONSENT

Type:	CH03-BC
	CH03-BC
Drawing Number:	
Sheet 1	of 2
Drawing C	E and O E

CH03-BC - SIM CARD HOLDER 6 OR 8 PINS, SLIDE IN TYPE - PACKAGING DRAWING



- NOTES:
1. REEL DIA.: 33CM.
  2. 600PCS PER REEL, GROSS WEIGHT: 1.03KG.
  3. 6 REELS PER FULL CARTON, GROSS WEIGHT: 7.38KG.

REV. DATE & DRN  
10 28/04/09 - PN  
PACKAGING DRAWING ADDED

Scale: NTS	THIRD ANGLE	Unstated Tolerances: 0 Dec Places 1 Dec Places 2 Dec Places 3 Dec Places	Material SEE NOTE
Drawn: PN		Title SIM CARD ACCEPTOR	NOT TO SCALE
App'd: XXXX	Date: 28 APR '09	Revision: 1.0	Unit: mm

www.gradconn.com

THIS DRAWING IS CONFIDENTIAL AND MUST NOT BE COPIED OR DISCLOSED WITHOUT WRITTEN CONSENT

Type: CH03-BC
CH03-BC
Drawing Number:
Sheet 2 of 2
Drawing C  E and O E