



CABLE 090 RF: RF CABLE ASSEMBLY, IPEX MHF + RP SMA BULKHEAD JACK WITH O-RING + MULTIPLE CABLE SIZES

SPECIFICATIONS :

1. IPEX MHF PLUG (SEE CHART FOR P/N)
2. MIT COAXIAL CABLE (SEE CHART FOR DETAIL)
3. RP SMA BULKHEAD JACK WITH O-RING (SEE CHART FOR P/N)

NOTES:

1. THE ORIENTATION OF CONNECTORS ON DRAWING IS FOR REFERENCE ONLY, IF THE ORDER IS LEFT BLANK THE CONNECTOR WILL NOT HAVE FIXED ORIENTATION.
2. FIXED ORIENTATION IS POSSIBLE FOR CABLE LENGTH 25MM TO 220MM. PLEASE SPECIFY THE FIXED ORIENTATIONS FROM THE ORDER CODE (F1, F2, ETC)
3. CONTACT GRAD CONN IF THE ORIENTATION YOU REQUIRE IS NOT SHOWN.
4. WORKING FREQUENCY RANGE: DC-6GHz

**USAGE PRECAUTIONS: CABLES USING 'MICRO' COAX ARE DELICATE:**  
 (i) HANDLE WITH CARE.  
 (ii) DO NOT TWIST; APPLY EXCESSIVE FORCES OR SHARP BENDS TO THE CABLE. DO NOT FORCEFULLY DEFORM WIRES.  
 (iii) CONSULT CONNECTOR MANUFACTURER'S DATASHEETS FOR DETAILED NOTES ON HANDLING INSTRUCTIONS.

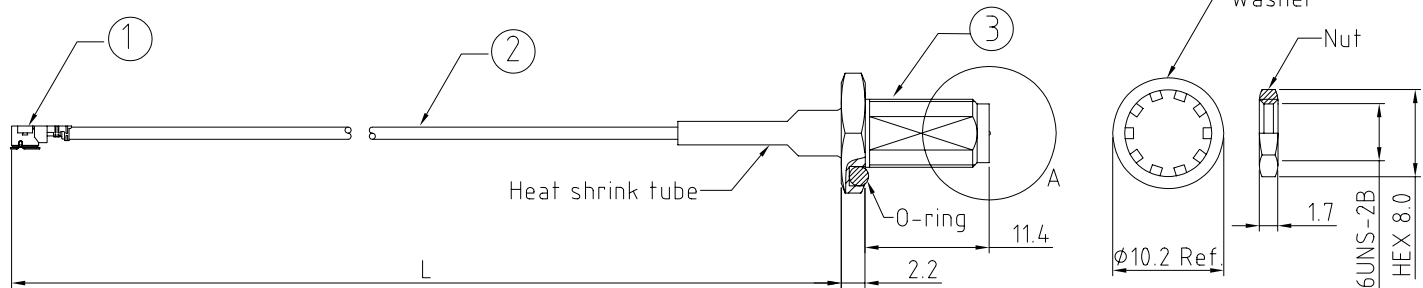
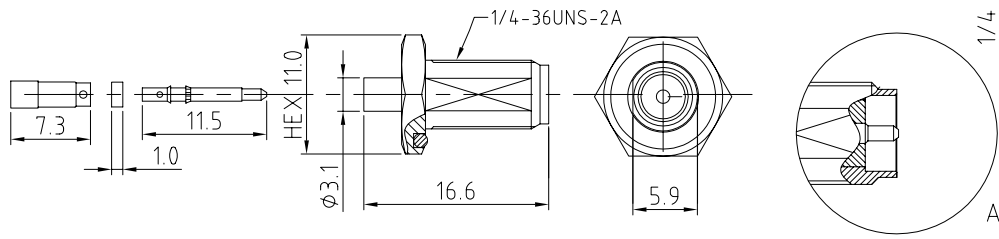
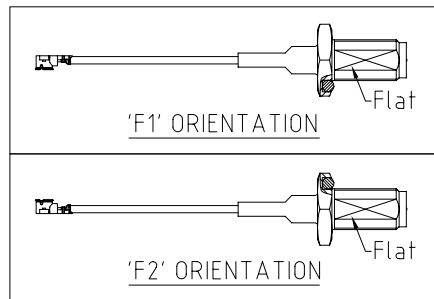


CHART OF CABLE AND CONNECTOR P/N

CABLE $\phi$ & COLOR	I-PEX P/N	SMA P/N
$\phi$ 1.13, GRAY	20278-112R-13	C20AD31113005B
$\phi$ 1.32, GRAY	20278-112R-32	C20AD31132005B
$\phi$ 1.37, BLACK	20351-112R-37	C20AD31137005B
$\phi$ 1.48, BLACK	20351-112R-37	C20AD31148005B
RG178, BROWN	20351-112R-37	C20AD31178005B



SMA JACK DETAIL DIMENSION



HOW TO ORDER

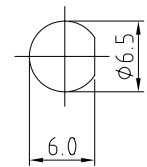
CABLE 090 RF - X X X - X X - X - X

"L" LENGTH IN MM  
 eg: 100MM = 0100  
 (MIN. 025-MAX.400)  
 STANDARD = 100, 150, 200)  
 Tolerance: <50mm :  $\pm 2$ mm.  
 51-200mm:  $\pm 5$ mm.  
 201-400mm:  $\pm 7$ mm.

CABLE SIZE OPTIONS:  
 BLANK =  $\phi$ 1.13MM CABLE  
 1 =  $\phi$ 1.32MM CABLE  
 2 =  $\phi$ 1.37MM CABLE  
 3 =  $\phi$ 1.48MM CABLE  
 4 = RG178 CABLE

WASHER AND NUT OPTIONS:  
 BLANK = SEPERATELY PACKED (STANDARD)  
 A = ASSEMBLED WITH CONNECTOR

BLANK = DOES NOT HAVE A FIXED ORIENTATION  
 F1 = U.FL CONNECTION DOWN (L=25-220MM)  
 F2 = U.FL CONNECTION UP (L=25-220MM)  
 (SEE NOTES 1, 2, 3 AND DIAGRAMS FOR MORE INFORMATION)



RECOMMENDED SMA MOUNTING HOLE

REV. DATE & DRN  
 10 09/17/09-NYW RELEASE  
 11 11/17/09-NYW  
 ADD DIRECTION OPTION  
 12 22/03/10-NYW  
 ADD MULTIPLE CABLE SIZES

Scale: NTS	THIRD ANGLE	Unstated .X .XX .XXX ANGLES	Tolerances: $\pm 0.2$ $\pm 0.1$ $\pm 0.05$ $\pm 5$	Material SEE NOTE
Drawn: NYW				
App'd: XXX	Title: CABLE ASSEMBLY	NOT TO SCALE		
Date: 22 MAR '10	Revision: 1.2	Unit: mm		

THIS DRAWING IS CONFIDENTIAL AND MUST NOT BE COPIED OR DISCLOSED WITHOUT WRITTEN CONSENT

Type: Cable 090 RF
CABLE 090 RF
Drawing Number:
Sheet 1 of 1
Drawing © E and O E