



CABLE 089 RF: RF CABLE ASSEMBLY, HIROSE U.FL + RP SMA BULKHEAD JACK WITH O-RING + MULTIPLE CABLE SIZES

SPECIFICATIONS

1. HIROSE U.FL PLUG (SEE CHART FOR P/N)
2. COAXIAL CABLE (SEE CHART FOR DETAIL)
3. RP SMA BULKHEAD JACK WITH O-RING (SEE CHART FOR P/N)

NOTES:

1. THE ORIENTATION OF CONNECTORS ON DRAWING IS FOR REFERENCE ONLY, IF THE ORDER IS LEFT BLANK THE CONNECTOR WILL NOT HAVE FIXED ORIENTATION.
2. FIXED ORIENTATION IS POSSIBLE FOR CABLE LENGTH 25MM TO 220MM. PLEASE SPECIFY THE FIXED ORIENTATIONS FROM THE ORDER CODE (F1, F2, ETC)
3. CONTACT GRAD CONN IF THE ORIENTATION YOU REQUIRE IS NOT SHOWN.
4. WORKING FREQUENCY RANGE: DC-6GHz

USAGE PRECAUTIONS: CABLES USING 'MICRO' COAX ARE DELICATE:

- (i) HANDLE WITH CARE.
- (ii) DO NOT TWIST; APPLY EXCESSIVE FORCES OR SHARP BENDS TO THE CABLE. DO NOT FORCEFULLY DEFORM WIRES.
- (iii) CONSULT CONNECTOR MANUFACTURER'S DATASHEETS FOR DETAILED NOTES ON HANDLING INSTRUCTIONS.

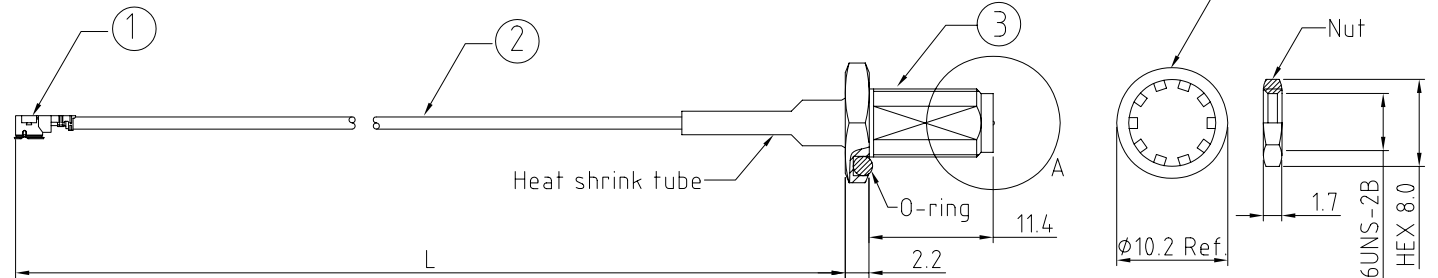
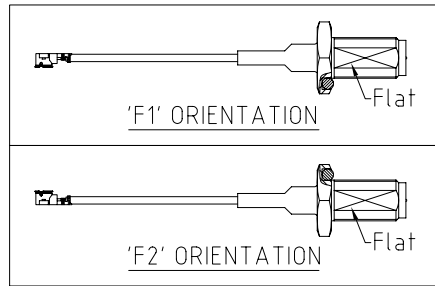
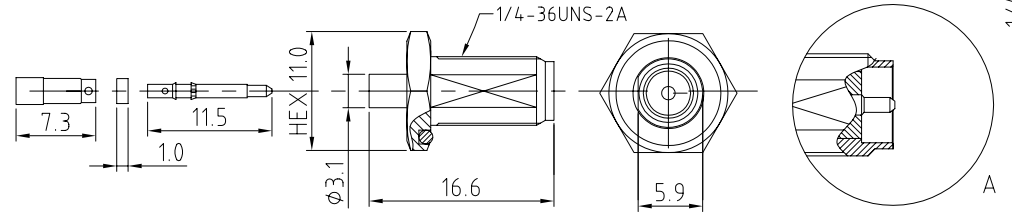


CHART OF CABLE AND CONNECTOR P/N

CABLE Ø & COLOR	HIROSE P/N	SMA P/N
Ø1.13, GRAY	U.FL-LP-068	C20AD31113005B
Ø0.81, GRAY	U.FL-LP(V)-040	C20AD31081005B
Ø1.32, GRAY	U.FL-LP-066	C20AD31132005B
Ø1.37, BLACK	U.FL-LP-088	C20AD31137005B



HOW TO ORDER
CABLE 089 RF - X X X - X X - X - X

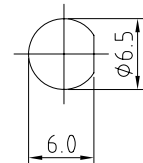
"L" LENGTH IN MM
eg: 100MM = 0100
(MIN. 025-MAX.400)
STANDARD = 100, 150, 200)
Tolerance: <50mm : ±2mm.
51-200mm: ±5mm.
201-400mm: ±7mm.

CABLE SIZE OPTIONS:
BLANK = Ø1.13MM CABLE
1 = Ø0.81MM CABLE
2 = Ø1.32MM CABLE
3 = Ø1.37MM CABLE

WASHER AND NUT OPTIONS:
BLANK = SEPERATELY PACKED (STANDARD)
A = ASSEMBLED WITH CONNECTOR

BLANK = DOES NOT HAVE A FIXED ORIENTATION
F1 = U.FL CONNECTION DOWN (L=25-220MM)
F2 = U.FL CONNECTION UP (L=25-220MM)
(SEE NOTES 1, 2, 3 AND DIAGRAMS FOR MORE INFORMATION)

SMA JACK DETAIL DIMENSION



RECOMMENDED SMA MOUNTING HOLE

REV. DATE & DRN
10 09/17/09-NYW RELEASE
11 11/17/09-NYW
12 22/03/10 - NYW
ADD ORIENTATION OPTION
ADD MULTIPLE CABLE SIZES

Scale: NTS	THIRD ANGLE	Unstated .X .XX .XXX ANGLES	Tolerances: ±0.2 ±0.1 ±0.05 ±5	Material SEE NOTE
Drawn: NYW				
App'd: XXX	Title: CABLE ASSEMBLY	NOT TO SCALE		
Date: 22 MAR '10	Revision: 1.2	Unit: mm		

© THIS DRAWING IS CONFIDENTIAL AND MUST NOT BE COPIED OR DISCLOSED WITHOUT WRITTEN CONSENT

Type: Cable 089 RF
CABLE 089 RF
Drawing Number:
Sheet 1 of 1
Drawing © E and O E