

CABLE 087 RF: RF CABLE ASSEMBLY, I-PEX MHF + SMA JACK S/T PCB MOUNT CABLE TYPE + MULTIPLE CABLE SIZES

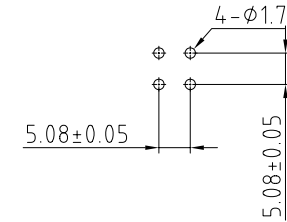
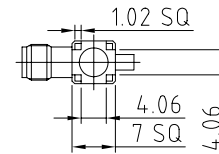
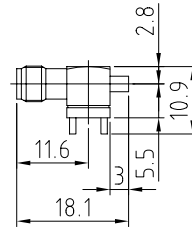
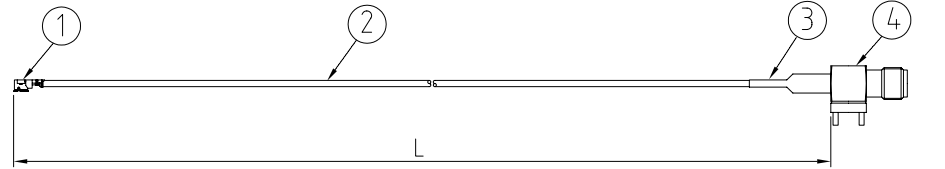
SPECIFICATIONS

1. I-PEX MHF PLUG (SEE CHART FOR P/N)
2. MIT COAXIAL CABLE (SEE CHART FOR DETAIL)
3. HEATSHRINK, COLOR: BLACK
4. SMA JACK S/T PCB MOUNT CABLE TYPE (SEE CHART FOR P/N)

**USAGE PRECAUTIONS: CABLES USING 'MICRO' COAX ARE DELICATE:**  
 (i) HANDLE WITH CARE.  
 (ii) DO NOT TWIST; APPLY EXCESSIVE FORCES OR SHARP BENDS TO THE CABLE. DO NOT FORCEFULLY DEFORM WIRES.  
 (iii) CONSULT CONNECTOR MANUFACTURER'S DATASHEETS FOR DETAILED NOTES ON HANDLING INSTRUCTIONS.

NOTES:

1. THE ORIENTATION OF CONNECTORS ON DRAWING IS FOR REFERENCE ONLY, IF THE ORDER IS LEFT BLANK THE CONNECTOR WILL NOT HAVE FIXED ORIENTATION.
2. FIXED ORIENTATION IS POSSIBLE FOR CABLE LENGTH 25MM TO 220MM. PLEASE SPECIFY THE FIXED ORIENTATIONS FROM THE ORDER CODE (F1, F2, ETC)
3. CONTACT GRAD CONN IF THE ORIENTATION YOU REQUIRE IS NOT SHOWN.
4. WORKING FREQUENCY RANGE: DC-6GHz

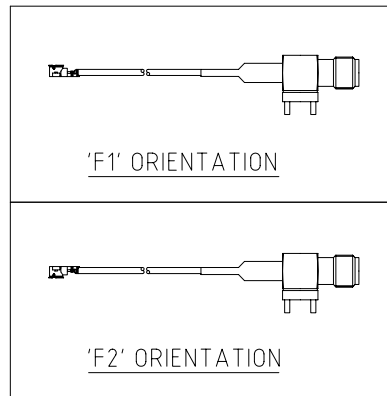


SMA JACK DETAIL DIMENSION

RECOMMENDED PC BOARD LAYOUT

CHART OF CABLE AND CONNECTOR P/N

CABLE $\phi$ & COLOR	I-PEX P/N	SMA P/N
$\phi$ 1.13, GRAY	20278-112R-13	C02BI31113015B
$\phi$ 0.81, GRAY	20278-112R-08	C02BI31081015B
$\phi$ 1.32, GRAY	20278-112R-32	C02BI31132015B
$\phi$ 1.37, BLACK	20351-112R-37	C02BI31137015B
RG178, BROWN	20351-112R-37	C02BI31178015B



HOW TO ORDER

CABLE 087 RF - X X X - X X - X

"L" LENGTH IN MM  
 eg: 100MM = 0100  
 (MIN. 025-MAX.400)  
 STANDARD = 100, 150, 200)  
 Tolerance: <math>-50\text{mm}</math> :  $\pm 2\text{mm}</math>.  
 51-200mm:  $\pm 5\text{mm}</math>.  
 201-400mm:  $\pm 7\text{mm}</math>.$$$

CABLE SIZE OPTIONS:

- 0 =  $\phi$ 1.13MM CABLE
- 1 =  $\phi$ 0.81MM CABLE
- 2 =  $\phi$ 1.32MM CABLE
- 3 =  $\phi$ 1.37MM CABLE
- 4 = RG178 CABLE

BLANK = DOES NOT HAVE A FIXED ORIENTATION  
 F1 = I-PEX CONNECTION UP (L=25-220MM)  
 F2 = I-PEX CONNECTION DOWN (L=25-220MM)  
 (SEE NOTES 1, 2, 3 AND DIAGRAMS FOR MORE INFORMATION)

REV. DATE & DRN  
 10 27/10/09 - CHC RELEASE  
 11 14/12/09 - NYW  
 ADD CABLE SIZE OPTIONS.  
 12 15/12/09 - NYW  
 AMEND I-PEX P/N  
 13 22/03/10 - NYW  
 CHANGE RG178 TO BROWN  
 14 17/05/10 - NYW  
 AMEND SMA DESCRIPTION TO S/T TYPE

Scale: NTS	THIRD ANGLE	Unstated X .XX .XXX ANGLES	Tolerances: $\pm 0.2$ $\pm 0.1$ $\pm 0.05$ $\pm 5$	Material SEE NOTE
Drawn: CHC				
App'd: XXX	Title: CABLE ASSEMBLY			NOT TO SCALE
Date: 17 MAY '10	Revision: 1.4			Unit: mm

© THIS DRAWING IS CONFIDENTIAL AND MUST NOT BE COPIED OR DISCLOSED WITHOUT WRITTEN CONSENT

Type: Cable 087 RF
CABLE 087 RF
Drawing Number:
Sheet 1 of 1
Drawing © E and O E