

CABLE 080 RF: RF CABLE ASSEMBLY, I-PEX MHF + RP SMA BULKHEAD JACK + 1.37MM CABLE - 6GHz

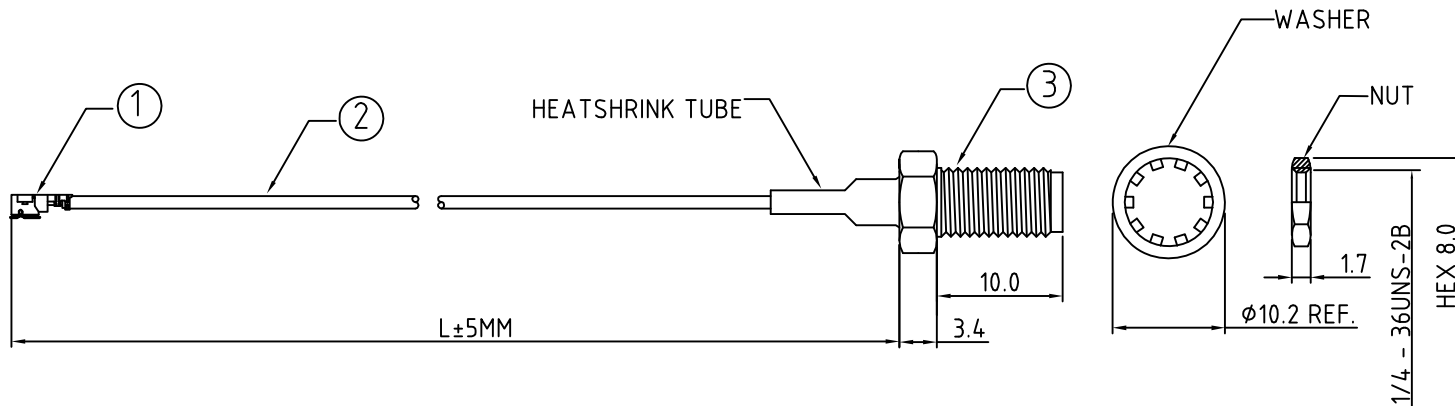
SPECIFICATIONS

1. I-PEX MHF PLUG (20351-112R-37), GOLD (ALTERNATIVE TO HIROSE U.FL)
2. 1.37MM COAXIAL CABLE, COLOR: WHITE
3. RP SMA ST BULKHEAD JACK (C20AB31137003I), GOLD

USAGE PRECAUTIONS: CABLES USING 'MICRO' COAX ARE DELICATE:
 (i) HANDLE WITH CARE.
 (ii) DO NOT TWIST; APPLY EXCESSIVE FORCES OR SHARP BENDS TO THE CABLE. DO NOT FORCEFULLY DEFORM WIRES.
 (iii) CONSULT CONNECTOR MANUFACTURER'S DATASHEETS FOR DETAILED NOTES ON HANDLING INSTRUCTIONS.

NOTES:

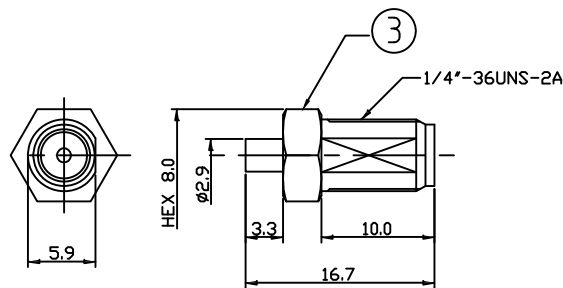
1. THE ORIENTATION OF CONNECTORS ON DRAWING IS FOR REFERENCE ONLY, FIXED ORIENTATION IS POSSIBLE FOR CABLE SHORTER THAN 100MM. PLEASE CONTACT US IF YOU REQUIRE A SPECIFIC ORIENTATION.
2. ELECTRICAL:
WORKING FREQUENCY RANGE: DC-6GHz



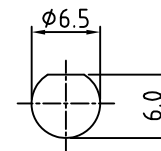
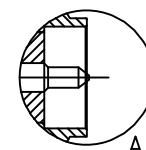
HOW TO ORDER
 CABLE 080 RF - X X X - X

"L" LENGTH IN MM
 eg: 100MM = 100
 (MIN. 50 - MAX. 400,
 STANDARD : 100, 150, 200)

WASHER AND NUT OPTIONS:
 BLANK = SEPERATELY PACKED (STANDARD)
 A = ASSEMBLED WITH CONNECTOR



SMA JACK DETAIL DIMENSION



RECOMMENDED SMA MOUTING HOLE

REV. DATE & DRN TO 10/08/09 - NYW RELEASE

| | | | | |
|------------------|-----------------------|---|--|----------------------|
| Scale: NTS | THIRD ANGLE | Unstated .X .XX .XXX ANGLES | Tolerances: ±0.2 ±0.1 ±0.05 ±5 | Material SEE NOTE |
| Drawn: NYW | | | | NOT TO SCALE |
| App'd: XXX | Title: CABLE ASSEMBLY | Unit: mm | | |
| Date: 10 AUG '09 | Revision: 1.0 | | | |

© THIS DRAWING IS CONFIDENTIAL AND MUST NOT BE COPIED OR DISCLOSED WITHOUT WRITTEN CONSENT

| |
|---------------------|
| Type: Cable 080 RF |
| CABLE 080 RF |
| Drawing Number: |
| Sheet 1 of 1 |
| Drawing © E and O E |