

CAB065RF: RF CABLE ASSEMBLY, SMA STRAIGHT BULKHEAD JACK + 1.32 CABLE + STRIP / TIN

SPECIFICATIONS :

1. SMA ST BULKHEAD (P/N: C02ABWS178003B), GOLD
2. 1.32MM SINGLE SHIELD COXIAL CABLE, MIT, COLOR: GRAY
3. FLEXIBLE COPPER WIRE, DIAMETER: 0.5MM.

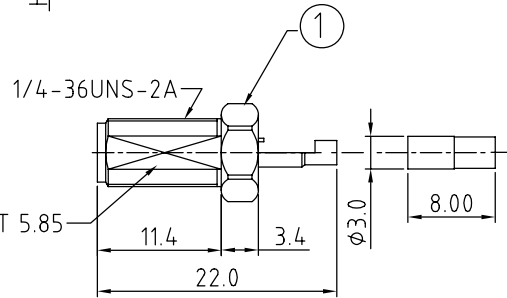
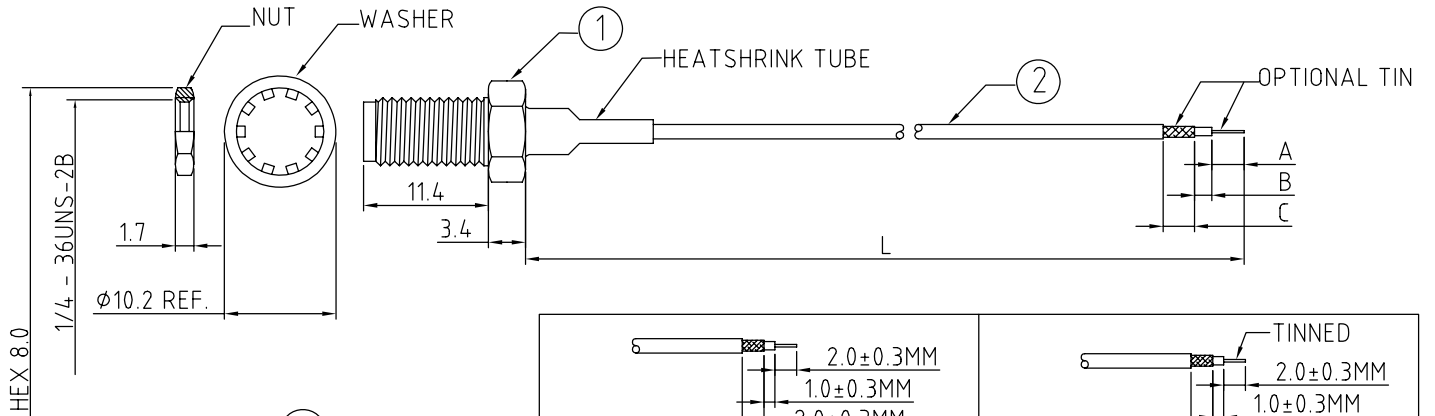
NOTES:

1. STRIP DIMENSION A / B / C STANDS FOR
 A = CENTRE CONDUCTOR
 B = INSULATOR
 C = BRAID.

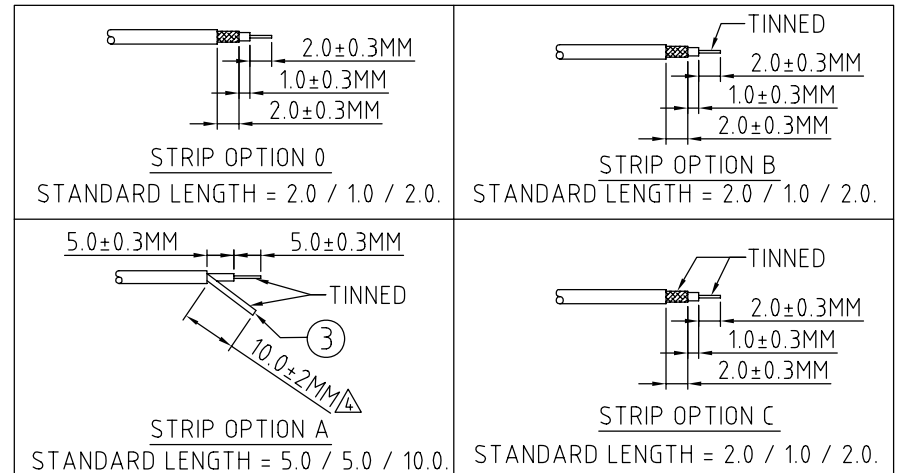
2. INSERTION LOSS TEST REPORT IS NOT AVAILABLE.

3. THIS IS OUR STANDARD OFFERING, SPECIAL DESIGNS ARE AVAILABLE, INCLUDING CUSTOM TOLERANCES AND SPECIAL BRAID TINNING DESIGNS. PLEASE CONTACT GRADCONN FOR MORE INFORMATION.

4. CENTRE CONDUCTOR OF COAX CABLE IS TINNED. LENGTH OF TINNED COPPER WIRE IS SOLDERED TO THE BRAID/SHIELD OF THE COAX CABLE WHICH ALLOWS SOLDERING TO PCB.



SMA JACK DETAIL DIMENSION



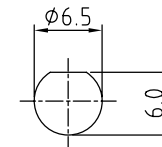
HOW TO ORDER
 CAB065RF - X X X X - X.X / X.X / X.X - X - X

"L" LENGTH IN MM
 eg: 100MM = 0100
 (MIN. 025-MAX.400)
 STANDARD = 100, 150, 200)
 Tolerance: <50mm : ±2mm.
 51-200mm: ±5mm.
 201-500mm: ±7mm.
 >500mm: ±10mm.

A/B/C STRIP DIMENSION IN MM
 FOR STANDARD LENGTH PLEASE
 REFER TO DRAWINGS.
 (SPECIALS AVAILABLE UPON
 REQUEST.)

WASHER AND NUT OPTIONS:
 BLANK = SEPERATELY PACKED (STANDARD)
 A = ASSEMBLED WITH CONNECTOR

STRIP AND TIN OPTIONS:
 0 = STRIPPED ONLY, NOT TINNED
 A = CENTER CONDUCTOR & SOLDERED COPPER WIRE TINNED (SEE
 NOTE 4 FOR SOLDER TO PCB APPLICATION)
 B = STRIPPED, END A TINNED
 C = STRIPPED, END A & C TINNED



RECOMMENDED SMA MOUNTING HOLE

10	03/02/09 - NYW RELEASE
11	08/10/09 - NYW CHANGE TWISTED BRAID TO SOLDERED COPPER WIRE. ADD SPECIFICATION OF COMPONENT 3.
12	30/10/09 - NYW ADD WASHER & NUT OPTION.
13	26/11/09 - NYW ADD STRIP OPTIONS B, C. ADD 1 DECIMAL PLACE TO STRIP DIMENSIONS. CHANGE P/N TO CAB065RF. WAS CABLE 065 RE.
14	11/07/11 - NYW AMEND TOLERANCE.

Scale: NTS	THIRD ANGLE	Unstated Tolerances: .X ±0.2, .XX ±0.1, .XXX ±0.05, ANGLES ±5	Material: SEE NOTE
Drawn: NYW			
App'd: XXX	Title: CABLE ASSEMBLY		NOT TO SCALE
Date: 11 JUL '11	Revision: 1.4		Unit: mm

GRADCONN
www.gradconn.com

THIS DRAWING IS CONFIDENTIAL AND MUST NOT BE COPIED OR DISCLOSED WITHOUT WRITTEN CONSENT

Type: Cable 065 RF
CAB065RF
Drawing Number:
Sheet 1 of 1
Drawing © E and O E