



CABLE 052 RF: RF CABLE ASSEMBLY, I-PEX MHF + I-PEX MHF + MULTIPLE CABLE SIZES

SPECIFICATIONS

1. I-PEX MHF PLUG :

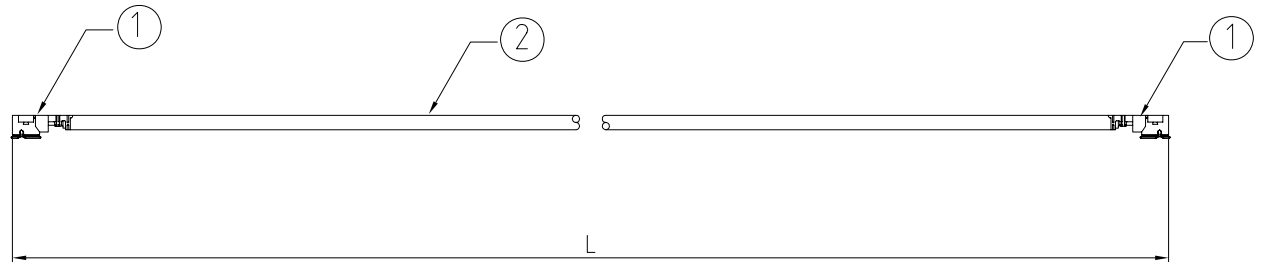
- FOR ϕ 1.32MM CABLE: 20278-112R-32
- FOR ϕ 0.81MM CABLE: 20311-011R-08
- FOR ϕ 1.13MM & 0.047" CABLE: 20278-112R-13
- FOR ϕ 1.37MM CABLE: 20351-112R-37
- FOR RG178 CABLE: 20351-112R-37

USAGE PRECAUTIONS: CABLES USING 'MICRO' COAX ARE DELICATE:
 (i) HANDLE WITH CARE.
 (ii) DO NOT TWIST; APPLY EXCESSIVE FORCES OR SHARP BENDS TO THE CABLE. DO NOT FORCEFULLY DEFORM WIRES.
 (iii) CONSULT CONNECTOR MANUFACTURER'S DATASHEETS FOR DETAILED NOTES ON HANDLING INSTRUCTIONS.

2. SEE CABLE SIZE OPTIONS.

NOTES:

1. THE ORIENTATION OF CONNECTORS ON DRAWING IS FOR REFERENCE ONLY, IF THE ORDER IS LEFT BLANK THE CONNECTOR WILL NOT HAVE FIXED ORIENTATION.
2. FIXED ORIENTATION IS POSSIBLE FOR CABLE LENGTH 25MM TO 220MM. PLEASE SPECIFY THE FIXED ORIENTATIONS FROM THE ORDER CODE (F1, F2, ETC)
3. CONTACT GRAD CONN IF THE ORIENTATION YOU REQUIRE IS NOT SHOWN.
4. WORKING FREQUENCY RANGE: DC-6GHz



CABLE SIZE OPTIONS:

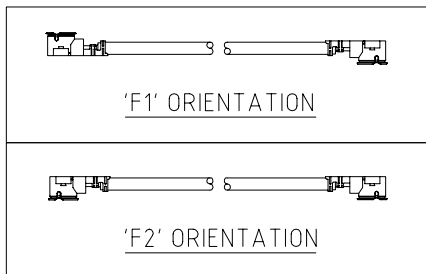
- BLANK = ϕ 1.32MM CABLE, COLOR: GRAY
- 1 = ϕ 0.81MM CABLE, COLOR: GRAY
- 2 = ϕ 1.13MM CABLE, COLOR: GRAY
- 3 = ϕ 1.37MM CABLE, COLOR: BLACK
- 4 = RG178 CABLE, COLOR: BROWN
- 5 = ϕ 0.047" SEMI-RIGID CABLE, COLOR: SILVER
- 6 = ϕ 1.13MM CABLE, COLOR: BLACK

HOW TO ORDER

CABLE 052 RF - XXX - XX - X

"L" LENGTH IN MM
 eg: 100MM = 0100
 (MIN. 025-MAX.400)
 STANDARD = 100, 150, 200)
 Tolerance: <50mm : \pm 2mm.
 51-200mm: \pm 5mm.
 201-400mm: \pm 7mm.

BLANK = DOES NOT HAVE A FIXED ORIENTATION
 F1 = OPPOSITE ORIENTATION (L=25-220MM)
 F2 = SAME ORIENTATION (L=25-220MM)
 (SEE NOTES 1, 2, 3 AND DIAGRAMS FOR MORE INFORMATION)



10	02/10/08 - NYW RELEASE
11	28/11/08 - NYW CHANGE IPEX P/N TO 20278-112R-32 (HALOGEN FREE)
12	17/12/08 - NYW ADD ORIENTATION OPTION F1
13	07/02/09 - CHC ADD CABLE SIZE OPTIONS AND ORIENTATION OPTION F2
14	03/03/10 - NYW ADD CABLE SIZE OPTION 5
15	27/03/10 - NYW CHANGE RG178 TO BROWN
16	25/08/10 - NYW ADD CABLE OPTION 6

Scale: NTS	THIRD ANGLE	Unstated X .XX .XXX ANGLES	Tolerances: \pm 0.2 \pm 0.1 \pm 0.05 \pm 5	Material SEE NOTE
Drawn: CHC				
App'd: XXX	Title: CABLE ASSEMBLY	NOT TO SCALE		
Date: 25 AUG '10	Revision: 1.6	Unit: mm		

www.gradconn.com

THIS DRAWING IS CONFIDENTIAL AND MUST NOT BE COPIED OR DISCLOSED WITHOUT WRITTEN CONSENT

Type: Cable 052 RF
CABLE 052 RF
Drawing Number:
Sheet 1 of 1
Drawing E and O E