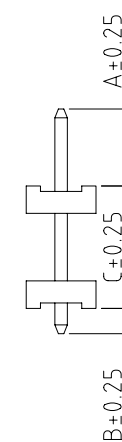
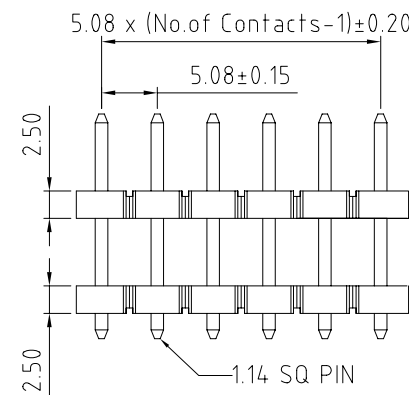
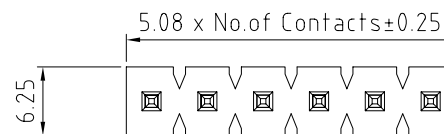
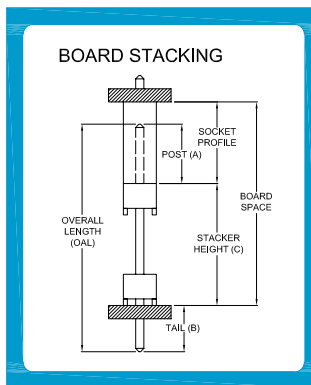


BB02-VC: 5.08mm (0.2") HEADER, STRAIGHT, THROUGH HOLE, SINGLE ROW - 02 to 20 CONTACTS

SPECIFICATIONS

CURRENT RATING	7.9 AMP
INSULATOR RESISTANCE	5000 MEGOHMS MIN.
CONTACT RESISTANCE	20m ohms MAX.
DIELECTRIC WITHSTANDING	1500V AC/DC
OPERATING TEMPREATURE	-55°C TO +125°C
CONTACT MATERIAL	BRASS
INSULATOR MATERIAL	LCP, UL 94V-0
PLATING:	MATTE TIN OVER 30-50U" NICKEL
SOLDERABILITY	IR REFLOW: 280°C FOR 10 SEC
	WAVE: 250°C FOR 5-10 SEC
	MANNUAL SOLDER: 380°C FOR 3-5 SEC



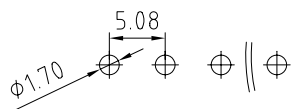
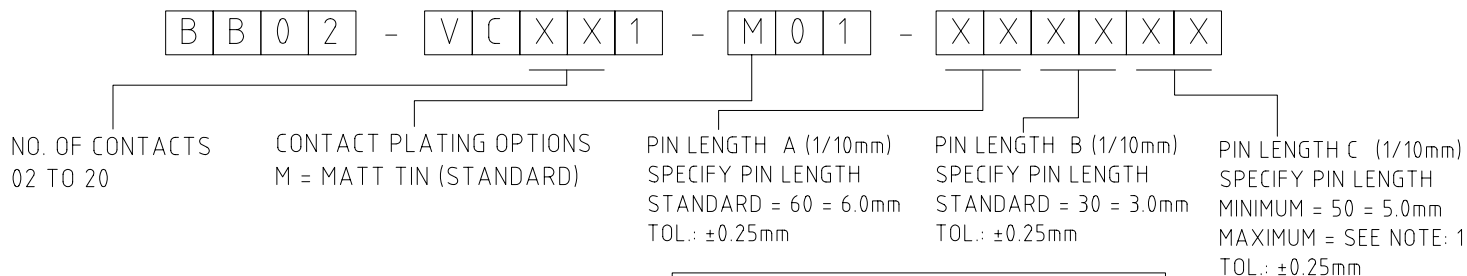
PACKAGE: BULK.

MATES WITH: - BB02-VM
BB02-VN

NOTES:

- MAX. OAL (OVERALL PIN LENGTH A+C+B) = 29mm.
- GOLD FLASH PLATING IS AVAILABLE UPON REQUEST, PLEASE CONTACT US FOR MORE INFORMATION.

HOW TO ORDER



RECOMMENDED PC BOARD LAYOUT
(TOLERANCE: ±0.05mm)

LONGER PIN LENGTH REQUIRED?
If pin length required is longer than 9.9mm (99), then use a '/' to separate the numbers.
Example: A=6.0mm, B=3.0mm, C=12.5mm, mark as 60 / 30 / 125.

REV. DATE & DRN
10. 10/02/09 - CHC RELEASE
11. 05/07/09 - RYK - REMOVE OTHER PLATING OPTIONS. ADD NOTES 2.

Scale: 2:1	THIRD ANGLE	Unstated Tolerances: X ± 0.30 X ± 0.25 XX ± 0.15 .XXX ± 0.10	Material SEE NOTE
Drawn: CHC			NOT TO SCALE
App'd: XXXX	Title: HEADER		Unit: mm
Date: 5 MAR '09	Revision: 1.1		

© THIS DRAWING IS CONFIDENTIAL AND MUST NOT BE COPIED OR DISCLOSED WITHOUT WRITTEN CONSENT

Type: BB02-VC
BB02-VC
Drawing Number:
Sheet 1 of 1
Drawing © E and O E