

BB02-VB: 5.08mm (0.2") HEADER, RIGHT ANGLE, THROUGH HOLE, SINGLE ROW - 02 to 20 CONTACTS

SPECIFICATIONS

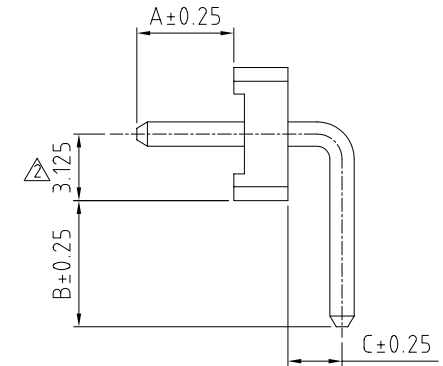
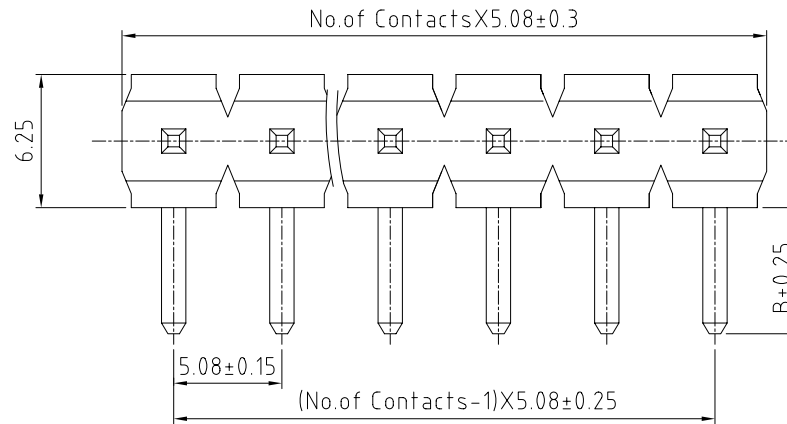
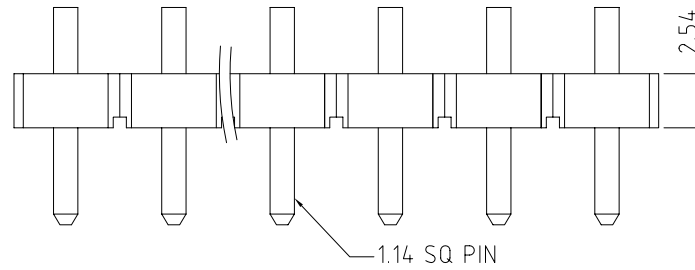
CURRENT RATING	7.9 AMP
INSULATOR RESISTANCE	5000 MEGOHMS MIN.
CONTACT RESISTANCE	20m ohms MAX.
DIELECTRIC WITHSTANDING	1500V AC/DC
OPERATING TEMPERATURE	-55°C TO +125°C
CONTACT MATERIAL	BRASS
INSULATOR MATERIAL	LCP, UL 94V-0
PLATING	MATT TIN OVER 30-50U" NICKEL
SOLDERABILITY	IR REFLOW: 280°C FOR 10 SEC WAVE: 250°C FOR 5-10 SEC MANUAL SOLDER: 380°C FOR 3-5 SEC

PACKAGE: BULK.

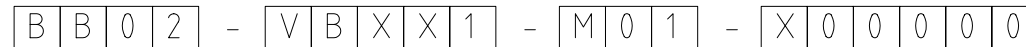
MATES WITH: - BB02-VM
BB02-VN

NOTES:

- GOLD FLASH PLATING IS AVAILABLE UPON REQUEST, PLEASE CONTACT US FOR MORE INFORMATION.



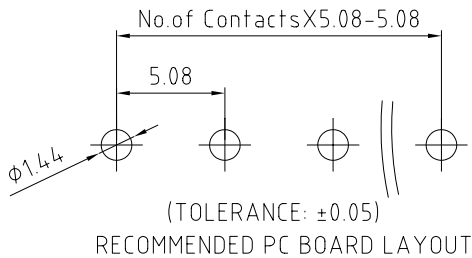
HOW TO ORDER



NO. OF CONTACTS
02 TO 20

CONTACT PLATING OPTIONS
M = MATT TIN (STANDARD)

PIN LENGTH OPTIONS
A = A : 4.55, B : 8.10, C : 2.54
△B = A : 3.20, B : 13.83, C : 5.56



REV.	DATE & DRN.
10	02/05/09 - NYW RELEASE
11	10/02/07 - NYW
12	28/11/08 - CHC
13	25/12/08 - NYW
14	05/03/09 - NYW

10	02/05/09 - NYW RELEASE
11	10/02/07 - NYW
12	28/11/08 - CHC
13	25/12/08 - NYW
14	05/03/09 - NYW

Scale:	4:1
Drawn:	CHC
App'd:	XXXX
Date:	5 MAR '09

THIRD ANGLE	
Title	HEADER
Revision:	1.4

Unstated Tolerances:	X: ± 0.30 X: ± 0.25 .XX: ± 0.15 .XXX: ± 0.10
Material	SEE NOTE
	NOT TO SCALE
Unit:	mm

Material	SEE NOTE
	NOT TO SCALE
Unit:	mm

www.gradconn.com

THIS DRAWING IS CONFIDENTIAL AND MUST NOT BE COPIED OR DISCLOSED WITHOUT WRITTEN CONSENT

Type:	BB02-VB
Drawing Number:	BB02-VB
Sheet	1 of 1
Drawing	© E and O E