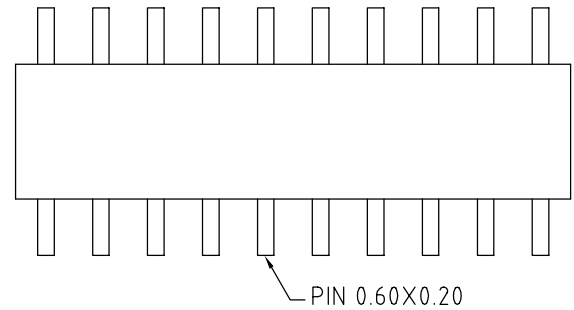


BB02-GY-A :- 2.00mm x 2.00mm (0.079" x 0.079") SOCKET, DUAL ROW, RIGHT ANGLE, SMT TYPE, 04 TO 50 CONTACTS, PROFILE: 4.0MM

SPECIFICATIONS :

CURRENT RATING	2 AMP
INSULATOR RESISTANCE	1000 MEGOHMS MIN.
DIELECTRIC WITHSTANDING	AC 500 V
CONTACT RESISTANCE	20m OHMS MAX.
OPERATING TEMPERATURE	-40°C TO +105°C
CONTACT MATERIAL	PHOSPHOR BRONZE
INSULATOR MATERIAL	THERMO PLASTIC, UL 94V-0 STANDARD NYLON 6T
PLATING	GOLD OR TIN OVER 30~50U" NICKEL
SOLDERABILITY	IR REFLOW: 260°C FOR 10 SEC MANUAL SOLDER: 350°C FOR 3-5 SEC

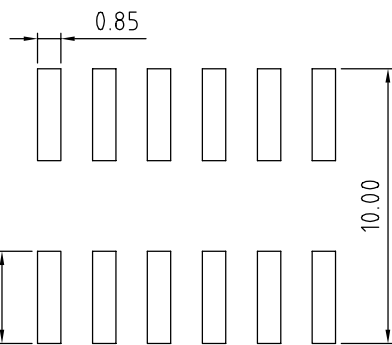
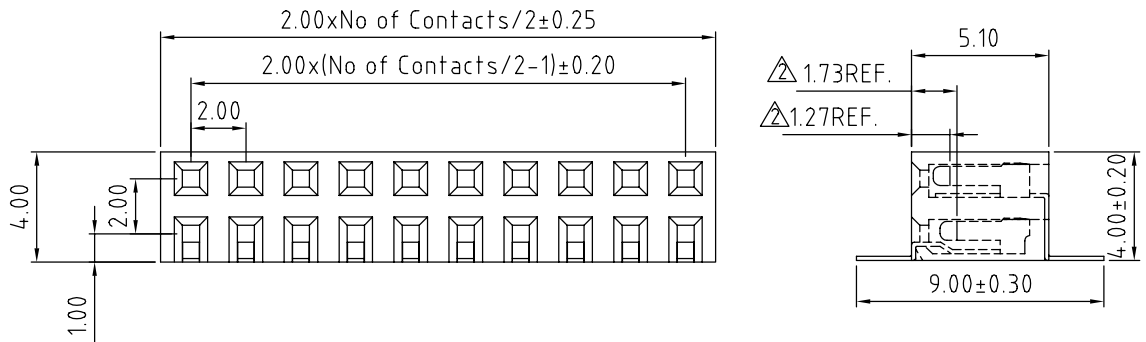


NOTES:

1. RECOMMENDED MATING PIN LENGTH: 4.0MM.  $\Delta$

MATES WITH: -

BB02-FA	BB02-FR
BB02-FD	BB02-FT
BB02-FE	BB02-FU
BB02-FG	BB02-RN



RECOMMENDED PC BOARD HOLE LAYOUT  
(TOLERANCE: ±0.05)

HOW TO ORDER

<table border="1" style="display: inline-table; border-collapse: collapse;"> <tr><td>B</td><td>B</td><td>0</td><td>2</td></tr> </table>	B	B	0	2	-	<table border="1" style="display: inline-table; border-collapse: collapse;"> <tr><td>G</td><td>Y</td><td>X</td><td>X</td><td>2</td></tr> </table>	G	Y	X	X	2	-	<table border="1" style="display: inline-table; border-collapse: collapse;"> <tr><td>X</td><td>A</td><td>X</td></tr> </table>	X	A	X	-	<table border="1" style="display: inline-table; border-collapse: collapse;"> <tr><td>0</td><td>0</td><td>0</td><td>0</td><td>0</td><td>0</td></tr> </table>	0	0	0	0	0	0
B	B	0	2																					
G	Y	X	X	2																				
X	A	X																						
0	0	0	0	0	0																			
$\Delta$ NO. OF CONTACTS 04 TO 50		CONTACT PLATING OPTIONS K = GOLD FLASH (STANDARD, 0.8U"-1.0U") A = 10U" GOLD ON CONTACT/GOLD FLASH ON TAIL B = 15U" GOLD ON CONTACT/GOLD FLASH ON TAIL C = 30U" GOLD ON CONTACT/GOLD FLASH ON TAIL T = BRIGHT TIN M = MATT TIN		PROFILE = 4.0MM		PACKAGING OPTIONS 3 - TUBE 6 - T & R																		

REV. DATE & DRN 1.0 24/03/06 - NYW RELEASE 1.1 21/07/06 - NYW RELEASE 1.2 02/07/07 - NYW RELEASE 1.3 03/06/08 - CHC 1.4 05/02/09 - CHC	Scale: 5:1 Drawn: CHC App'd: XXXX Date: 05 FEB '09	THIRD ANGLE  Title SOCKET Revision: 1.4	Unstated Tolerances: X ± 0.30 X ± 0.25 XX ± 0.15 XXX ± 0.10	Material SEE NOTE NOT TO SCALE Unit: mm	 www.gradconn.com THIS DRAWING IS CONFIDENTIAL AND MUST NOT BE COPIED OR DISCLOSED WITHOUT WRITTEN CONSENT	Type: BB02-GY BB02-GY-A Drawing Number: Sheet 1 of 1 Drawing © E and OE
---	---	--	---	--	--	---