

BB02-JL :- 2.54mm (0.1") FEMALE HEADER, DUAL ENTRY TYPE, SINGLE ROW, THROUGH HOLE - 2 TO 40 CONTACTS

SPECIFICATIONS

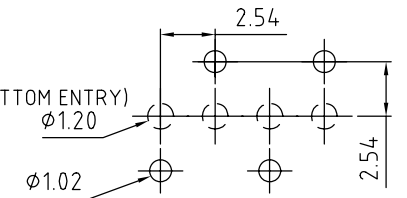
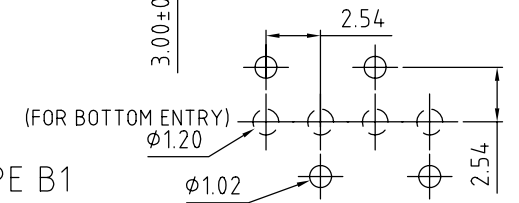
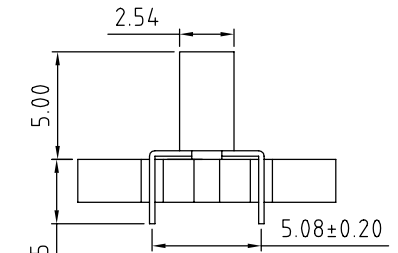
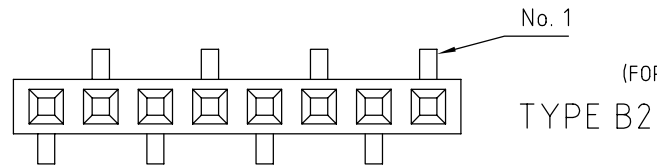
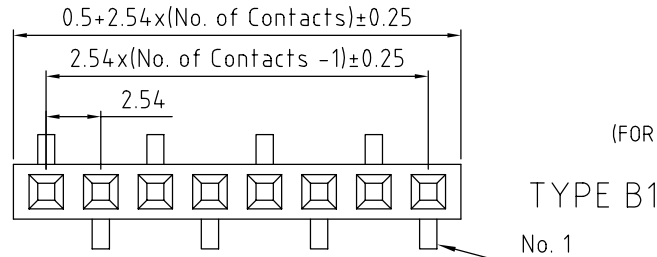
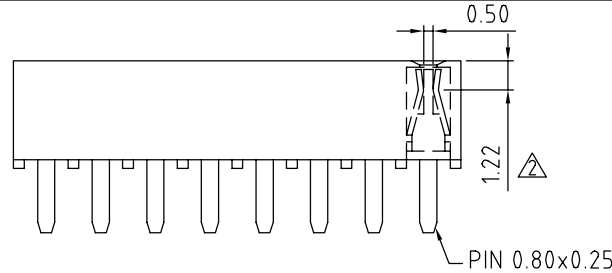
CURRENT RATING	3 AMPS
INSULATOR RESISTANCE	1000 MEGOHMS MIN.
CONTACT RESISTANCE	20 M OHMS MAX
DIELECTRIC WITHSTANDING	AC 600 V
OPERATING TEMPERATURE	-40°C TO +105°C
CONTACT MATERIAL	PHOSPHOR BRONZE
INSULATOR MATERIAL	THERMOPLASTIC, UL 94V-0 NYLON 6T : STANDARD PBT : SPECIAL OPTION
PLATING	GOLD, TIN OR SELECTIVE OVER 30-50U" NICKEL
SOLDERABILITY:	NYLON 6T - IR REFLOW: 260°C FOR 10 SEC WAVE: 230°C FOR 5-10 SEC MANUAL SOLDER: 350°C FOR 3-5 SEC

NOTES:

1. PACKED IN TRAY. Δ
2. RECOMMENDED MATING PIN LENGTH FOR TOP ENTRY: 4.5MM. Δ

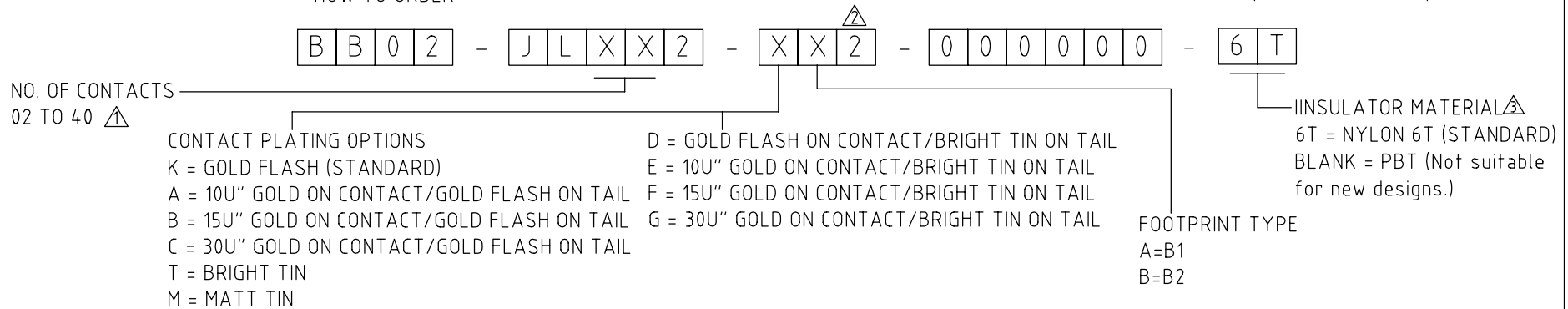
MATES WITH:

BB02-HA	BB02-HY
BB02-HC	BB02-TA
BB02-HD	BB02-TC
BB02-HG	BB02-TJ
BB02-HH	BB02-TK



RECOMMENDED PC BOARD LAYOUT (TOLERANCE: ±0.05)

HOW TO ORDER

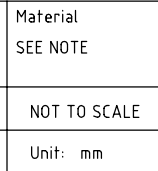


10	07/07/02 - AMI RELEASE
11	07/07/05 - NJR
12	22/07/05 - NYW
13	17/08/06 - NYW
14	29/05/07 - NYW
15	27/05/08 - PN
16	07/02/09 - CHC

Scale:	4:1
Drawn:	CHC
App'd:	XXXX
Date:	17 FEB '09

THIRD ANGLE	
Title	SOCKET
Revision:	16

Unstated Tolerances:	X ± 0.30 X ± 0.25 XX ± 0.15 .XXX ± 0.10
Material	SEE NOTE
NOT TO SCALE	
Unit:	mm



Type:	BB02-JL
BB02-JL	
Drawing Number:	
Sheet 1 of 1	
Drawing © E and O E	

THIS DRAWING IS CONFIDENTIAL AND MUST NOT BE COPIED OR DISCLOSED WITHOUT WRITTEN CONSENT