

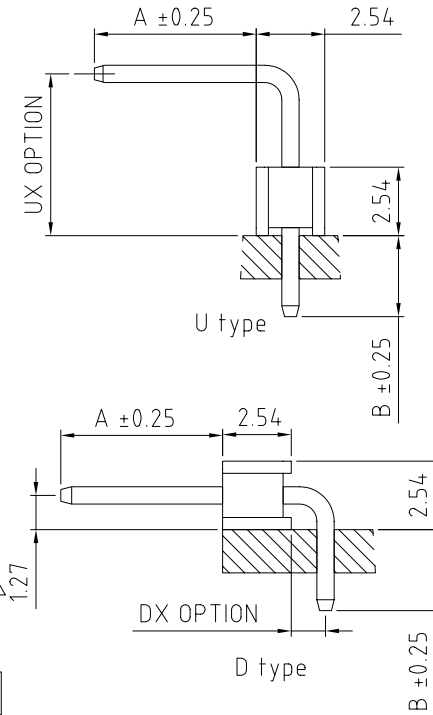
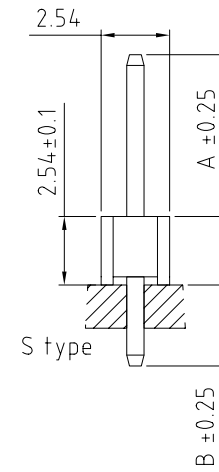
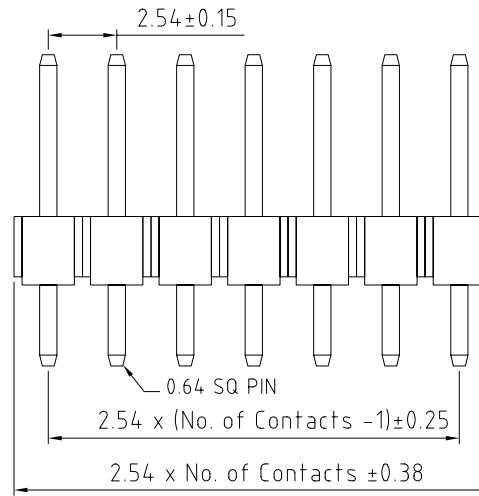
BB02-HA :- 2.54mm ( 0.1") PIN HEADER,SINGLE ROW, THROUGH HOLE 02 TO 40 CONTACTS

SPECIFICATIONS

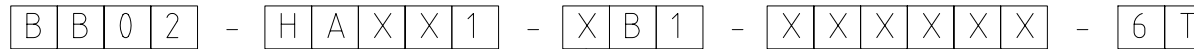
CURRENT RATING 3 AMP  
 INSULATOR RESISTANCE 1000 MEGOHMS MIN.  
 DIELECTRIC WITHSTANDING AC 600 V  
 OPERATING TEMPERATURE -40°C TO 105°C  
 CONTACT MATERIAL BRASS  
 INSULATOR MATERIAL THERMOPLASTIC, UL 94V-0  
 NYLON 6T : STANDARD  
 PBT : SPECIAL OPTION  
 PLATING GOLD, TIN OR SELECTIVE OVER 30-50U" NICKEL  
 SOLDERABILITY: NYLON 6T - IR REFLOW: 260°C FOR 10 SEC  
 WAVE: 230°C FOR 5-10 SEC  
 MANNUAL SOLDER: 350°C FOR 3-5 SEC  
 PBT - MANNUAL SOLDER: 330°C FOR 3-5 SEC  
 (NOT SUITABLE FOR HI-TEMP PROCESS)

PACKED LOOSE IN BAG. OR BOX.

MATES WITH :- BB02-JB BB02-JL  
 BB02-JC BB02-JR  
 BB02-JD BB02-JS  
 BB02-JE BB02-JT  
 BB02-JF BB02-KR  
 BB02-JG  
 BB02-JJ



HOW TO ORDER



NO. OF CONTACTS  
02 TO 40

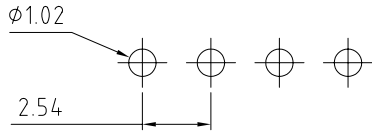
CONTACT PLATING OPTIONS  
 K = GOLD FLASH (STANDARD)  
 A = 10U" GOLD ON CONTACT/GOLD FLASH ON TAIL  
 B = 15U" GOLD ON CONTACT/GOLD FLASH ON TAIL  
 C = 30U" GOLD ON CONTACT/GOLD FLASH ON TAIL  
 T = BRIGHT TIN  
 M = MATT TIN  
 D = GOLD FLASH ON CONTACT/BRIGHT TIN ON TAIL  
 E = 10U" GOLD ON CONTACT/BRIGHT TIN ON TAIL  
 F = 15U" GOLD ON CONTACT/BRIGHT TIN ON TAIL  
 G = 30U" GOLD ON CONTACT/BRIGHT TIN ON TAIL

PIN LENGTH A (1/10mm)  
 PLEASE SPECIFY PIN LENGTH REQUIRED  
 I.E. 2.5mm = 25  
 STANDARD = 60

PIN LENGTH B (1/10mm)  
 PLEASE SPECIFY PIN LENGTH REQUIRED  
 I.E. 2.5mm = 25  
 STANDARD = 30

CONNECTOR TYPE  
 S0 = STRAIGHT  
 U1 = UP ANGLE 4.8mm  
 U2 = UP ANGLE 6.0mm  
 U3 = UP ANGLE 6.6mm  
 U4 = UP ANGLE 2.86mm  
 U5 = UP ANGLE 3.3mm  
 U6 = UP ANGLE 8.5mm  
 D1 = DOWN ANGLE 1.5mm  
 D2 = DOWN ANGLE 2.0mm  
 D3 = DOWN ANGLE 0.32mm  
 D4 = DOWN ANGLE 1.0mm

INSULATOR MATERIAL  
 6T = NYLON 6T (STANDARD)  
 BLANK = PBT (Not suitable for new designs.)



RECOMMENDED PCB HOLE LAYOUT  
 (TOLERANCE: ±0.05)

REV.	DATE & DRN.
10	29/06/02 - SJT - NEW
11	03/02/04 - NJR
12	23/08/04 - NYW
13	25/07/05 - NYW
14	14/08/06 - NYW
15	25/02/08 - NYW
16	29/08/08 - NYW
17	06/02/09 - CHC
18	19/06/09 - NYW
19	ADD US OPTION

Scale:	5:1	THIRD ANGLE	Unstated Tolerances: X ± 0.30 .X ± 0.25 .XX ± 0.15 .XXX ± 0.10	Material	SEE NOTE
Drawn:	CHC			App'd:	XXXX
Date:	19 JUN '09	Title	PIN HEADER	Unit:	mm
		Revision:	1.8		NOT TO SCALE

www.gradconn.com

THIS DRAWING IS CONFIDENTIAL AND MUST NOT BE COPIED OR DISCLOSED WITHOUT WRITTEN CONSENT

Type:	BB02-HA
Drawing Number:	BB02-HA
Sheet	1 of 1
Drawing	E and O E