

BB02-YM

CUSTOMER PRODUCT SPECIFICATION SHEET



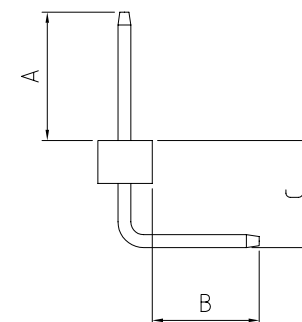
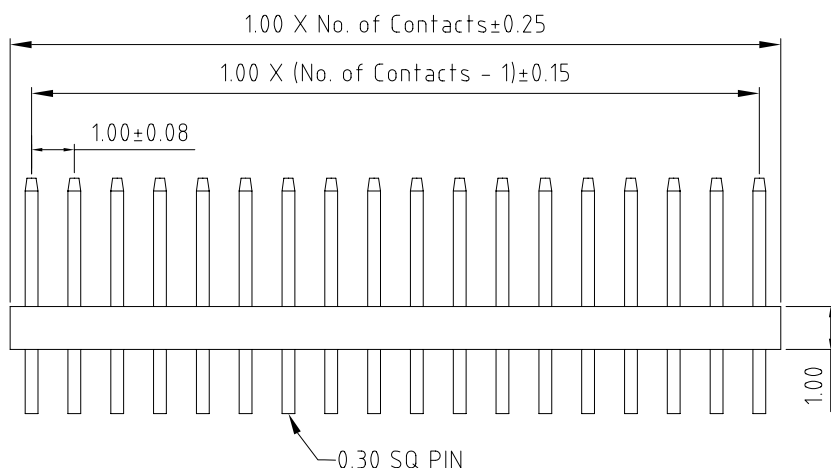
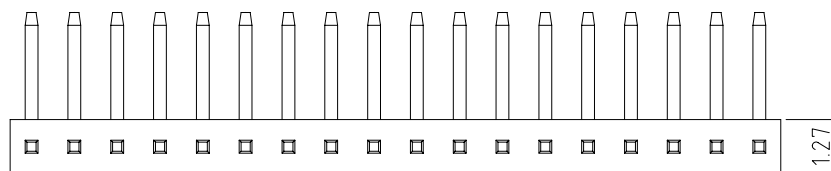
BB02-YM:- 1.00MM (0.039") PIN HEADER, SINGLE ROW, RIGHT ANGLE, THROUGH HOLE TYPE, 04 TO 40 CONTACTS

SPECIFICATIONS

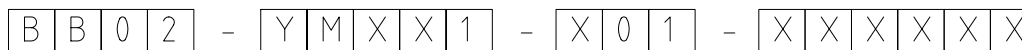
CURRENT RATING: 1AMP  
 INSULATOR RESISTANCE: 500 MEGOHMS MIN.  
 DIELECTRIC WITHSTANDING: AC 600 V  
 CONTACT RESISTANCE: 20m OHMS MAX.  
 OPERATING TEMPERATURE: -40°C TO +105°C  
 CONTACT MATERIAL: BRASS  
 INSULATOR MATERIAL: POLYESTER UL 94V-0  
 STANDARD: LCP  
 PLATING: GOLD FLASH OR TIN OVER 30-50U" NICKEL  
 SOLDERABILITY IR REFLOW: 280°C FOR 10 SEC  
 WAVE: 250°C FOR 5-10 SEC  
 MANUAL SOLDER: 380°C FOR 3-5 SEC

PACKAGING: LOOSE IN BOX.

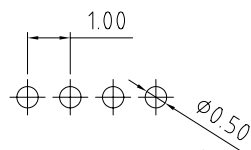
MATES WITH: - BB02-WD  
 BB02-WE  
 BB02-WF



HOW TO ORDER



<p>NO. OF CONTACTS 04 to 40</p>	<p>CONTACT PLATING OPTIONS K = GOLD FLASH (STANDARD) T = BRIGHT TIN M = MATT TIN</p>	<p>PIN LENGTH A (1/10mm) PLEASE SPECIFY PIN LENGTH REQUIRED I.E. 2.5mm = 25 TOL. ±0.25mm STANDARD = 15</p>	<p>PIN LENGTH B (1/10mm) PLEASE SPECIFY PIN LENGTH REQUIRED I.E. 2.5mm = 25 TOL. ±0.25mm STANDARD = 25</p>	<p>PIN LENGTH C (1/10mm) PLEASE SPECIFY PIN LENGTH REQUIRED I.E. 2.5mm = 25 TOL. ±0.25mm STANDARD = 25</p>
-------------------------------------	--	--	--	--



(TOLERANCE: ±0.05)  
RECOMMENDED PCB HOLE LAYOUT

REV. DATE & DRN  
 1.0 20/02/09 - NYW RELEASE  
 1.1 19/06/09 - NYW AMEND STANDARD A = 15.

Scale: 8:1	THIRD ANGLE	Unstated Tolerances: X ± 0.30 X ± 0.25 .XX ± 0.15 .XXX ± 0.10	Material SEE NOTE	 www.gradconn.com	Type BB02-YM
Drawn: NYW					BB02-YM
App'd: XXX	Title: PIN HEADER		NOT TO SCALE		Drawing Number:
Date: 19 JUN '09	Revision: 1.1		Unit: mm		Sheet 1 of 1
				© THIS DRAWING IS CONFIDENTIAL AND MUST NOT BE COPIED OR DISCLOSED WITHOUT WRITTEN CONSENT	Drawing © E and O E