

BB02-WE:- 1.00MM (0.039") SOCKET, SINGLE ROW, STRAIGHT, SMT TYPE, 02 TO 40 CONTACTS, DUAL ENTRY

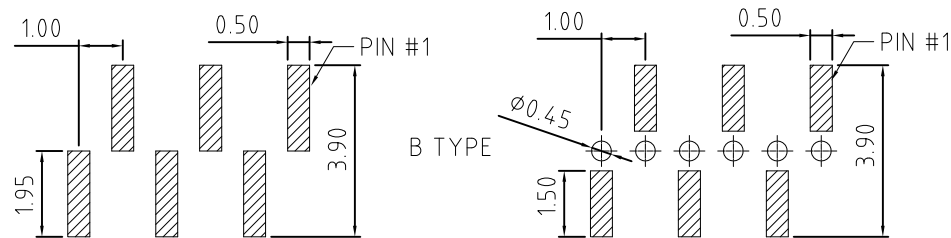
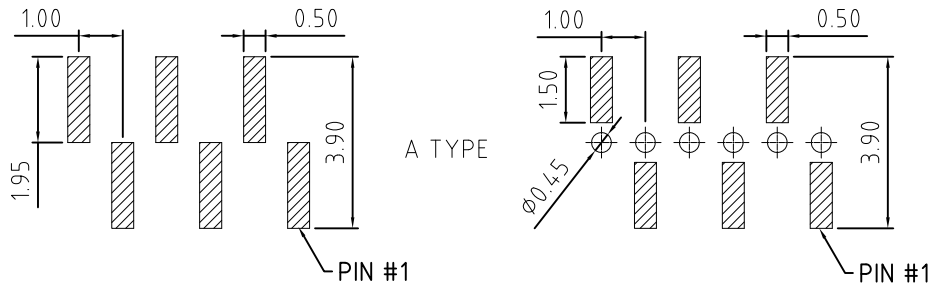
SPECIFICATIONS :

- CURRENT RATING: 1.0AMP
- INSULATOR RESISTANCE: 1000 MEGOHMS MIN.
- DIELECTRIC WITHSTANDING: AC 300 V
- CONTACT RESISTANCE: 20m OHMS MAX.
- OPERATING TEMPERATURE: -40°C TO +105°C
- CONTACT MATERIAL: PHOSPHOR BRONZE
- INSULATOR MATERIAL: THERMOPLASTIC, UL 94V-0  
STANDARD: LCP+30%GF
- PLATING: GOLD OR TIN OVER 30-50U" NICKEL
- SOLDERABILITY IR REFLOW: 280°C FOR 10 SEC  
MANUAL SOLDER: 380°C FOR 3-5 SEC

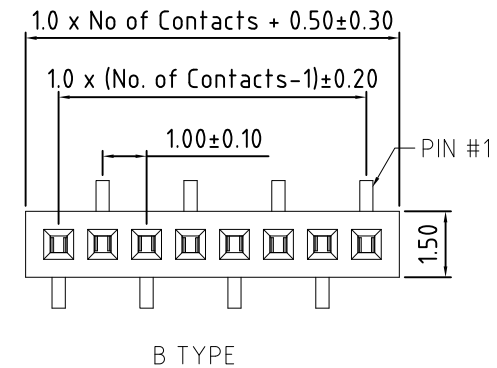
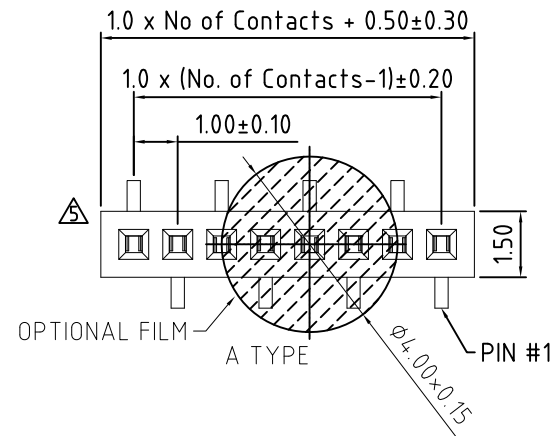
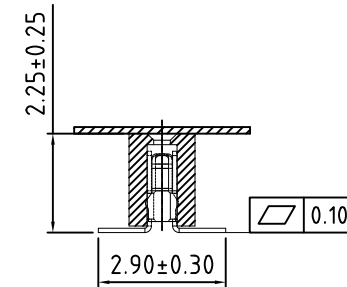
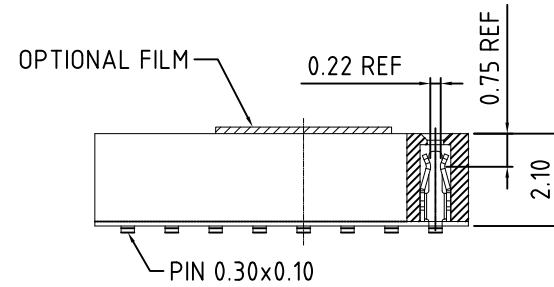
NOTES:

- 1. RECOMMENDED MATING PIN LENGTH FOR TOP ENTRY: 1.5MM-1.8MM.

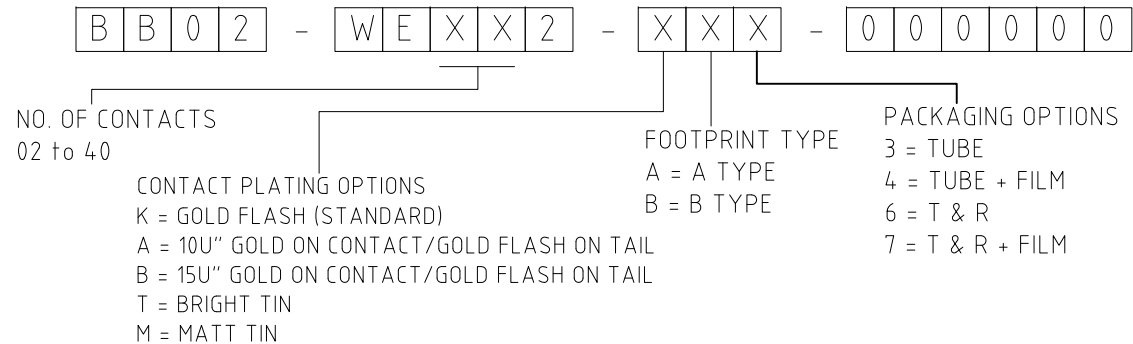
MATES WITH: - BB02-YJ BB02-YL BB02-YN  
BB02-YK BB02-YM



TOP ENTRY TYPE (TOLERANCE: ±0.05) BOTTOM ENTRY TYPE  
RECOMMENDED PCB LAYOUT



HOW TO ORDER



REV.	DATE & DRN	RELEASE
10	17/06/08-NYW	11 25/12/08-NYW
11	03/07/09-NYW	12 03/07/09-NYW
12	29/12/09-NYW	13 29/12/09-NYW
13	04/06/10-NYW	14 04/06/10-NYW
14	21/12/10-CHC	15 21/12/10-CHC

Scale:	8:1
Drawn:	NYW
App'd:	XXX
Date:	21 DEC '10

THIRD ANGLE	
Title:	SOCKET
Revision:	15

Unstated Tolerances:	X ± 0.30
	XX ± 0.25
	XXX ± 0.15
	XXXX ± 0.10

Material	SEE NOTE
Unit:	mm

© THIS DRAWING IS CONFIDENTIAL AND MUST NOT BE COPIED OR DISCLOSED WITHOUT WRITTEN CONSENT

Type	BB02-WE
Drawing Number:	BB02-WE
Sheet	1 of 1
Drawing	© E and O E