

BB02-BL :- 1.27mm (0.05") PIN HEADER, SINGLE ROW, STRAIGHT, THROUGH HOLE - 02 TO 50 CONTACTS

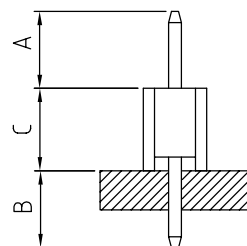
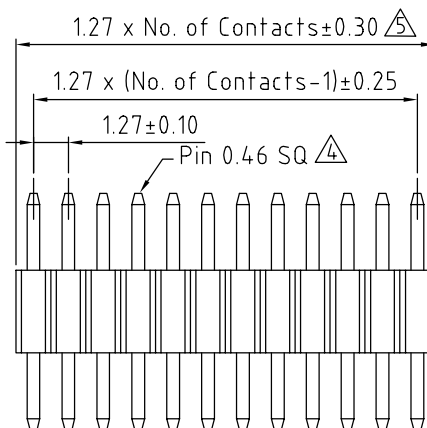
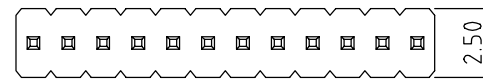
SPECIFICATIONS

CURRENT RATING 1 AMP
 INSULATOR RESISTANCE 1000 MEGOHMS MIN.
 DIELECTRIC WITHSTANDING AC 300 V
 OPERATING TEMPERATURE -40°C TO +105°C
 CONTACT MATERIAL BRASS
 INSULATOR MATERIAL THERMO PLASTIC, UL 94V-0
 STANDARD LCP Δ
 PLATING GOLD, TIN, OR SELECTIVE OVER 30~50U" NICKEL
 SOLDERABILITY IR REFLOW: 280°C FOR 10 SEC
 WAVE: 250°C FOR 5-10 SEC
 MANUAL SOLDER: 380°C FOR 3-5 SEC

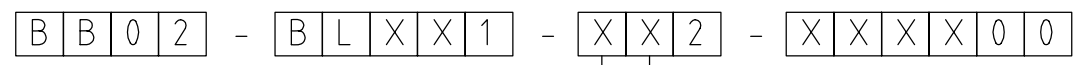
PACKED IN BOX Δ Δ

NOTE
 SELECTIVE PLATING: GOLD PLATED ON CONTACT, TIN ON SOLDER AREA

MATES WITH: - BB02-CE BB02-NP
 BB02-CF
 BB02-NU



HOW TO ORDER



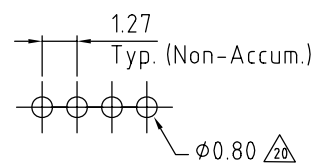
NO. OF CONTACTS
 Δ 02 TO 50

CONTACT PLATING OPTIONS
 K = GOLD FLASH (STANDARD)
 A = 10U" GOLD ON CONTACT/GOLD FLASH ON TAIL
 B = 15U" GOLD ON CONTACT/GOLD FLASH ON TAIL
 C = 30U" GOLD ON CONTACT/GOLD FLASH ON TAIL
 T = BRIGHT TIN
 M = MATT TIN
 D = GOLD FLASH ON CONTACT/BRIGHT TIN ON TAIL
 E = 10U" GOLD ON CONTACT/BRIGHT TIN ON TAIL
 F = 15U" GOLD ON CONTACT/BRIGHT TIN ON TAIL
 G = 30U" GOLD ON CONTACT/BRIGHT TIN ON TAIL

HEIGHT 'C'
 A = 2.54mm
 B = 3.0mm
 C = 1.7mm
 Δ

DIMENSION A (1/10mm)
 28 TO SUIT BB02-CF
 60 TO SUIT BB02-CE
 PLEASE SPECIFY PIN LENGTH REQUIRED
 I.E. 2.5mm = 25
 TOL = ±0.25mm

DIMENSION B (1/10mm)
 26 TO SUIT BB02-CE
 26 TO SUIT BB02-CF
 PLEASE SPECIFY PIN LENGTH REQUIRED
 I.E. 2.5mm = 25
 TOL = ±0.25mm



RECOMMENDED PC BOARD HOLE LAYOUT
 (TOLERANCE: ±0.05)

REV.	DATE & DRN
11	28/07/04 - NYW
12	10/02/05 - NYW
13	12/08/05 - CHC
14	19/09/05 - NYW
15	02/11/05 - NYW
16	17/07/06 - NYW
17	20/02/08 - NYW
18	30/12/08 - CHC
19	02/10/09 - NYW
20	09/03/11 - NYW

Scale:	5:1
Drawn:	CHC
App'd:	XXX
Date:	9 MAR '11

THIRD ANGLE	
Title	PIN HEADER
Revision:	2.0

Unstated Tolerances:	X ± 0.30 X ± 0.25 XX ± 0.15 XXX ± 0.10
Material	SEE NOTE
	NOT TO SCALE
Unit	mm

Type:	BB02-BL
Drawing Number:	BB02-BL
Sheet	1 of 1
Drawing	© E and O E

THIS DRAWING IS CONFIDENTIAL AND MUST NOT BE COPIED OR DISCLOSED WITHOUT WRITTEN CONSENT