

BB02-AK - 0.8mm (0.0315") BOARD STACKER FEMALE RIGHT ANGLE SMT TYPE 10 TO 68 CONTACTS

SPECIFICATIONS

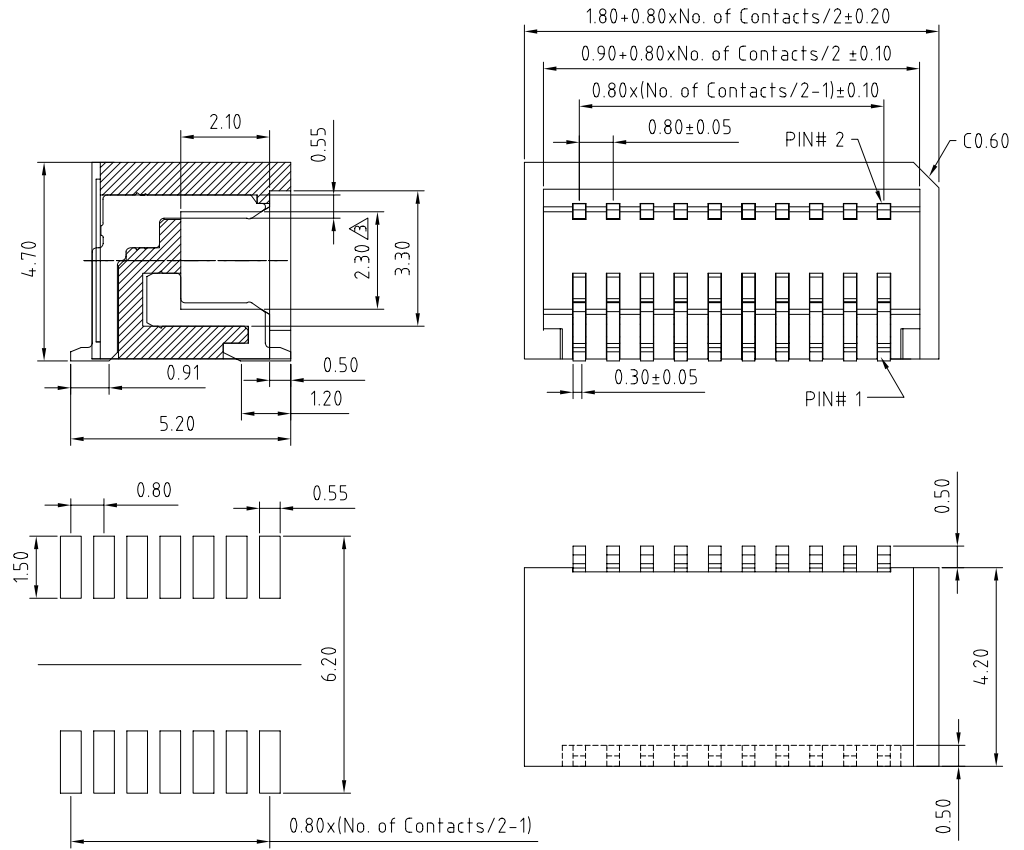
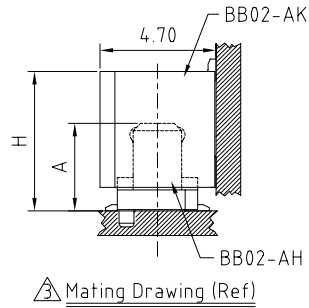
CURRENT RATING	0.5 AMP
INSULATOR RESISTANCE	100 MEGOHMS MIN AT 250V DC
CONTACT RESISTANCE	40m OHM MAX $\Delta$
DIELECTRIC WITHSTANDING	AC 500V(r.ms.) AT 0.5mA FOR 1 MIN.
OPERATING TEMPERATURE	-40°C TO +105°C
CONTACT MATERIAL	PHOSPHOR BRONZE
INSULATOR MATERIAL	THERMOPLASTIC UL94V-0 STANDARD: NYLON 46
MAX. PROCESSING TEMP	260°C FOR 5-10 SEC $\Delta$
PLATING	GOLD FLASH ALL OVER 30~50U" NICKEL
MATING CYCLE	500 TIMES MIN $\Delta$

MATING PARTS AND MATING HEIGHT: -

P/N (PLUG)	P/N (SOCKET)	PLUG HEIGHT A	MATING HEIGHT H
AHXX1-KAX	AKXX2-K0X	3.55MM	5.65MM
AHXX1-KBX	AKXX2-K0X	4.05MM	6.15MM

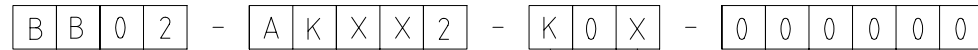
NOTES:

- $\Delta$ 1. MOQ: TUBE - 5,000PCS, REEL - FULL REEL QTY > 5,000PCS.
- $\Delta$ 2. OTHER EVEN NUMBER CIRCUIT SIZES ARE POSSIBLE, UPTO A MAXIMUM OF 100 CONTACTS, BUT ARE NOT TOOLED AT THIS TIME. PLEASE CONTACT GRADCONN FOR DETAILS.



RECOMMENDED PC BOARD LAYOUT

HOW TO ORDER



$\Delta$  NO OF CONTACTS  
10, 14, 16, 20, 24, 28  
30, 32, 36, 50, 68  
(SEE NOTES 2)

CONTACT PLATING  
K = GOLD FLASH  
(STANDARD)

PACKAGING  
OPTIONS  
3 - TUBE  
6 - T & R  
STANDARD = 3

REV. DATE & DRN	10 07/07/05 - NYW RELEASE
	11 31/10/06 - NYW
	$\Delta$ AMEND MAX. PROCESSING TEMP 250C TO 260C.
	12 22/06/07 - NYW
	$\Delta$ ADD MATING CYCLE.
	13 07/07/07 - NYW
	$\Delta$ AMEND CONTACT RESISTANCE AND MATING DRAWING.
	14 22/04/08 - NYW
	$\Delta$ AMEND CONTACT RESISTANCE.
	15 19/05/08 - NYW
	$\Delta$ ADD NOTES 1.
	16 07/07/08 - CHC
	$\Delta$ ADD TOLERANCE.
	17 31/07/08 - NYW
	$\Delta$ ADD SUGGESTED MATING ANGLES.
	18 25/09/08 - NYW
	$\Delta$ AMEND NO. OF CONTACTS.
	19 07/07/08 - NYW
	$\Delta$ ADD NOTES 2.
	20 07/07/08 - NYW
	$\Delta$ REVISE MATING SPECIFICATION AND MATING DRAWING.
	21 07/07/08 - NYW
	$\Delta$ ADD PCB CLEARANCE DIAGRAM.

Scale 8:1	THIRD ANGLE	General Tolerances $\Delta$ X ±0.20 XX ±0.15	Material SEE NOTE	 www.gradconn.com THIS DRAWING IS CONFIDENTIAL AND MUST NOT BE COPIED OR DISCLOSED WITHOUT WRITTEN CONSENT	Type BB02-AK
Drawn CHC			NOT TO SCALE		BB02-AK
App'd XXX	Title SOCKET				Drawing Number
Date 8 OCT '08	Revision: 1.9		Unit: mm		Sheet 1 of 1
					Drawing $\Delta$ E and OE