

BB02-HY:- 2.54MM (0.1") PIN HEADER, SINGLE ROW, STRAIGHT, SMT TYPE, 2 TO 40 CONTACTS

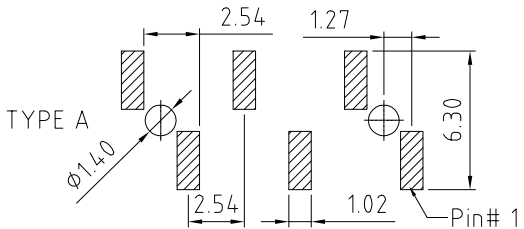
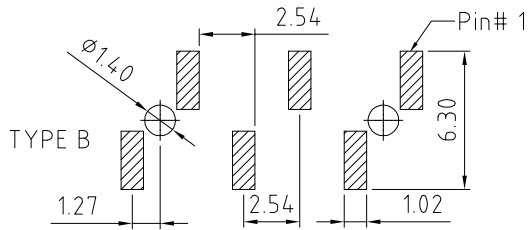
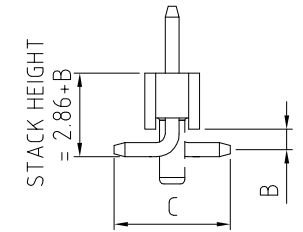
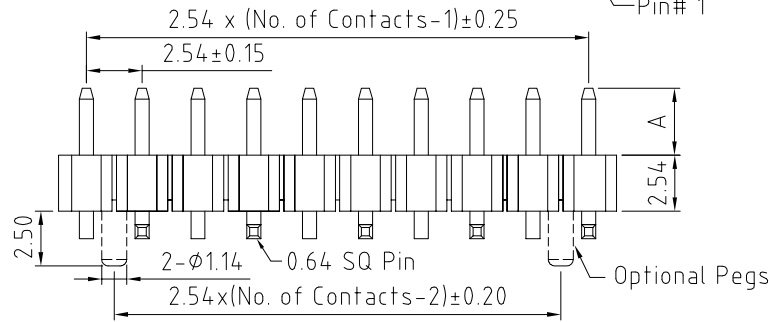
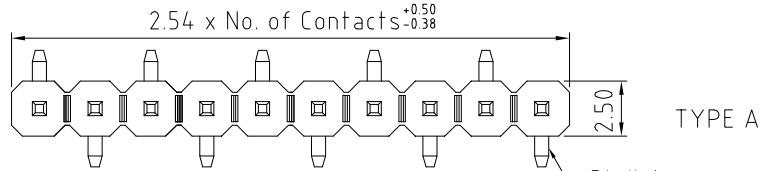
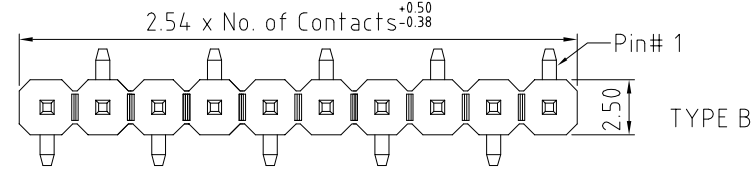
SPECIFICATIONS

CURRENT RATING	3 AMP
INSULATOR RESISTANCE	1000 MEGOHMS MIN.
CONTACT RESISTANCE	20 MILLIOHMS MAX
DIELECTRIC WITHSTANDING	AC 600 V
OPERATING TEMPERATURE	-40°C TO +105°C
CONTACT MATERIAL	BRASS
INSULATOR MATERIAL	THERMOPLASTIC, UL 94V-0 STANDARD : NYLON-6T
PLATING	GOLD, TIN, OR SELECTIVE OVER 30-50U" NICKEL
SOLDERABILITY	IR REFLOW: 260°C FOR 10 SEC MANUAL SOLDER: 350°C FOR 3-5 SEC

MATES WITH: -

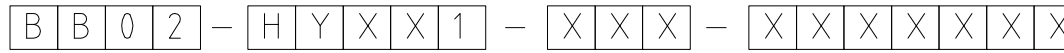
BB02-JB	BB02-JJ	BB02-JU
BB02-JC	BB02-JL	BB02-KR
BB02-JE	BB02-JR	
BB02-JF	BB02-JS	
BB02-JG	BB02-JT	

NOTES:
1. MAX. NUMBER OF CONTACTS ALLOWED FOR TAPE & REEL PACKAGING:
32 CONTACTS.



RECOMMENDED PCB LAYOUT
(TOLERANCE: ±0.05)

HOW TO ORDER



NO. OF CONTACTS:
02 TO 40 (W/O PEGS)
04 TO 40 (WITH PEGS)

CONNECTOR TYPE:
A = A TYPE
B = B TYPE

CONTACT PLATING OPTIONS:
K = GOLD FLASH (STANDARD)
A = 10U" GOLD ON CONTACT/GOLD FLASH ON TAIL
B = 15U" GOLD ON CONTACT/GOLD FLASH ON TAIL
C = 30U" GOLD ON CONTACT/GOLD FLASH ON TAIL
T = BRIGHT TIN
M = MATT TIN
D = GOLD FLASH ON CONTACT/BRIGHT TIN ON TAIL
E = 10U" GOLD ON CONTACT/BRIGHT TIN ON TAIL
F = 15U" GOLD ON CONTACT/BRIGHT TIN ON TAIL
G = 30U" GOLD ON CONTACT/BRIGHT TIN ON TAIL

PACKAGING OPTIONS:
2 = BOX
3 = TUBE
5 = TUBE + CAP
6 = TAPE & REEL (see note 1)
8 = TAPE & REEL + CAP (see note 1)

PIN LENGTH A (1/10mm)
PLEASE SPECIFY PIN LENGTH REQUIRED
I.E. 2.5mm = 25
STANDARD = 58
TOL.: ±0.25MM

PIN LENGTH B (1/10mm)
PLEASE SPECIFY PIN LENGTH REQUIRED
I.E. 2.5mm = 25
STANDARD = 13
MINIMUM = 05
TOL.: ±0.25MM

LOCATING PEG OPTIONS:
A = WITH PEGS
BLANK = WITHOUT PEGS

PIN LENGTH C (1/10mm)
PLEASE SPECIFY PIN LENGTH REQUIRED
I.E. 5.0mm = 50
MINIMUM = 48
STANDARD = 51
TOL.: ±0.3MM

REV.	DATE	BY	DESCRIPTION
10	16/07/06	NJR	RELEASE
11	22/05/06	NYW	AMEND PACK OPTIONS.
12	26/07/06	NYW	AMEND PCB LAYOUT.
13	15/07/08	CHC	DRAWING MODIFICATION.
14	ADD MIN. DIMENSION OF B.		
15	20/01/09	NYW	PLATING MODIFICATION.
16	26/09/13	NYW	DRAWING MODIFICATION.
17	23/07/13	NYW	ADD MIN. TO DIMENSION C.
18	ADD MOTE.		
19	20/11/19	NYW	ADD PEGS OPTIONS.
			AMEND MIN. C LENGTH TO 4.8MM

Scale:	4:1	THIRD ANGLE	Unstated Tolerances: X ± 0.30 X ± 0.25 XX ± 0.15 XXX ± 0.10	Material	SEE NOTE
Drawn:	NJR				
App'd:	XXXX	Title	PIN HEADER		NOT TO SCALE
Date:	20 NOV. '19	Revision:	19	Unit:	mm

www.gradconn.com

THIS DRAWING IS CONFIDENTIAL AND MUST NOT BE COPIED OR DISCLOSED WITHOUT WRITTEN CONSENT

Type:	BB02-HY
Drawing Number:	BB02-HY
Sheet	1 of 1
Drawing	© E and O E